







29 Sawmill Mews

Tapton • Chesterfield • S41 7WD

Guide Price £250,000 to £260,000

Offered with no upward chain is this modern three-bedroom mid-terraced home located within a well-regarded development in the desirable Tapton area of Chesterfield. The property benefits from excellent accessibility, with Chesterfield town centre and train station within easy reach, along with nearby commuter routes serving the surrounding areas. The location is particularly popular due to its strong local schools, range of amenities including shops and cafés, and close proximity to green spaces and countryside walks, with Tapton Golf Course nearby. The property would make an ideal purchase for first-time buyers, couples, or families alike. The front door opens into the kitchen diner, which is fitted with modern units and integrated appliances, and offers space for a small dining table. A door from the kitchen provides access to the downstairs WC. The kitchen then opens through to the living room, a well-proportioned space featuring bi-fold doors that lead directly out to the rear garden, allowing for plenty of natural light. To the first floor, the principal bedroom is front facing and benefits from sliding fitted wardrobes, along with a well-appointed tiled en-suite comprising a walk-in shower, wash basin and WC. The second bedroom is also a front-facing double, again with sliding fitted wardrobes. The third bedroom is a well-proportioned single overlooking the rear of the property and includes a useful storage cupboard. The family bathroom is fully tiled and fitted with a three-piece suite including a bath with overhead shower, wash basin and WC. Externally, the rear garden is enclosed and designed for ease of maintenance. It begins with a patio seating area, followed by two decked areas positioned along the side of the garden, with a lawned section in the centre. To the front, the property benefits from an attached garage to the side along with off-street parking.





- Modern Three Bedroom Mid-Terraced House
- Offered with No Upward Chain
- Nearby Commuter Routes & Chesterfield Town Centre
- Modern Kitchen Diner w/ Integrated Appliances
- Spacious Living Room w/ Bifold Doors onto

Rear Garden

- Three Well Proportioned Bedrooms
- Modern Tiled Bathroom & Ensuite
- Enclosed Rear Garden w/ Patio & Decking
- Attached Garage & Off Street Parking
- Council Tax Band B/EPC Rating B

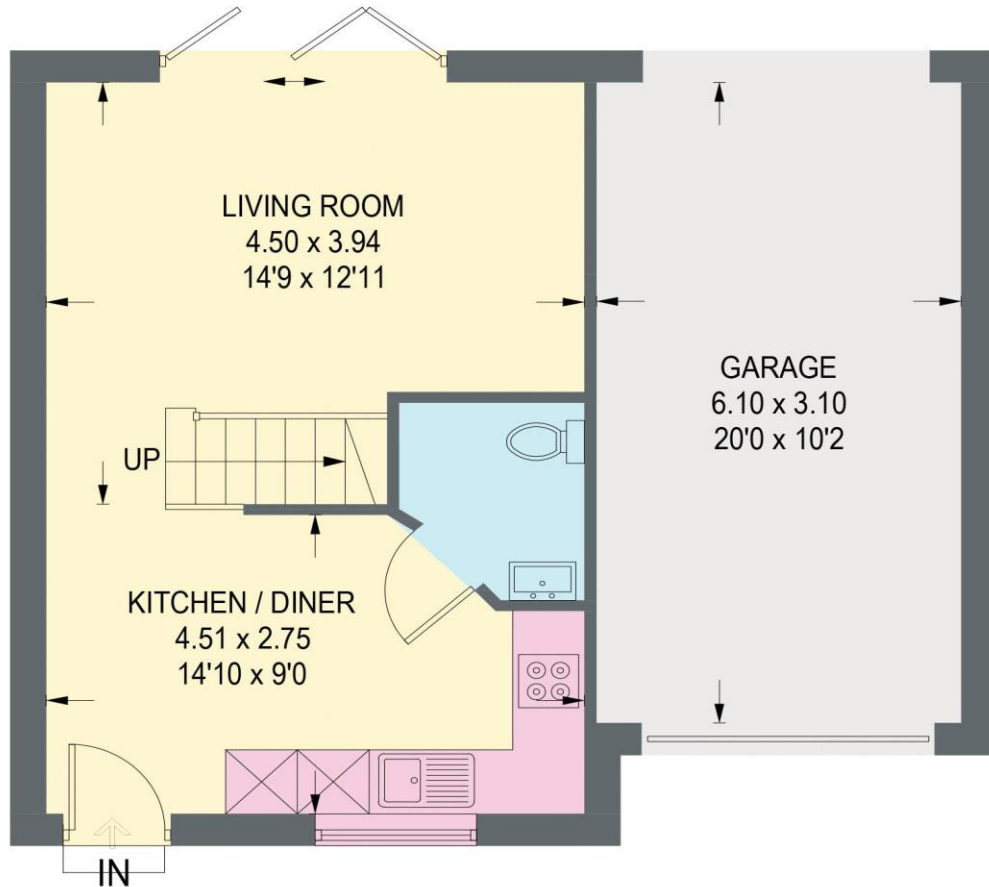




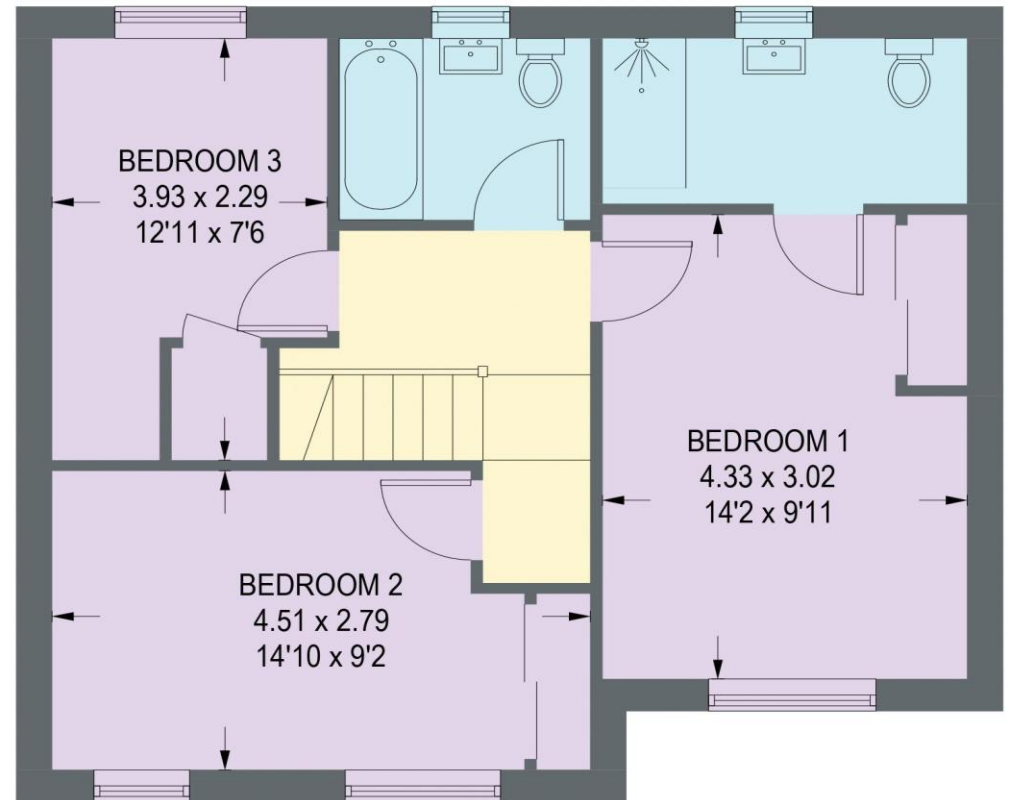
SITA
SITA
SITA

29 SAWMILL MEWS

APPROXIMATE GROSS INTERNAL AREA = 99.4 SQ M / 1069.6 SQ FT



GROUND FLOOR (INCLUDING GARAGE)
50.1 SQ M / 539.0 SQ FT



FIRST FLOOR = 49.3 SQ M / 530.6 SQ FT

Illustration for identification purposes only, measurements are approximate, not to scale. (ID1292576)



haus

31 West Bars, Chesterfield, S40 1AG
chesterfield@haushomes.co.uk haushomes.co.uk

01246 380 535