



Times Square, E1 £375,000

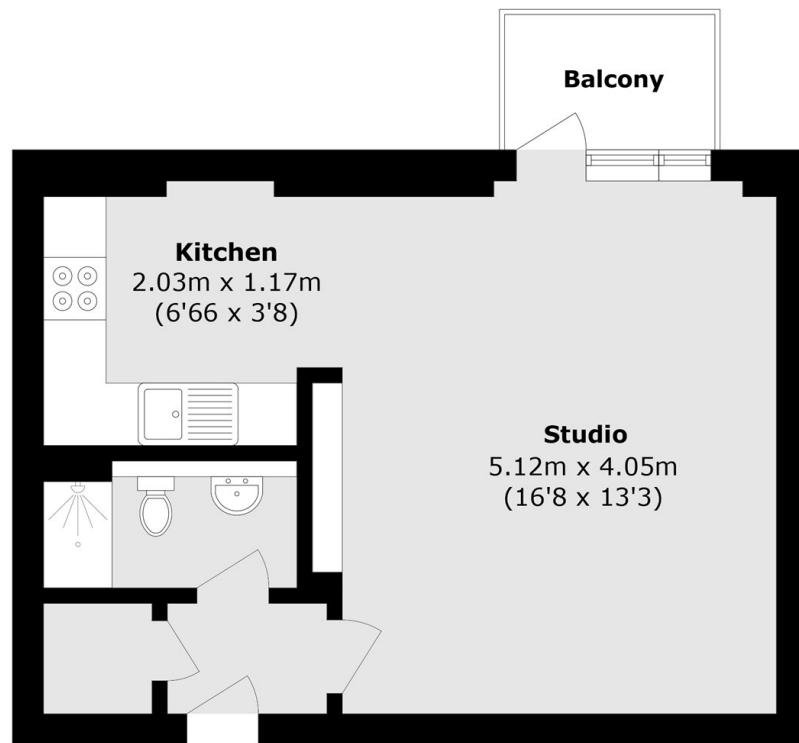
A studio apartment located in a popular development on the edge of the City of London. This property offers a spacious, semi-open plan reception/kitchen with floor-to-ceiling doors leading onto the private balcony overlooking a well-maintained courtyard with impressive water feature. This area has the smartly designed pull down bed feature which turns living space into bedroom space in moments. The development has its own concierge and 24/7 security.

This central location provides great transport links throughout London and is a short walk from The City. The property is in close proximity to Algate East (Hammersmith & City, District), Aldgate (Circle, Metropolitan), Liverpool Street (Underground, Overground and Mainline) and Shadwell (Windrush, DLR). The local area offers fantastic amenities including several bars, cafes, restaurants, gyms and a luxury cinema.

Features

- Studio apartment
- Private Balcony with views
- Semi-separate Kitchen
- Built In Storage
- Great Transport Links
- Modern Design

Times Square, London, E1



Total area (approx.): 36.0 sq. m (387.5 sq. ft)

Balcony area (approx.): 2.6 sq. m (27.9 sq. ft)