



HODSONS



ASKING PRICE

£650,000

Willow Beck

Wakefield, WF4 2QB

PROPERTY SUMMARY

A beautifully extended family home enjoying a pleasant cul-de-sac position in the highly regarded village of Notton. Offering versatile living space ideal for modern family life, the property features generous ground-floor accommodation, four well-proportioned bedrooms, a superb master suite, and attractive gardens to both front and rear, together with a driveway and integral double garage.

4



2



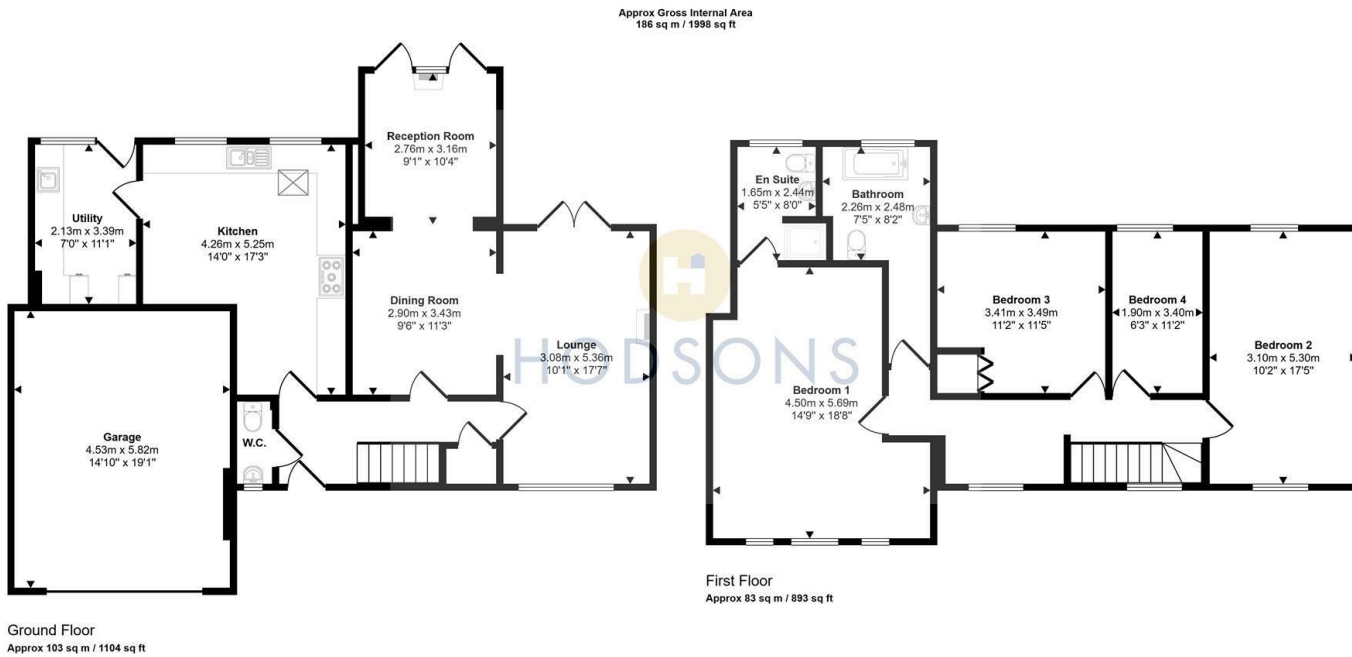
3











This floorplan is only for illustrative purposes and is not to scale. Measurements of rooms, doors, windows, and any items are approximate and no responsibility is taken for any error, omission or mis-statement. Icons of items such as bathroom suites are representations only and may not look like the real items. Made with Made Snappy 360.

LOCAL AUTHORITY

Wakefield

TENURE

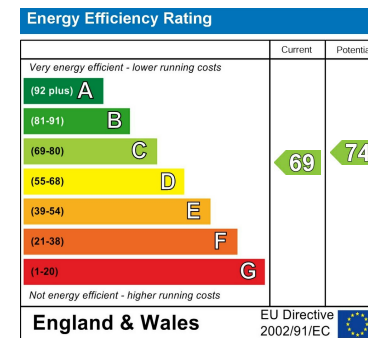
Freehold

COUNCIL TAX BAND

E

VIEWINGS

By prior appointment only



Agents Note: Whilst every care has been taken to prepare these particulars, they are for guidance purposes only. All measurements are approximate and are for general guidance purposes only and whilst every care has been taken to ensure their accuracy, they should not be relied upon and potential buyers/tenants are advised to recheck the measurements



OFFICE ADDRESS

37-39 George Street
 Wakefield
 West Yorkshire
 WF1 1LX

OFFICE DETAILS

01924 200544
 wakefield@hodsonsproperty.co.uk
 www.hodsonsproperty.co.uk