



Ground Floor Flat, 19 St. James Place West, The Hoe, Plymouth, Devon, PL1 3AT

£135,000



Nestled in a prime location between The Hoe and the city centre, this meticulously renovated one-bedroom ground-floor flat offers the perfect blend of modern living and historic charm. Situated within a beautifully converted house, this property enjoys an enviable position, just a short stroll from the vibrant hustle and bustle of The Barbican.

Upon entering, you are greeted by a welcoming entrance hall that leads into a spacious lounge, bathed in natural light from the large bay window. The lounge features an electric fireplace, providing a cozy ambiance for relaxing evenings.

The modern kitchen, finished to a high standard, boasts a range of sleek wall and base units, complemented by an electric hob, oven, and a sink with a drainer. Integrated appliances include a dishwasher and a fridge freezer, ensuring a seamless culinary experience.

To the rear of the property, you'll find the contemporary shower room, complete with a corner shower, wash hand basin, heated towel rail, and WC, offering both style and functionality.

The generously sized double bedroom is a tranquil retreat, featuring built-in wardrobes that provide ample storage space.

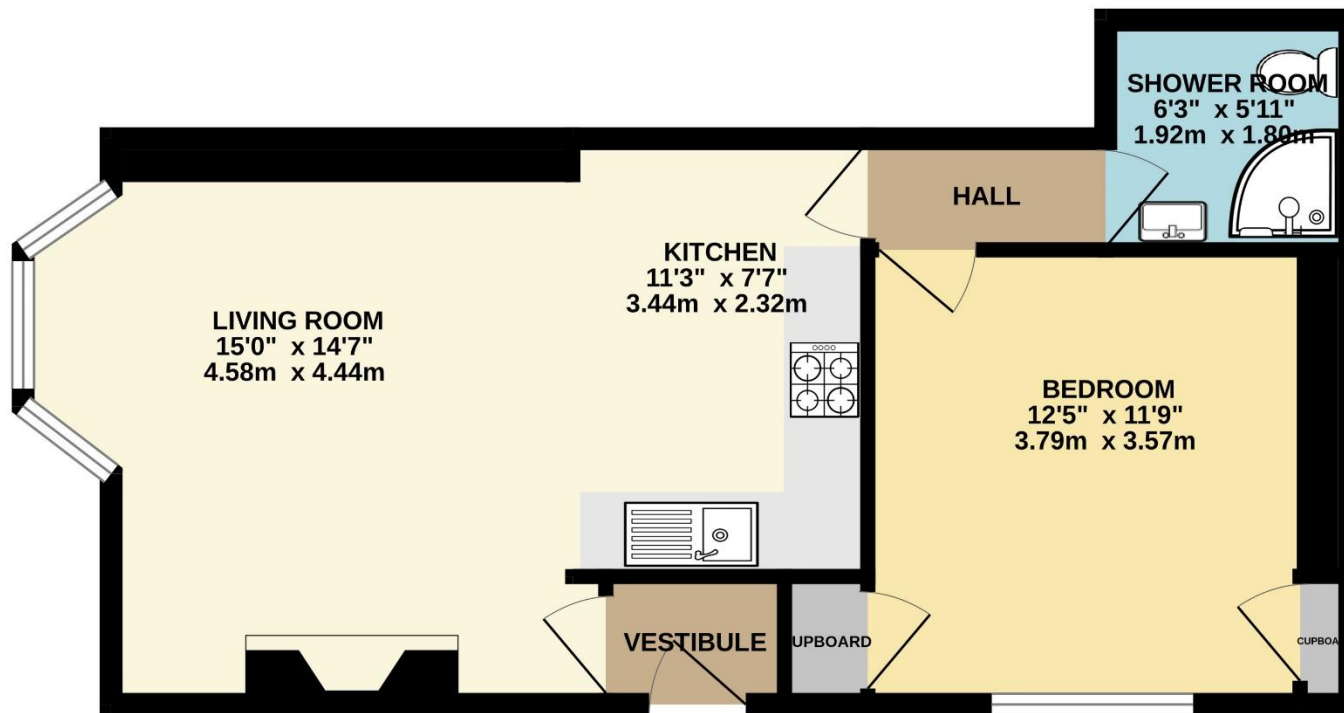
Offered to the market chain-free, this stunning flat is ideal for those seeking a modern, low-maintenance home in one of the city's most desirable locations. Don't miss the opportunity to make this exceptional property your own.

The Freehold is owned by a company called St James Place Freehold Ltd, jointly owned by the three flat owners within the building. The building is fully insured with Residential Landlord Insurance. The sale of the flat includes a one third share of the Freehold company. The above information is provided in good faith although we would recommend that prospective purchasers consult their own solicitor for formal verification.



To view this property call Lang Town & Country Estate Agents on [01752 200909](tel:01752 200909)





TOTAL FLOOR AREA : 497 sq.ft. (46.2 sq.m.) approx.

Whilst every attempt has been made to ensure the accuracy of the floorplan contained here, measurements of doors, windows, rooms and any other items are approximate and no responsibility is taken for any error, omission or mis-statement. This plan is for illustrative purposes only and should be used as such by any prospective purchaser. The services, systems and appliances shown have not been tested and no guarantee as to their operability or efficiency can be given.
Made with Metropix ©2024



Lang Town & Country
6 Mannamead Road
Plymouth
PL4 7AA
Tel: 01752 200909
Email: waterside@langtownandcountry.com
www.langtownandcountry.com

Lang Town & Country endeavour to ensure the accuracy of property details produced and displayed, we have not tested any apparatus, equipment, fixtures, fittings or services and so cannot verify that they are connected, in working order or fit for purpose. A buyer must check the availability of any property and make an appointment to view before embarking on any journey to see a property.

