



OVER 60?

Secure this property
for up to **59% less!**

Price

£795,000

Freehold

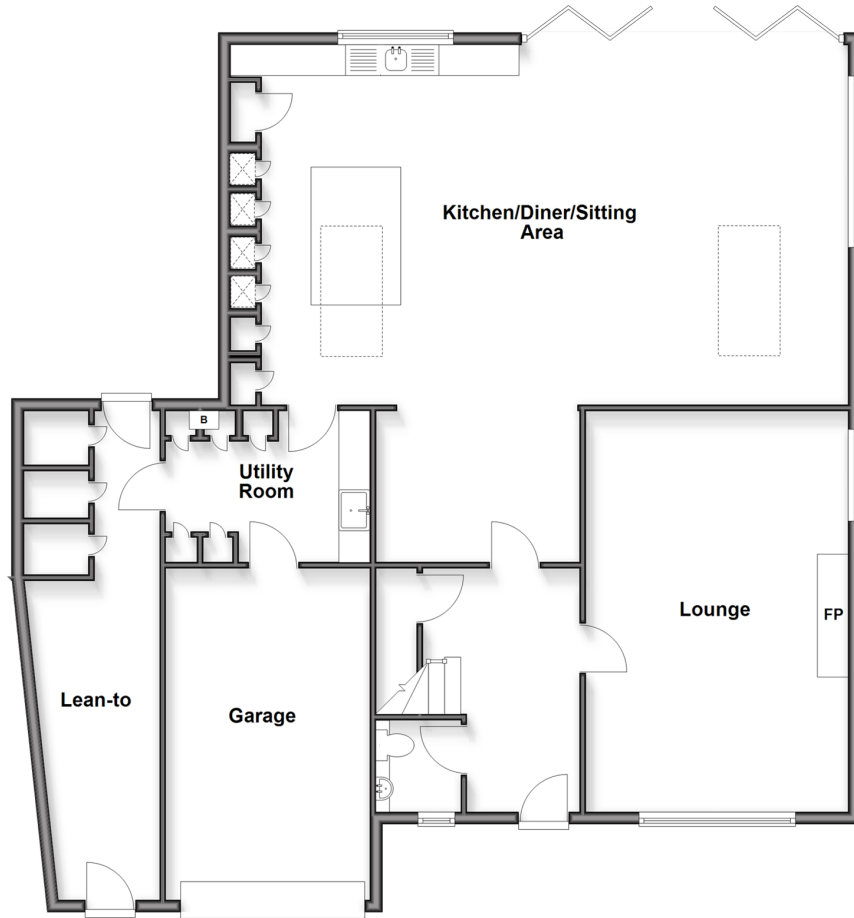
4x  2x  2x 

**Grimthorpe Avenue,
Whitstable, Kent, CT5**

Wards
Helping you move forwards

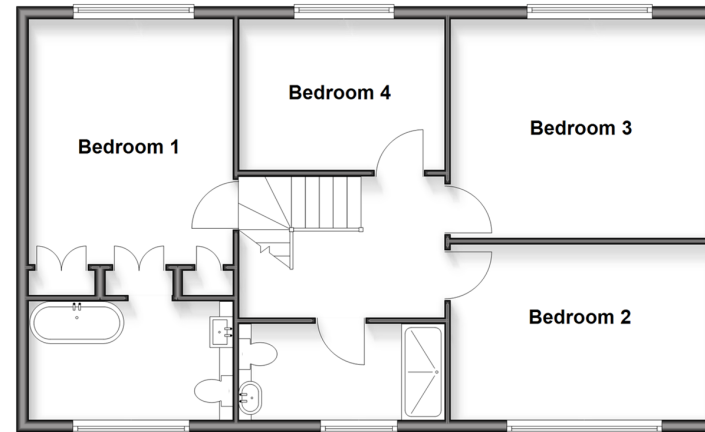
Ground Floor

Approx. 153.1 sq. metres (1647.8 sq. feet)



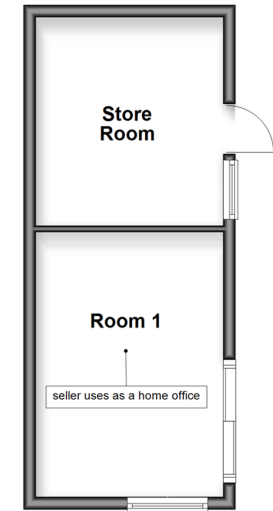
Split Level First Floor

Approx. 72.1 sq. metres (776.0 sq. feet)



Outbuilding

Approx. 23.7 sq. metres (255.4 sq. feet)



Accommodation

GROUND FLOOR

Entrance Hall
Cloakroom
Lounge: 22'6 x 13'11 (6.86m x 4.24m)
Kitchen Entrance: 10'10 x 9'11 (3.30m x 3.02m)
Kitchen/Diner/Sitting Area: 34'5 x 18'2 (10.50m x 5.54m)
Utility Room: 10'10 x 7'10 (3.30m x 2.39m)

FIRST FLOOR

Landing
Bedroom 1 : 14'1 x 10'11 (4.30m x 3.33m)
Ensuite Bathroom: 10'5 x 5'8 (3.18m x 1.73m)
Bedroom 2: 13'11 x 10'1 (4.24m x 3.08m)
Bedroom 3: 14'1 x 12'8 (4.30m x 3.86m)
Bedroom 4 : 11'2 x 9'6 (3.41m x 2.90m)
Shower Room : 11'2 x 4'11 (3.41m x 1.50m)

OUTBUILDING

Home Office: 13'4 x 9'8 (4.07m x 2.95m)
Store Room

OUTSIDE

Garage
Driveway
Lean-to
Rear Garden



Main features

- Impressive extended kitchen/diner/sitting room creating a superb open-plan living space
- Stunning sea views toward the Isle of Sheppey
- The perfect kitchen for a home cook, with a large island, multiple built-in appliances and a utility room
- Four generously sized bedrooms, with an en-suite to Bedroom 1
- Large outbuilding/home office and garage



Nearest Schools

Primary Schools: Joy Lane Primary 0.3 miles, Whitstable Junior School 0.8 miles, Whitstable and Seasalter Endowed C of E Junior School 0.9 miles

Secondary Schools: The Whitstable School 1.0 miles



Transport Information

Train Stations: Whitstable 1.2 miles, Chestfield & Swalecliffe 2.4 miles, Herne Bay 4.6 miles



Address

Grimthorpe Avenue, Whitstable, Kent, CT5



Directions

For directions to this property please contact us.



Call Whitstable Branch 01227 772272 ■ wardsofkent.co.uk



- Legal advice should be taken to verify fixtures/fittings, planning, alterations and/or lease details
- Appliances & services are untested, dimensions are approximate and floor plans are not to scale
- Through a Homewise Home For Life Plan people aged 60+ can secure this property for up to 59% less, by purchasing a Lifetime Lease



12033963/20260110/AR/NF