



## London Road, TW1

£1,450 Per calendar month

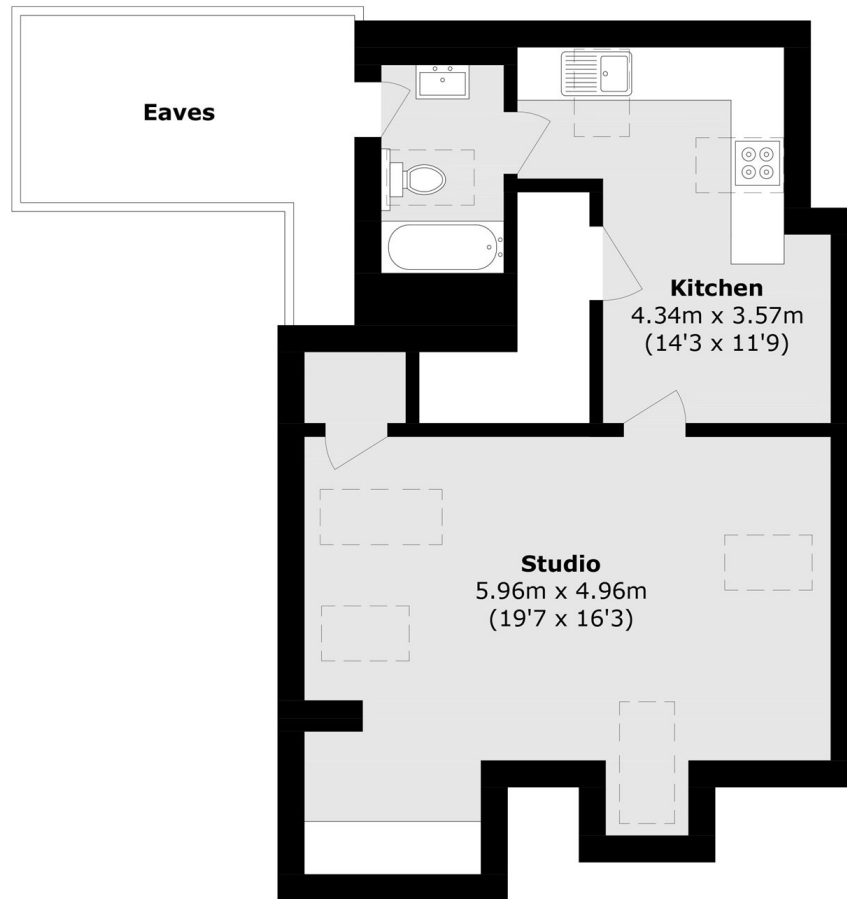
A larger than average studio apartment, beautifully renovated to a high standard throughout. The property features a modern fitted kitchen with integrated appliances, a luxury bathroom and additional storage space in the eaves.

London Road is just a short distance from St Margarets and ideally located for easy access to Twickenham Station, providing swift connections to Central London. The lively town centre is only moments away, offering a fantastic selection of boutiques, cafés, and restaurants, along with scenic riverside walks along the River Thames.

### Features

- Studio Apartment
- Open-Plan Living
- Great Transport Links
- Modern Bathroom
- Off-Street Parking
- Unfurnished

# London Road, Twickenham, TW1



Total area (approx.): 47.4 sq. m (510.2 sq. ft)  
(Excluding Eaves)