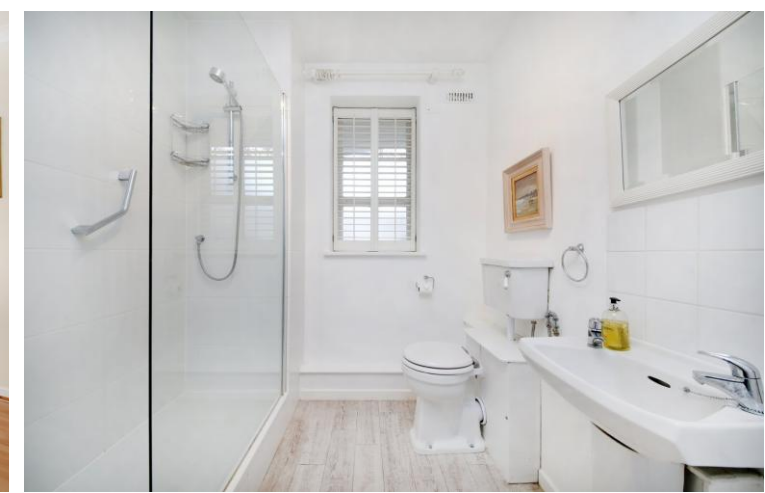




White House
Vicarage Crescent, SW11

CHESTERTONS





This spacious and well-presented two bedroom apartment situated on the second floor of The White House, Vicarage Crescent.

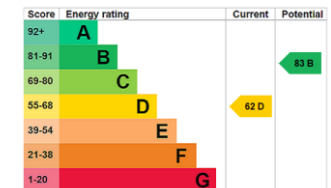
Offering 721 sq ft of internal space, the apartment is filled with natural light and features high ceilings, two good sized bedrooms and great entertaining space. The property comprises a spacious living room with two large windows, a separate kitchen, a good sized bathroom, and two bedrooms both with built in wardrobes.

White House, part of this 1930s purpose-built development, offers secure entry with fob access and an entry phone system. Its prime location on Vicarage Crescent provides easy access to the shops and restaurants of Battersea Square, Kings Road, and Battersea Bridge Road.

Options for travelling over the river are by train from Clapham Junction direct to Victoria and North West London plus there are many local bus routes including one that runs through Battersea Square direct to Victoria via Lower Sloane Street with access to Sloane Square and the Kings Road. Additionally, the City can be easily accessed from Sloane Square. The Clipper river boat is also a great way to get around, one of the many benefits of riverside living.

- Two bedrooms
- 721sq ft
- 2nd floor
- Share of freehold
- Chain Free

Asking Price £525,000

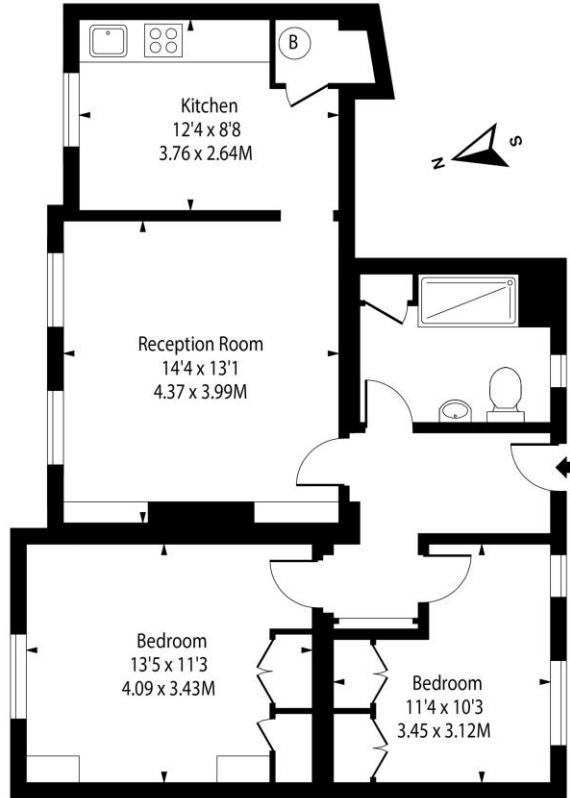


Tenure: Share of Freehold 953 years 11 months
Service Charge: £5,077.42 per annum
Ground Rent: £0
Local Authority: Wandsworth Council
Council Tax Band: D

Chestertons Battersea Park & Nine Elms Sales

62-64 Battersea Bridge Road
 London
 SW11 3AG
 batterseapark@chestertons.co.uk
 0203 040 8700
 chestertons.co.uk

White House, SW11



Second Floor

Approx Gross Internal Area **721 Sq Ft - 66.98 Sq M**

Includes Limited Use Area - 34 Sq Ft
Drawn in Accordance with IPMS 3B: Residential
Illustration For Identification Purposes Only - Not to Scale
www.homespacestudio.co.uk - Ref. No. 54146



Chesterton UK Services Limited trading as Chestertons for themselves and for the vendor of this property whose agents they are, give notice that (i) these particulars do not constitute any part of an offer or contract, (ii) all statements contained within these particulars are made without responsibility on the part of Chestertons or the vendor, (iii) whilst made in good faith, none of the statements contained within these particulars are to be relied upon as a statement or representation of fact, (iv) any intending purchasers must satisfy themselves by inspection or otherwise as to the correctness of each of the statements contained within these particulars, (v) the vendor does not make or give either Chestertons or any person in their employment any authority to make or give representation or warranty whatsoever in relation to this property. Wide angle lenses may be used. ©Copyright Chestertons | Chesterton UK Services Limited | Registered Office 40 Connaught Street, Hyde Park, London W2 2AB Registered Company Number 05334580.



This paper is
100% recyclable