



Boileau Road, W5

£225,000

A one bedroom retirement apartment designed for residents aged 60 and over, situated on the first floor with both ramp and lift access.

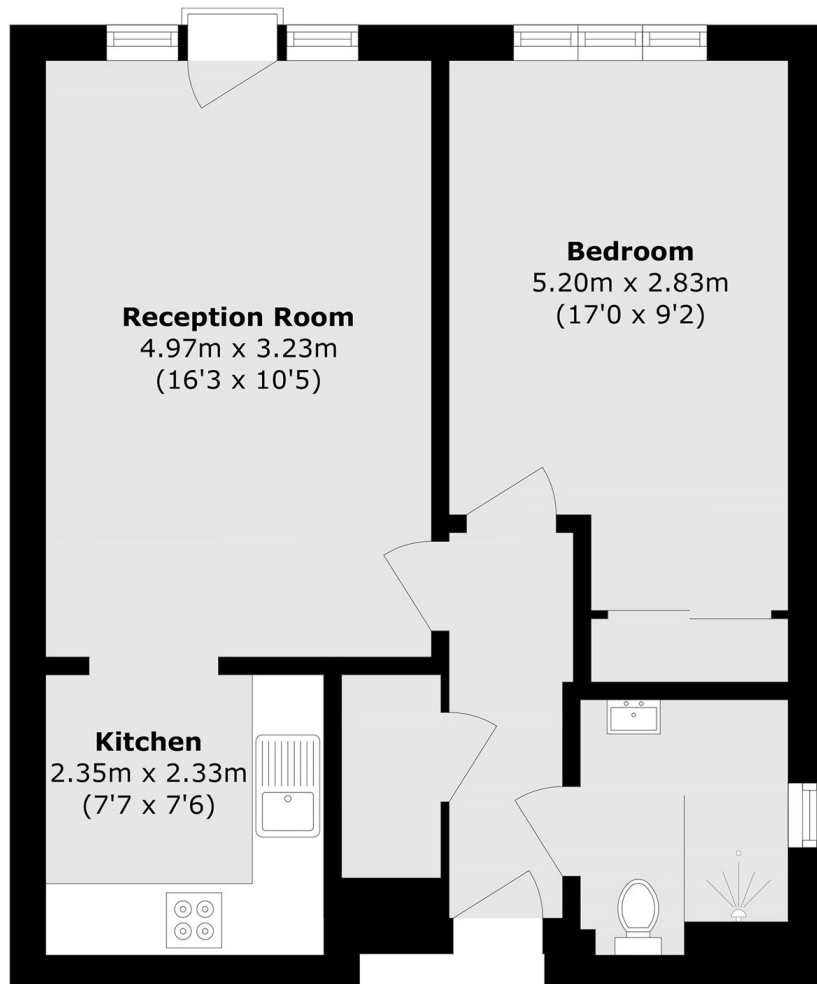
The development benefits from an on-site manager and 24-hour emergency call system, offering added peace of mind. Residents also have access to well-maintained communal gardens and a shared lounge area.

Located on Boileau Road, just moments from London Underground station, North Ealing, Piccadilly line. There is easy vehicular access to the North Circular for both the M4 and A40. There also also numerous local shops and amenities close by.

Features

- Retirement Apartment
- One Bedroom
- First Floor
- Lift Access
- No Onward Chain
- Over 60's Residents

Boileau Road, London, W5



Total area (approx.): 45.9 sq. m (494.0 sq. ft)