



Guide Price
£450,000

Freehold

4x  1x  2x 

**Maplehurst Road,
Chichester, West
Sussex, PO19**

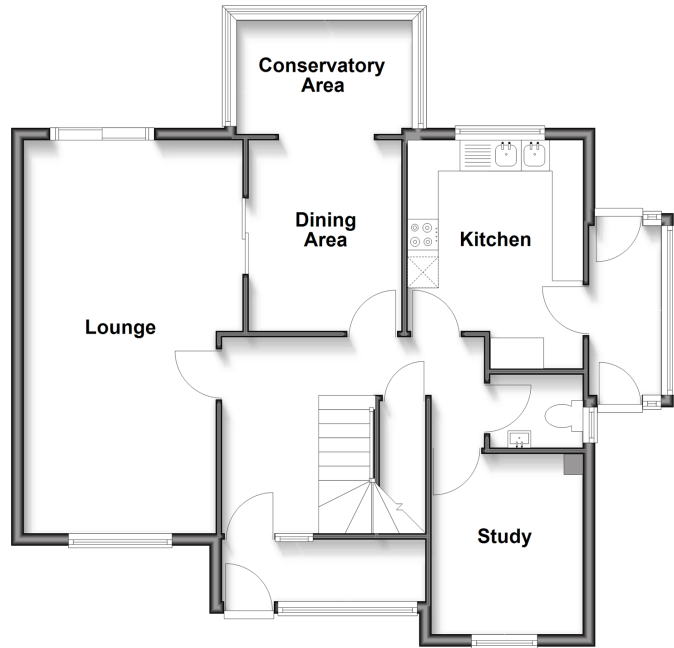
OVER 60?

Secure this property
for up to **59% less!**

cubitt & west
Helping you move forwards

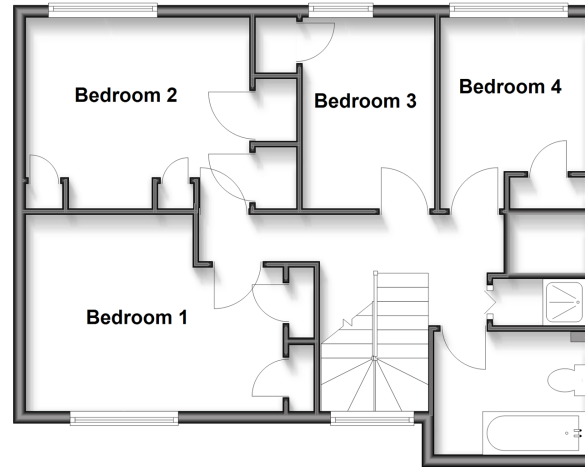
Ground Floor

Approx. 75.0 sq. metres (807.1 sq. feet)



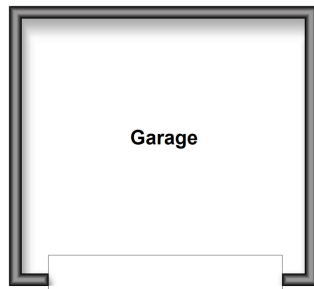
First Floor

Approx. 59.8 sq. metres (644.1 sq. feet)



Outbuilding

Approx. 19.1 sq. metres (205.6 sq. feet)



Accommodation

GROUND FLOOR

Entrance Hall

Cloakroom

Lounge: 21'7 x 10'3 (6.58m x 3.13m)

Dining Room: 10'1 x 8'0 (3.08m x 2.44m)

Kitchen: 12'8 x 9'5 (3.86m x 2.87m)

Study: 9'8 x 8'0 (2.95m x 2.44m)

Conservatory: 10'3 x 6'6 (3.13m x 1.98m)

FIRST FLOOR

Bedroom 1: 13'6 x 13'2 (4.12m x 4.02m)

Bedroom 2: 12'4 x 10'2 (3.76m x 3.10m)

Bedroom 3: 10'0 x 7'10 (3.05m x 2.39m)

Bathroom

OUTSIDE

Rear Garden

Garage

Off Road Parking



Main features

- Spacious Detached Home on Corner Plot
- Four double bedrooms
- Large Expansive Garden
- Double Garage
- Chain Free & Ideal for Modernisation



Nearest Schools

Primary Schools: Jessie Younghusband Primary 0.9 miles, March CofE Primary, The 1.1 miles, Lavant CofE Primary 1.1 miles

Secondary Schools: Fordwater School, Chichester 0.3



Transport Information

Train Stations: Chichester 1.7 miles, Fishbourne 2.3 miles, Bosham 3.5 miles



Address

Maplehurst Road, Chichester, West Sussex, PO19



Directions

For directions to this property please contact us.



cubitt&west
Helping you move forwards

Call Chichester Branch 01243 786581 ■ cubittandwest.co.uk



■ Through a Homewise Home For Life Plan people aged 60+ can secure this property for up to 59% less, by purchasing a Lifetime Lease



40411182/20260416/CNW/HS