



Arrowe Road, Greasby, CH49

Guide Price £399,950

Brennan Ayre O'Neill

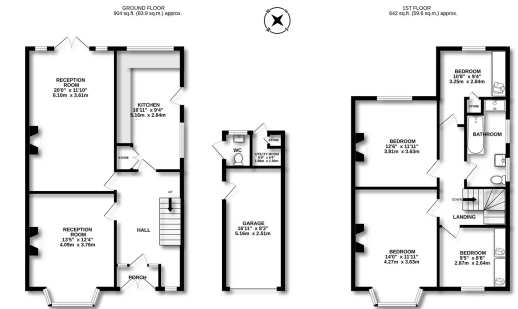
Estate Agents | Surveyors | Property Managers

So yes, a great semi rural spot yet handy, and so what of the house? Beautiful. Well manicured. A perfect 'ready to move into' family home. For this really is a genuinely sized family home, with four bedrooms, an XL large bathroom with four piece suite; an extended rear living room, a generous front reception room and with a family kitchen/diner or breakfast room. In fact, as floor space goes, no room seems to be compromised for another, even the hall is generous (and comes with a recessed corner feature), whilst the landing sensibly mirrors that same size. The bedrooms are fabulous - we would simply urge you to check out our floor plan and then book your viewing please. Only then will you of course begin to appreciate this hugely appealing home.

For your directions please Sat Nav: CH49 1RZ







TOTAL FLOOR AREA: 1320 sqm (14210 sqft) approx.
 While every effort has been made to ensure the accuracy of the figures contained here, responsibility for errors remains solely with the client. The client should verify all dimensions and measurements before any purchase. The actual floor area and dimensions may vary from those shown and no guarantee is made in respect of the same.

Energy Efficiency Rating		
	Current	Potential
Very energy efficient - lower running costs		
(92 plus) A		
(81-91) B		81
(69-80) C	69	
(55-68) D		
(39-54) E		
(21-38) F		
(1-20) G		
Not energy efficient - higher running costs		
England & Wales	EU Directive 2002/91/EC	

- These particulars, whilst believed to be accurate are set out as a general outline only for guidance and do not constitute any part of an offer or contract.
- Intending purchasers should not rely on them as statements of representation of fact, but must satisfy themselves by inspection or otherwise as to their accuracy.
- No person in this firm's employment has the authority to make or give any representation or warranty in respect of the property.