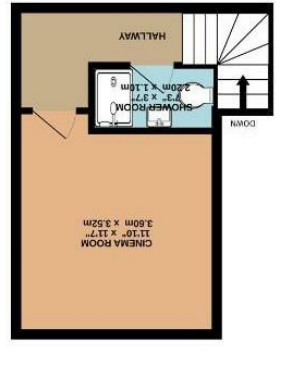
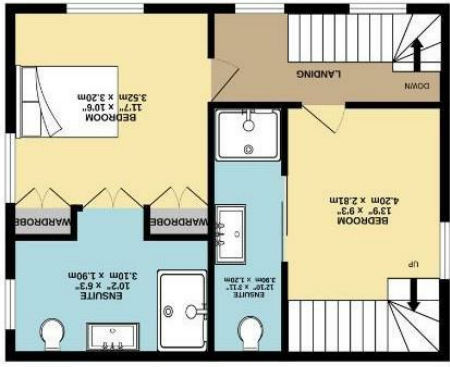
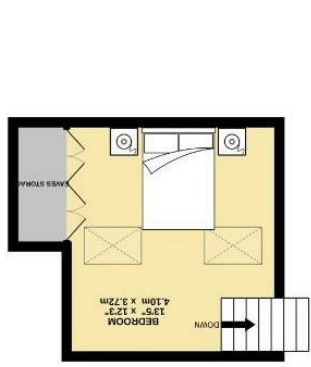


Fishwick nor the vendor or lessor accept any responsibility in respect of these particulars, which are not intended to be statements or representations of fact and any intending purchaser or lessee must satisfy himself by inspection or otherwise as to the correctness of each of the statements contained in these particulars. Any floorplans on this brochure are for illustrative purposes only and are not necessarily to scale.

TOTAL FLOOR AREA : 1440 sq.ft. (133.8 sq.m.) approx.
Measurements are approximate. Not to scale. Illustrative purposes only.
Made with Metropix ©2025





Bottesford Avenue, West Didsbury M20 2LF

£595,000

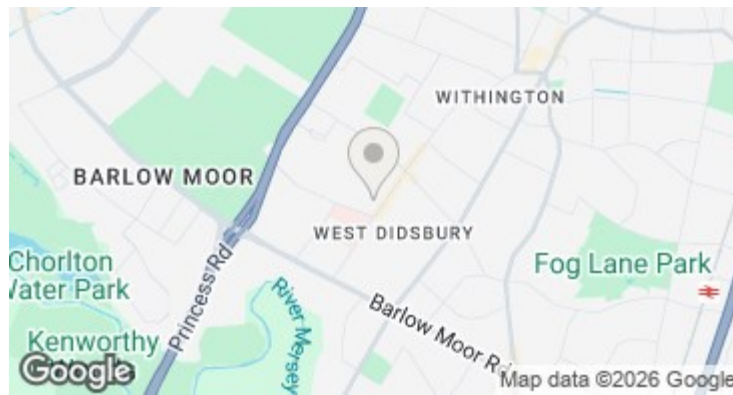


The Property

A superb, DOUBLE FRONTED, two double bedroom VICTORIAN property having been refurbished to an extremely HIGH STANDARD, with stylish living space over FOUR FLOORS, coupled with a GREAT LOCATION in the heart of fashionable WEST DIDSBURY. 1440 sq ft. Ready to move into with numerous noteworthy features including a bespoke fitted kitchen with integrated Neff appliances and central island with a wine cooler, dual aspect living room with fitted dining area, impressive basement with cinema room & contemporary shower suite. To the first floor are two double bedrooms, each with luxurious en-suites, with a further mezzanine double bedroom and ample eaves storage. Bi-fold doors lead you out to an enclosed courtyard garden with a 'Vitas' outdoor pizza oven and decked seating area. uPVC double glazing and gas central heating throughout. NO ONWARD CHAIN.

Directions

M20 2LF



- Victorian double fronted terrace
- Two double bedrooms & mezzanine
- Refurbished to an extremely high standard
- Central West Didsbury location
- Converted basement with cinema room
- Bespoke fitted kitchen
- uPVC double glazing
- Gas central heating
- Enclosed courtyard garden with decked seating area
- NO CHAIN

Postcode - M20 2LF

EPC Rating - C

Floor Area - 1440.00 sq ft

Local Authority - Manchester City Council

Council Tax - C

