



Crystal Palace Park Road, London

London

Offers Over £230,000

Crystal Palace Park Road

London

Bright top-floor one-bedroom flat with stunning communal gardens, spacious living, built-in storage, great transport links, and close to Crystal Palace Park, shops, and cafés.

Council Tax band: C

Tenure: Leasehold

EPC Energy Efficiency Rating: D

EPC Environmental Impact Rating: C

- Chain-free
- Communal gardens
- Stunning views
- Ideal renovation project
- Excellent transport links nearby
- Gas central heating











Approximate Gross Internal Area
39.64 sq m / 426.68 sq ft

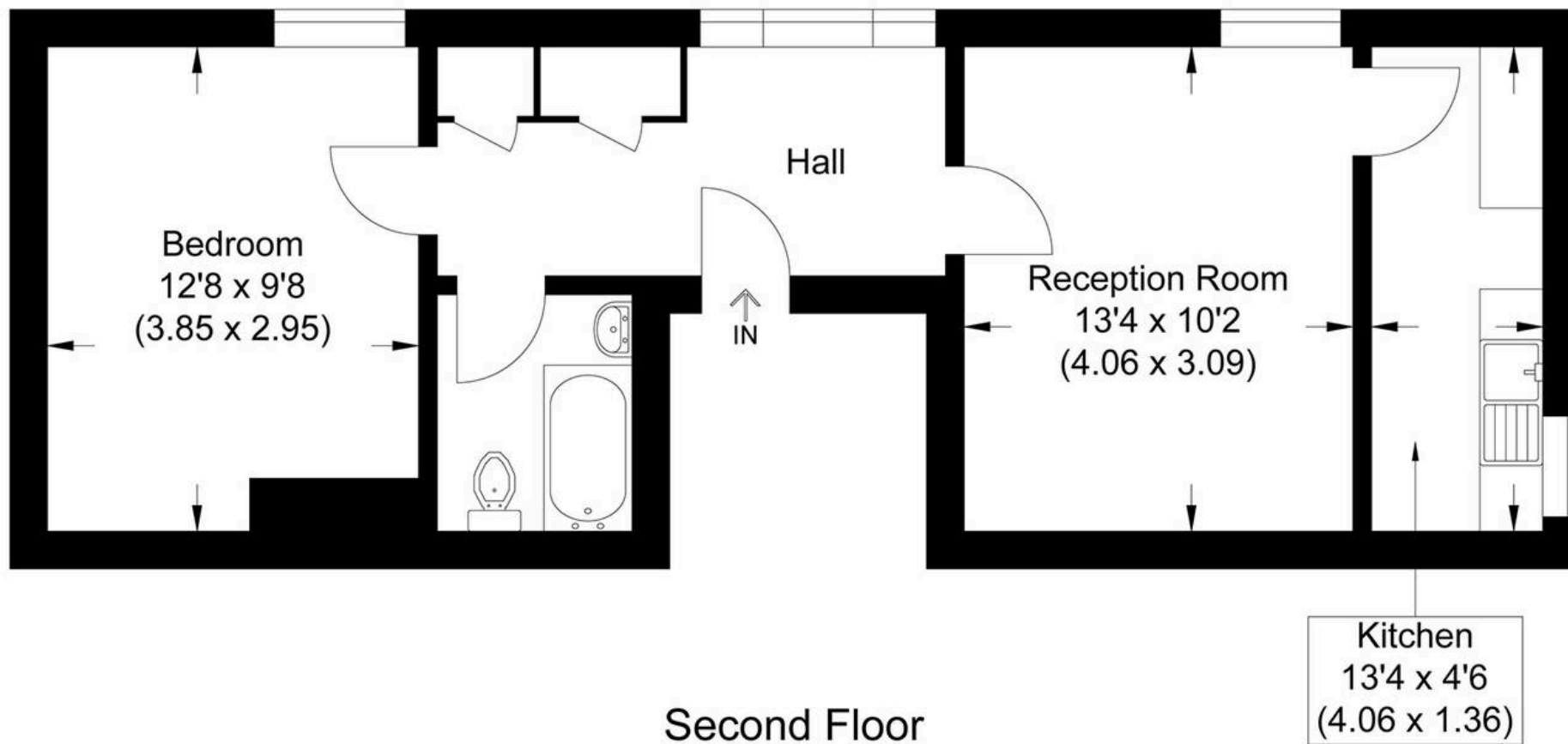


Illustration for identification purposes only, measurements are approximate, not to scale.



MA-Residential

1st Floor Romer House, 132 Lewisham High Street, London - SE13 6EE

020 8264 4464

hello@ma-residential.com

ma-residential.com