

# Gladstone Court

Ruislip • Middlesex • HA4 6EX  
PCM: £1,750 PCM



coopers  
est 1986



A well presented and MODERN two bedroom second floor LUXURY APARTMENT located in this HIGHLY SOUGHT AFTER GATED DEVELOPMENT, a stones throw from RUISLIP HIGH STREET. This superb property comprises of: two double bedrooms, lounge, kitchen/breakfast room with integrated appliances including dishwasher, plus modern bathroom with shower, secure allocated parking, double glazing, gas central heating and entry phone system.

Only a few minutes walk to Ruislip High Street with it's Metropolitan & Piccadilly Line station & West Ruislip (Central & Chiltern Line).

Spacious

Well presented

Ruislip Station within walking distance

Gated development

Modern fitted kitchen area

Top floor apartment

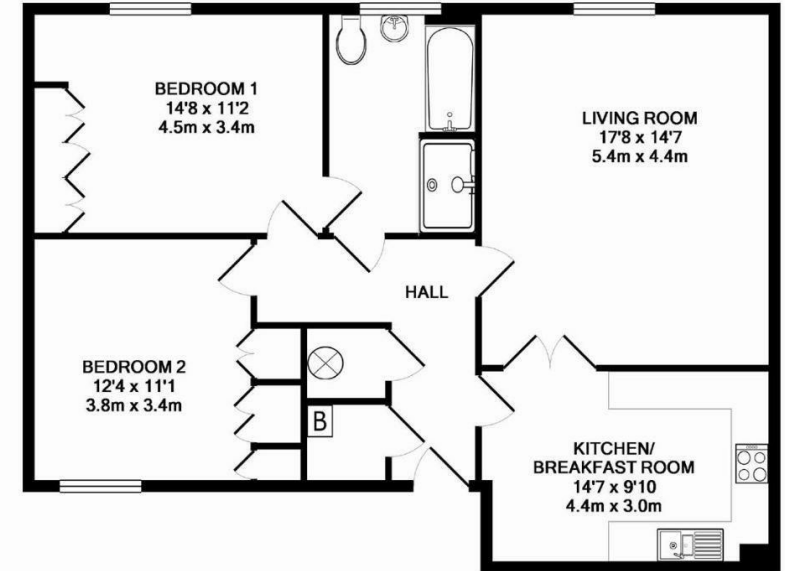
Entryphone system

Very close to Ruislip High Street

Unfurnished

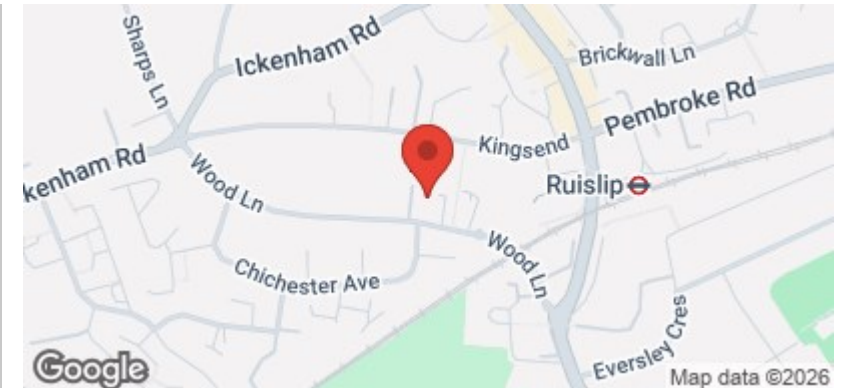
**Available Date**

27th May 2026



TOTAL APPROX. FLOOR AREA 917 SQ.FT. (85.2 SQ.M.)

Whilst every attempt has been made to ensure the accuracy of the floor plan contained here, measurements of doors, windows, rooms and any other items are approximate and no responsibility is taken for any error, omission, or mis-statement. This plan is for illustrative purposes only and should be used as such by any prospective purchaser. The services, systems and appliances shown have not been tested and no guarantee as to their operability or efficiency can be given

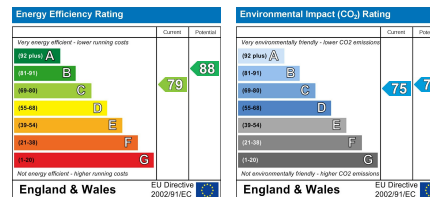


**coopers**  
est 1986

**01895 625 625**

126-128 High Street, Ruislip,  
Middlesex, HA4 8LL  
rl@coopersresidential.co.uk

**CoopersResidential.co.uk**



Important Notice: These particulars, whilst believed to be accurate are set out as a general outline only for guidance and do not constitute any part of an offer or contract. Intending purchasers should not rely on them as statements or representation of fact, but must satisfy themselves by inspection or otherwise has the authority to make or give any representation or warranty in respect of the property.