



Guide Price
£215,000

Freehold

3x  1x  1x 

**St. Luke's Avenue,
Ramsgate, Kent, CT11**

OVER 60?

Secure this property
for up to **59% less!**

Wards
Helping you move forwards



Main features

- Being sold with no onward chain
- Original Victorian fireplace
- Spacious open plan lounge/diner
- Convenient location for the town and train station
- Plenty of scope to make your own

Accommodation

GROUND FLOOR

Entrance Hallway

Lounge : 14'4 x 10'7 (4.37m x 3.23m)

Dining Area : 11'7 x 11'5 (3.53m x 3.48m)

Kitchen : 11'6 x 8'4 (3.51m x 2.54m)

Shower Room

SPLIT LEVEL FIRST FLOOR

Landing

Bedroom 3 : 10'4 x 7'7 (3.15m x 2.31m)

Bedroom 2 : 12'2 x 8'9 (3.71m x 2.67m)

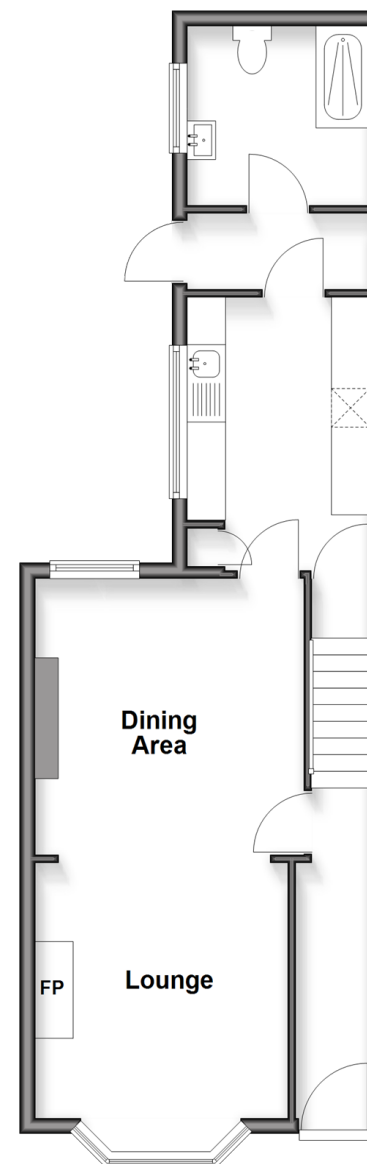
Bedroom 1 : 12'7 x 10'8 (3.84m x 3.25m)

OUTSIDE

Garden to Rear

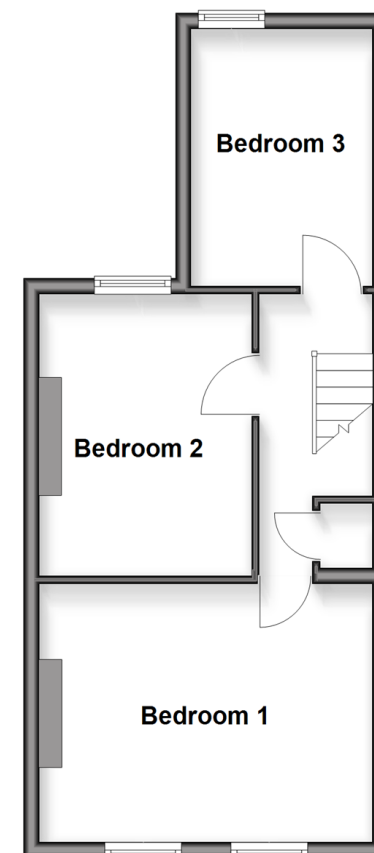
Ground Floor

Approx. 47.7 sq. metres (513.2 sq. feet)



Split Level First Floor

Approx. 39.0 sq. metres (420.2 sq. feet)



Call Ramsgate - 01843 580314 ■ wardsof Kent.co.uk

- Legal advice should be taken to verify fixtures/fittings, planning, alterations and/or lease details
- Appliances & services are untested, dimensions are approximate and floor plans are not to scale
- Through a Homewise Home For Life Plan people aged 60+ can secure this property for up to 50% less, by purchasing a Lifetime Lease



11434833/20251211/EM/AP