



# ENNISMORE GARDENS

LONDON SW7

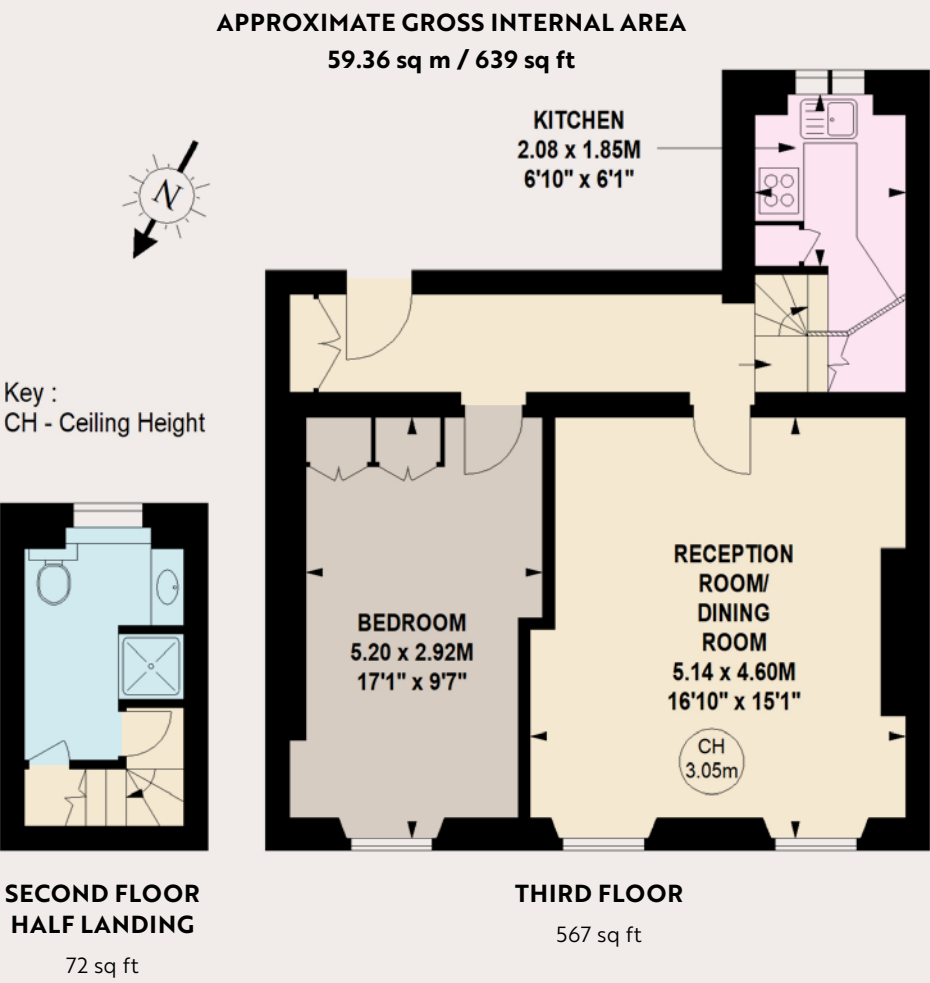


A charming one bedroom flat on the third floor (with lift) of this imposing period conversion backing onto lovely communal gardens. The flat now in need of some updating has been a rental investment for the owners for many years and would also make an excellent pied-à-terre.



This is a prime location between Hyde Park and Harrods, close to other excellent facilities in Knightsbridge and South Kensington and a short walk from Hyde Park.

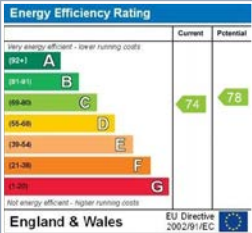
- Double Bedroom ■ Bathroom
- Reception Room
- Kitchen ■ Lift



PRICE £750,000

TENURE Leasehold with 986 Years Remaining

SERVICE CHARGE  
Approx £7,766 per annum



www.nicolasvanpatrick.com