

Novello Street

£1,725,000

BRIK





Novello Street

£1,725,000 | 4 Bed | 1,426 | 132 | F | £120,750
FREEHOLD | HOUSE | SQ FT | SQ M | COUNCIL TAX | STAMP DUTY

A beautifully presented Victorian house with one of the largest gardens on Novello Street, which is one of Parsons Green's prettiest and sought-after locations.

This superb four double bedroom house is arranged over three floors and extends to over 1400sq ft of well proportioned living space. The ground floor comprises a spacious double reception room at the front of the house which leads onto a modern kitchen breakfast room with French doors opening directly onto an impressive private garden, ideal for entertaining or family living. On the first floor there are two double bedrooms. The larger bedroom is positioned at the front of the house with an en-suite, while the second bedroom sits at the rear and is served by a large family bathroom. The top floor has been converted, offering two further double bedrooms with two en-suite bathrooms.

The house is situated in an extremely convenient location on Novello Street (one of Fulham's most idyllic streets), only moments from Parsons Green Station (District Line, Zone 2) and in-between the large open spaces of Eel brook Common and the incredibly desirable Parsons Green. There is a Waitrose supermarket nearby, as is the famous White Horse Pub and numerous independent shops, cafés and restaurants located on Fulham Road, New Kings Road and Parsons Green close to hand. Fulham Broadway is also only a short stroll away through the park, where there is an M&S Foodhall, a Vue cinema, David Lloyd gym and a plethora of other amenities. EPC rating - C

- ✓ Four bedrooms
- ✓ Four bathroom
- ✓ Double reception room
- ✓ Kitchen breakfast room
- ✓ 21'8 (6.68m) private garden
- ✓ Excellent location, close to parks
- ✓ Chain free
- ✓ Attractive period house
- ✓ Approx.1426 sq ft (132 sq m)
- ✓ Council taxband - F



Jessica Galletta

SALES ASSOCIATE
+8 YEARS EXPERIENCE

020 7384 6790

jess@brik.co.uk













FULHAM AREA GUIDE

Parsons Green

“Parsons Green” is located right in the heart of Fulham, and refers to the area immediately adjacent to and encircling Parsons Green itself. It has become very much an up-market brand in itself - distinct from Fulham - and normally comes top of the list for people looking to buy.

The roads surrounding the area are lined with pretty Victorian terraced houses (and in some cases flats) and are some of the most desirable and in demand properties Fulham has to offer. The Peterborough Estate, sitting just to the South of the Green, holds some of the most expensive properties in Fulham and has no doubt powered the area into the most recognisably up-market area of Fulham. Indeed (with only a few exceptions) the closer you get to Parsons Green the more you'll be expected to pay.

One of the many reasons Parsons Green is so popular are its brilliant transport links. It has its own underground station (Parsons Green, District Line Zone 2) just North of the green itself.

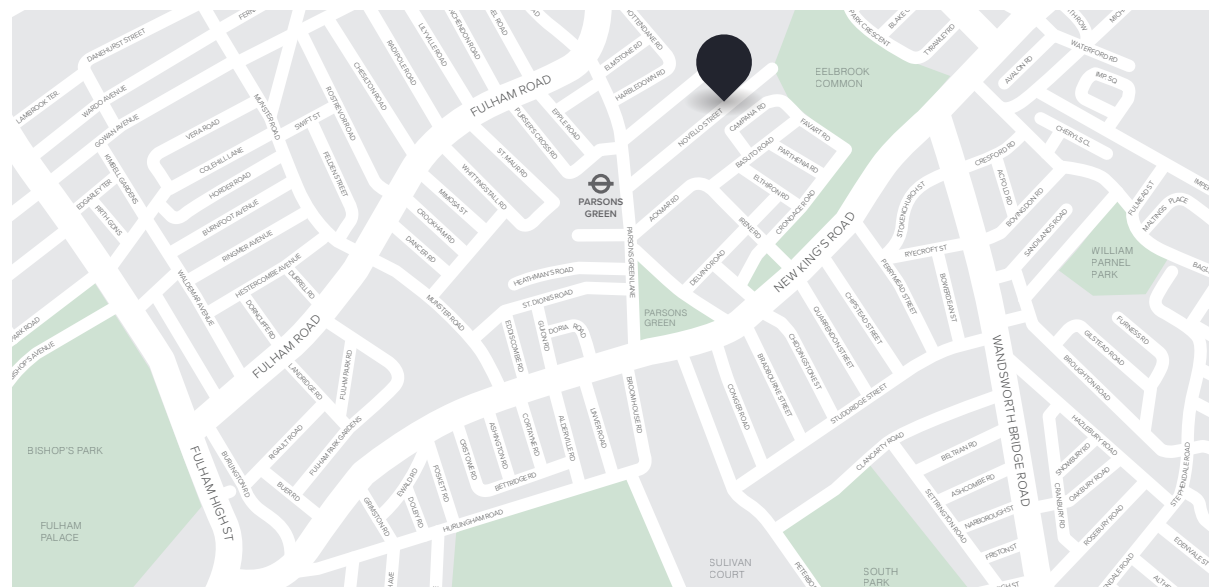
CLOSEST:

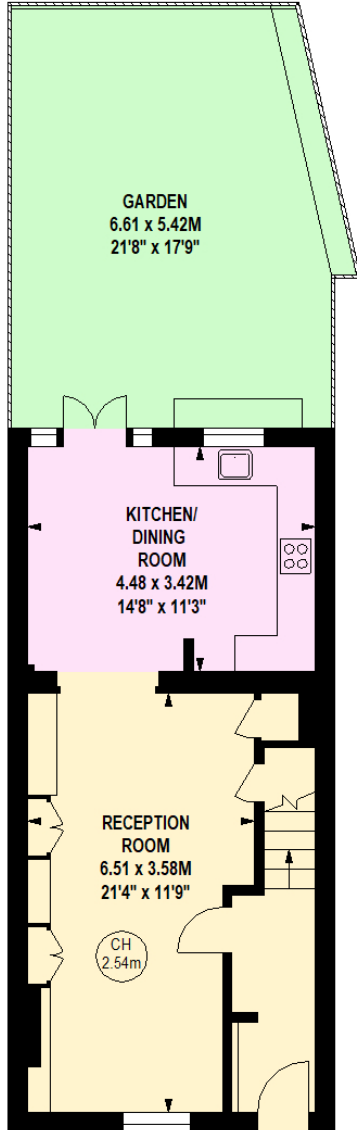
- 🚶 Parsons Green (🚶 4 mins)
- 🚶 Putney Bridge (🚶 20 mins)
- 🚶 Eel Brook Common (🚶 2 mins)

KEY:

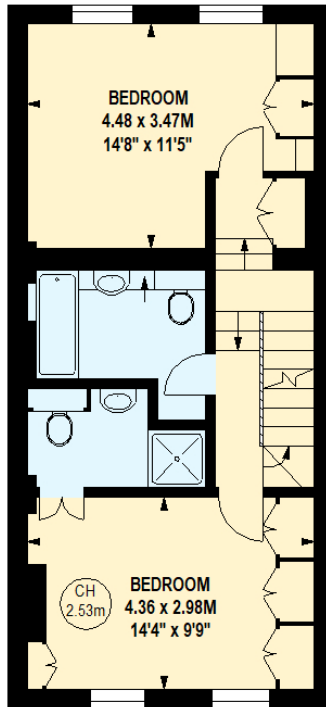
- 📍 Property location
- ‘Parsons Green’ area of Fulham

Read all our Fulham area guides here

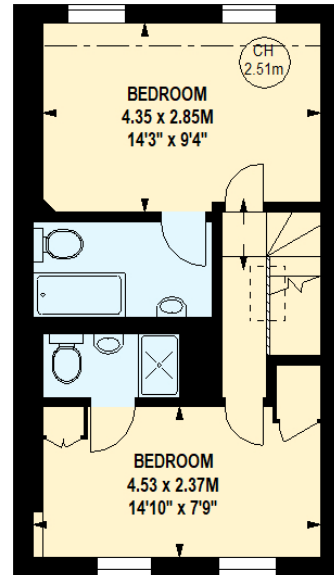




Ground Floor



First Floor



Second Floor

Key :
CH - Ceiling Height

