



LEASEHOLD

Apartment

LOWES YARD, ST. GEORGES STREET, NORWICH

Price Guide

£190,000

FEATURES

- £190,000 - £200,000
- One Generous Double Bedroom
- First Floor Flat
- Modernised Throughout
- Stunning Lounge/Dining Room
- Garage & Parking Space
- Central Location
- No Onward Chain



1 Bedroom Apartment located in Norwich

**** £190,000 - £200,000 **** Located in the heart of Norwich city centre, this stunning one-bedroom first-floor apartment on St. Georges Street offers a perfect blend of modern living and convenience. Upon entering, you are greeted by a secure communal entrance shared with one other flat.

The apartment boasts a contemporary fitted kitchen, ideal for those who enjoy cooking and entertaining.

The lounge diner is particularly impressive, featuring a beautiful large window that floods the space with natural light, creating a warm and inviting atmosphere. The generous bedroom provides ample space for relaxation, while the modern bathroom is designed with comfort in mind. Additionally, a spacious storage cupboard is available, which conveniently houses a fully serviced gas boiler, ensuring efficiency and peace of mind.

For those who require parking, this property includes a garage and a driveway, a rare find in such a central location. The apartment is perfectly situated close to a variety of shops, bars, and eateries, making it an ideal choice for anyone looking to immerse themselves in the vibrant lifestyle that Norwich has to offer. With no onward chain, this property is ready for you to move in and make it your own. Whether you are a first-time buyer or seeking a stylish city retreat, this apartment is not to be missed.

Entrance Hall

Tiled flooring, doors to rooms, radiator, storage cupboard housing boiler.

Kitchen

10'2" x 7'1"

Tiled flooring, range of fitted base and wall units with work surfaces over, plumbing and space for washing machine, space for free standing cooker, space for fridge/freezer, pantry, radiator, tiled splash backs, double glazed window to front, under cupboard lighting.

Sitting/Dining Room

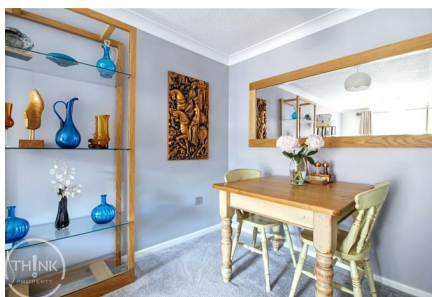
18'0" x 9'5"

Fitted carpet, double glazed bay window to front, radiator x2.

Bedroom

16'11" x 8'3"

Fitted carpet, double glazed window to side, radiator x2.





NORWICH SALES | 3 VISION PARK QUEENS HILLS, NORWICH, NR8 5HD



Bathroom

6'1" x 5'6"

Tiled flooring, low level W/C, vanity sink unit, panelled bath with shower, tiled walls, obscured double glazed window to side, extractor.

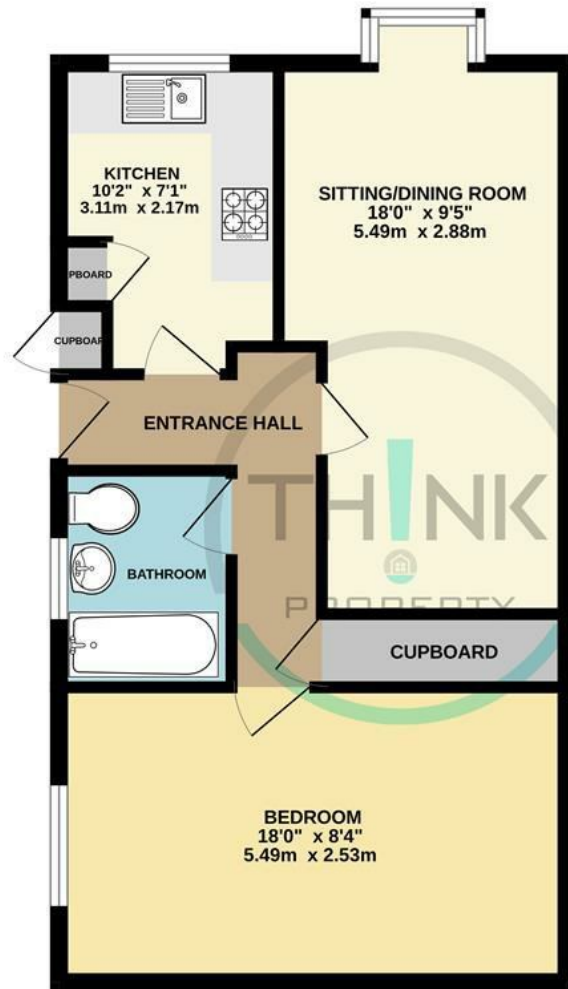
Outside

There is a driveway and allocated parking for one car, bike storage shed and a further storage cupboard directly outside the front door.

There is a secure entry gate which is shared with one other flat.



GROUND FLOOR



Call us on

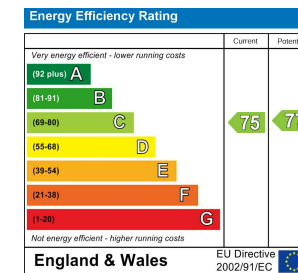
01603 338433

norwich@thinkproperty.ltd

<https://www.thinkproperty.ltd/>

Council Tax Band

A



Agents Note: Whilst every care has been taken to prepare these particulars, they are for guidance purposes only. All measurements are approximate and are for general guidance purposes only and whilst every care has been taken to ensure their accuracy, they should not be relied upon and potential buyers are advised to recheck the measurements.

Whilst every attempt has been made to ensure the accuracy of the floorplan contained here, measurements of doors, windows, rooms and any other items are approximate and no responsibility is taken for any error, omission or mis-statement. This plan is for illustrative purposes only and should be used as such by any prospective purchaser. The services, systems and appliances shown have not been tested and no guarantee as to their operability or efficiency can be given.
Made with Metroplex ©2025

