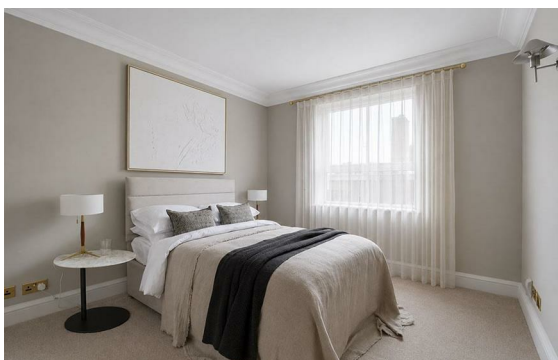
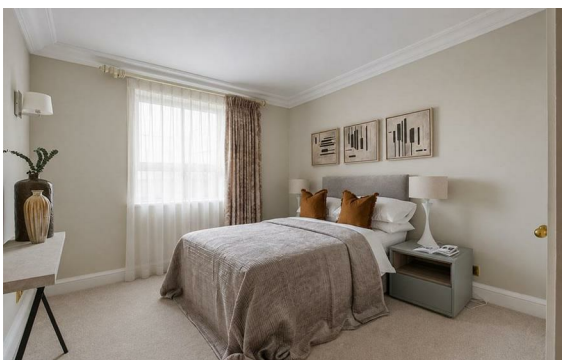
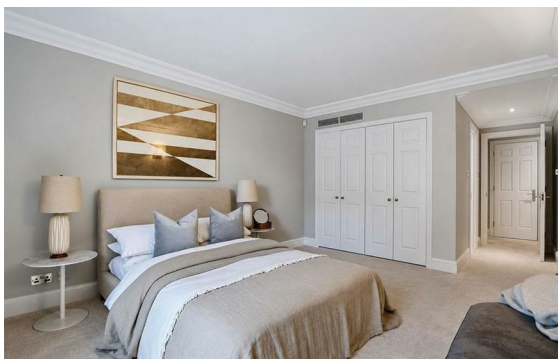


[George Street, Marylebone, London, W1H](#)

Rent £3,215 PCM

4 Bed | 4 Bath | 1 Reception

Please call us on 020 7724 2233 or email us info@newingtonstates.com to book a viewing.



A well-presented four-bedroom apartment offering generous living accommodation and a practical layout close to Hyde Park and Oxford Street.

The property features a large reception and dining room, a fully fitted kitchen with breakfast area, and four/five well-proportioned bedrooms. Three en-suite shower rooms are complemented by an additional shower room and guest WC, providing flexible accommodation for families or sharers. A private terrace/balcony and air conditioning throughout further enhance comfort and practicality.

Ideally located close to Marble Arch Station and Edgware Road Station, with Hyde Park and Oxford Street nearby.

EPC Rating: C

Energy Efficiency Rating: C

Agents Note: Whilst every care has been taken to prepare these particulars, they are for guidance purposes only. All measurements are approximate and are for general guidance purposes only and whilst every care has been taken to ensure their accuracy, they should not be relied upon and potential buyers/tenants are advised to recheck the measurements.

NEWINGTON
— ESTATES —

60 Upper Montagu Street

London

W1H 1SN

020 7724 2233

info@newingtonstates.com

<http://www.newingtonstates.com>