



Ely Road, Little Downham, CB6 2SN

Rent - £1,215 Per Month Deposit - £1,401

A beautifully presented two bedroom bungalow in the sought-after village of Little Downham, this fully refurbished home offers stylish single-level living with a fresh, modern finish throughout. The property has been updated to a high standard and features bright, well-proportioned rooms, a sleek contemporary kitchen, a smart modern bathroom, and tasteful neutral décor that creates a light and welcoming feel from the moment you step inside.

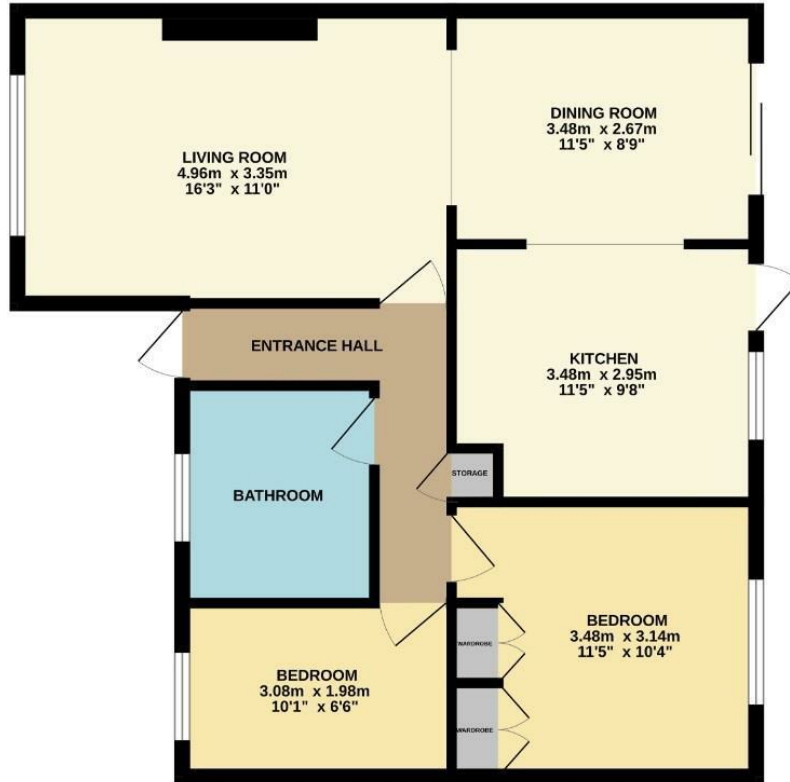
Outside, the bungalow continues to impress with private garden space ideal for relaxing or entertaining, off-road parking, and the added benefit of a garage. Combining comfort, practicality, and a turn-key finish, this is an excellent opportunity for a modern home in a popular village setting with easy access to Ely, RAF bases and surrounding amenities.

- FULLY REFURBISHED THROUGHOUT
- NEARBY TO RAF BASES
- BRIGHT AND SPACIOUS INTERIORS
- GARAGE AND OFF-ROAD PARKING
- COUNCIL TAX BAND - C
- TWO BEDROOM DETACHED BUNGALOW
- CONTEMPORARY BATHROOM
- STYLISH MODERN KITCHEN
- EPC RATING - E
- EARLY VIEWING ADVISED



Council Tax Band: C - EPC Rating: E 46

GROUND FLOOR
63.3 sq.m. (681 sq.ft.) approx.



TOTAL FLOOR AREA: 63.3 sq.m. (681 sq.ft.) approx.
Whilst every attempt has been made to ensure the accuracy of the floorplan contained here, measurements of doors, windows, rooms and any other items are approximate and no responsibility is taken for any error, omission or misstatement. This plan is for illustrative purposes only and should be used as such by any prospective purchaser. The services, systems and appliances shown have not been tested and no guarantee as to their operability or efficiency can be given.
Made with MyPlanSpace 6/2023

