

For Sale



LCP/PrivateOffice  
est.1990

Ormond House, Medway Street, Westminster SW1P

+44 (0) 207 723 1733 / sales@lcpprivate.com

£582,000

# Ormond House SW1P

£600,000

A well presented one bedroom apartment located on the second floor (with lift) of a modern, purpose-built block in Westminster.

Comprising bedroom, bathroom, reception and kitchen. The property benefits from an abundance of natural light, good storage and two balconies. The development boasts a concierge, communal heating, and a secure underground parking.

Ideally located for the amenities of Horseferry Road and Victoria Street, the transport connections of St James's Park Underground Station are close by, as is the open green space of the Channel 4 Community Garden.

**Asking Price:** £582,000 STC

**Lease:** 93 years (approx.)

**Council Tax:** Westminster Band F

**Service Charge:** £4,700 per annum (approx.)

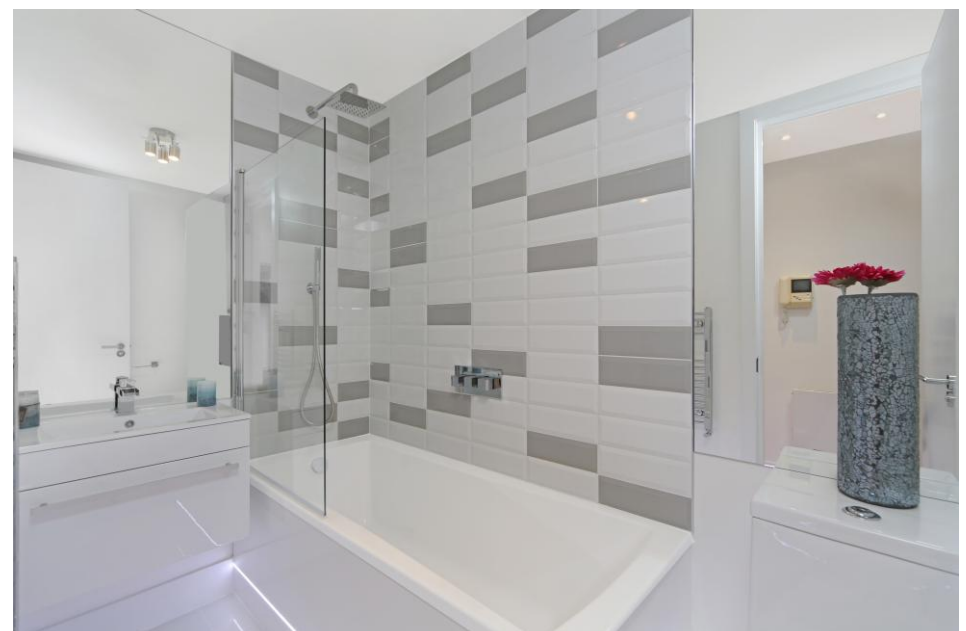
**Ground Rent:** £430 per annum

**Current EPC Rating:** 76

**Potential EPC Rating:** 76



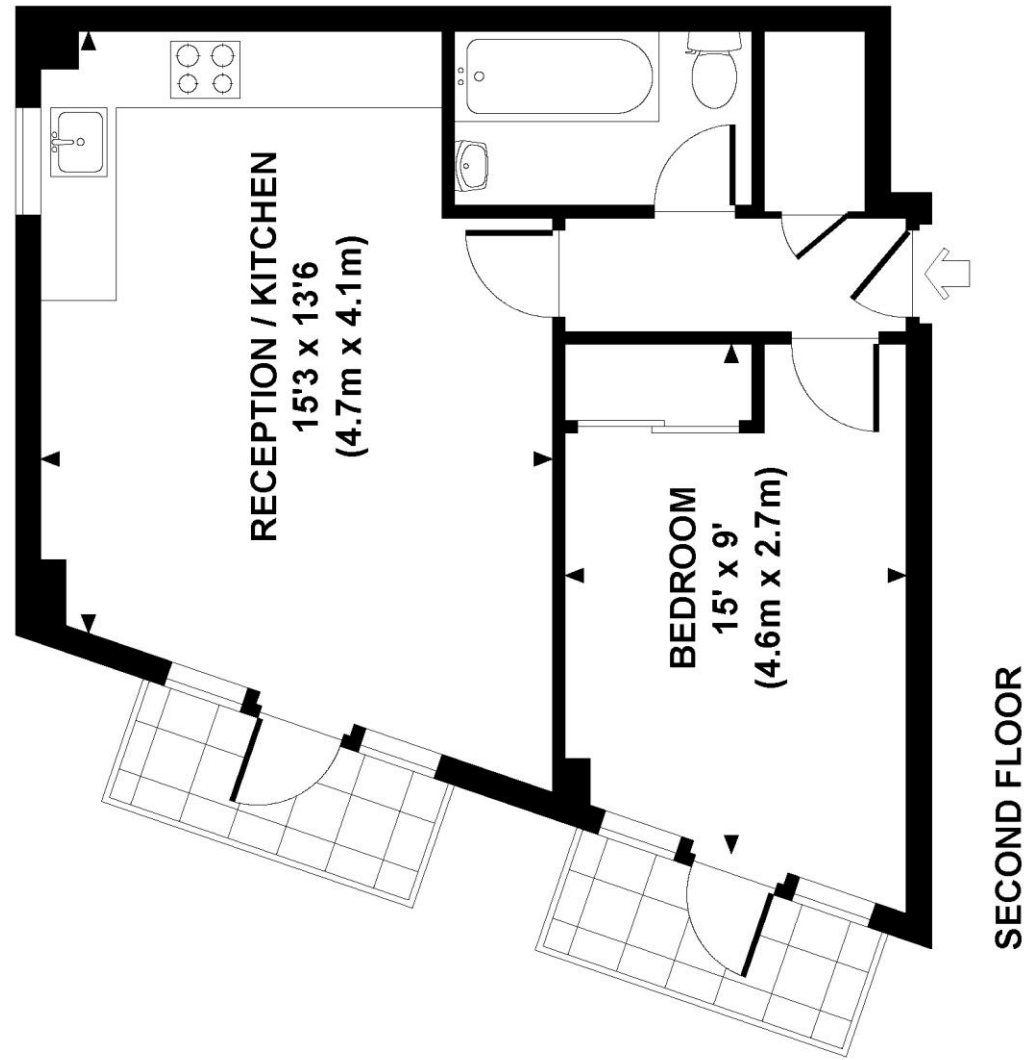






## ORMOND HOUSE, SW1P

Approx. gross internal area  
436 Sq Ft / 40.5 Sq M.



All measurements are approximate and for illustration purposes  
only as defined by the RICS Code of Measuring Practice © 2014  
Dowling Jones Design [www.dowlingjones.com](http://www.dowlingjones.com) 020 7610 9833



Please note none of the statements contained in these particulars as to this property are to be relied on as statements or representation of fact. It should also be noted that amenities and appliances have not been tested.



# LCP

est.1990

+44 (0)207 723 1733  
LCP House, Ogle Street,  
London, W1W 6HU

[contact@lcpprivate.com](mailto:contact@lcpprivate.com)