



4 Bedford Chambers - 096611 18 Bedford Street, Leeds, West Yorkshire, LS1 5PZ

£925 PCM

SW
RESIDENTIAL

- Grade II Listed Building
- Contemporary kitchen
- High Speed Broadband and Sonos Surround Sound
- Council Tax Band B
- Split Level Apartment
- High quality furnishings
- Excellent Central Location
- Available Late June

THE PROPERTY

This is a fantastic opportunity to rent a compact yet beautifully presented split level apartment situated in the heart of the City centre in a grade II listed building.

Located within a stones throw of a variety of bars and restaurants, yet a very quiet tranquil apartment.

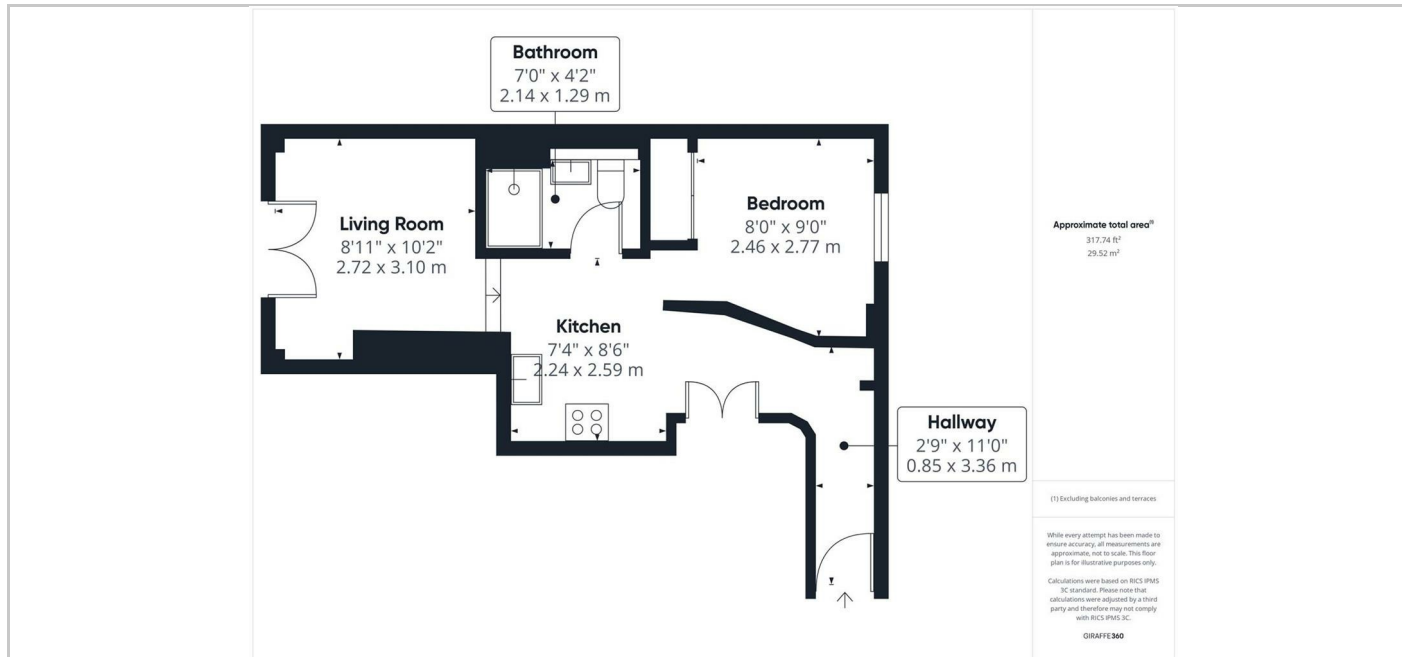
With fully equipped contemporary kitchen, steps down to lounge area with balcony overlooking Park Row. Double bedroom with built in wardrobe, house shower room. Available fully furnished.

This apartment must be viewed to appreciate the quality of accommodation on offer.

Suited to a single tenant due to compact nature of the apartment.

Available now

SITUATION



Directions

6th Floor Central Square, 29 Wellington Street, West Yorkshire, LS1 4DL
Tel: 0113 221 6000 Email: residential@sw.co.uk