



LAKESIDE EAST LAKESIDE CLOSE STAINES
£1,650 PER MONTH AVAILABLE 05/09/2025

Hamptons

THE HOME EXPERTS

{ THE PARTICULARS

Lakeside East Lakeside Close
Staines Upon Thames TW18

£1,650 Per Month
Furnished

-  1 Bedroom
-  1 Bathroom
-  1 Reception

Features

- Stunning riverside location with peaceful views, - Prime location in Staines-upon-Thames, - Riverside calm with city convenience, - Parking available at an additional cost, - Bright, spacious open-plan layout with plenty of natural light, - Vibrant local lifestyle, - Prices starting from £1,650 per month

Council Tax

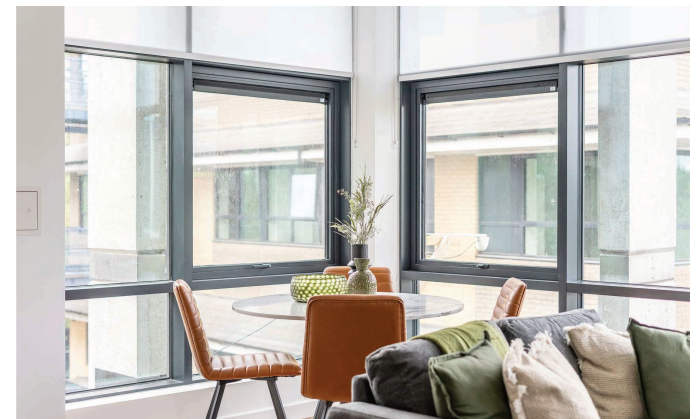
Council tax band not specified

Hamptons
11-13 Queen Street
Maidenhead, SL6 1NB
01628 407350
corporate.lettingssupport@hamptons.co.uk
www.hamptons.co.uk

{ BRAND-NEW RIVERSIDE LIVING IN STAINES -UPON-THAMES

The Property

Discover the perfect balance of modern comfort and riverside serenity in this brand-new, fully furnished 2-bedroom apartment in the heart of Staines-upon-Thames. Ideally situated where vibrant town life meets the tranquility of the river, this home offers the best of both worlds. Step out to your private riverside walk and enjoy peaceful moments by the water, all while cafés, shops, and everyday amenities are just a short stroll away. Inside, the apartment is designed to impress. A bright, open-plan living area with floor-to-ceiling windows welcomes in natural light and frames the riverside setting. The sleek, fully fitted kitchen features premium finishes and integrated appliances, while the contemporary bathroom offers a touch of hotel-style luxury. With two spacious bedrooms, you'll have flexibility to create a comfortable retreat, stylish guest room, or dedicated home office.



THE CAUSEWAY

Approximate Gross Internal Area = 485 sq. ft. (45.1 sq. m.)

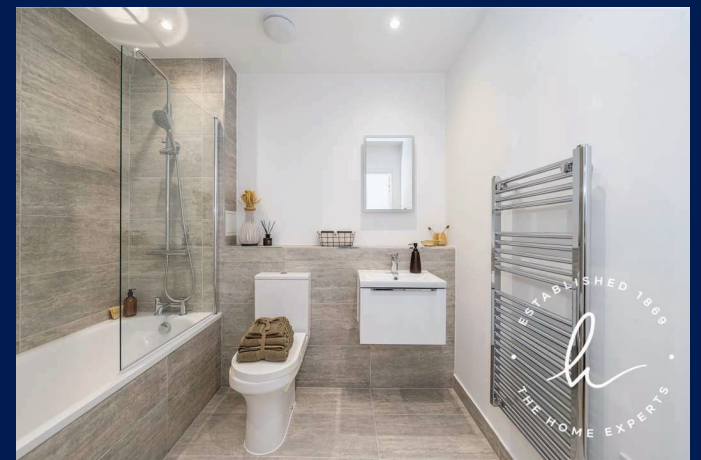
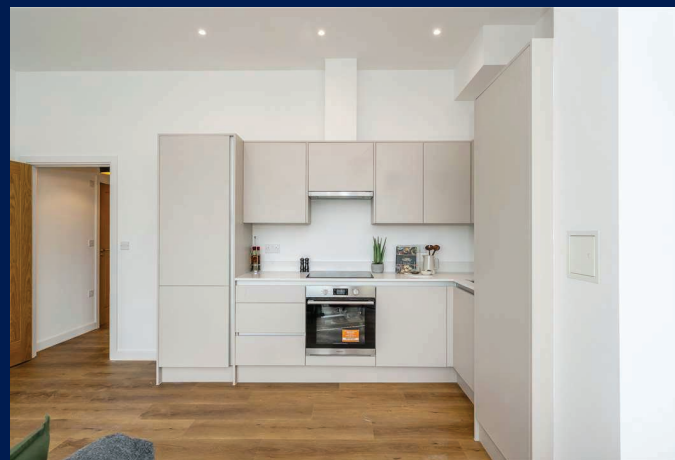


This plan is for layout guidance only. Not drawn to scale unless stated. Windows and door openings are approximate. Whilst every care is taken in the preparation of this plan, please check all dimensions, shapes and compass bearings before making any decisions reliant upon them.
ID 1236424

For Clarification

We wish to inform prospective tenants that we have prepared these particulars as a general guide and they have been confirmed as accurate by the landlord. We have not verified permissions, nor carried out a survey, tested the services, appliances and specific fittings. Room sizes are approximate and measurement figures rounded: they are taken between internal wall surfaces and therefore include cupboards/shelves, etc. Accordingly, they should not be relied upon for

carpets and furnishings. It should also be noted that all fixtures and fittings, carpeted, curtains/blinds, kitchen equipment and garden statuary, whether fitted or not, are deemed removable by the landlord unless specifically itemised with these particulars. Please enquire in office or on our website for details on holding deposit and tenancy deposit figures.



ESTABLISHED 1969
THE HOME EXPERTS