



Haslucks Green Road, Shirley Solihull B90 2EJ

welcome to

Haslucks Green Road, Shirley Solihull

A beautiful five-bedroom detached family home on the desirable Haslucks Green Road in Shirley, offering spacious and versatile living across two floors. Featuring three reception rooms, two bathrooms, a rear garden, a garage and ample driveway parking.

Agents Note

A portion of the garden (not shown in photos) will be retained by the current owner. Please ask your agent for further details.

Entrance Hall

Radiator

Lounge

14' 5" x 13' 5" (4.39m x 4.09m)

Bay window to front, radiator

Reception Room

10' 4" x 22' 3" (3.15m x 6.78m)

Window to side, sliding door to rear, radiator

Dining Room

13' 4" x 9' 4" (4.06m x 2.84m)

Windows to front and rear, radiator, archway to kitchen

Kitchen

12' 5" x 14' 11" (3.78m x 4.55m)

Window to front, window and door to rear, space for white goods, double gas cooker

Cloakroom

Toilet, sink, shower, paritally tiled.

Bedroom 1

12' x 13' 4" (3.66m x 4.06m)

Window to front, radiator

Bedroom 2

9' 1" x 9' 10" (2.77m x 3.00m)

Window to front, radiator

Bedroom 3

12' x 10' 2" (3.66m x 3.10m)

Window to front and side, radiator

Bedroom 4

10' 1" x 10' 8" (3.07m x 3.25m)

Window to side, radiator

Bedroom 5

9' 11" x 11' 8" (3.02m x 3.56m)

Window to side, radiator

Bathroom 1

Shower, sink, toilet, heated towel rail, full height tiles

Bathroom 2

Sink, shower over bath, toilet, heated towel rail, full height tiles





view this property online shipways.co.uk/Property/SLY112190



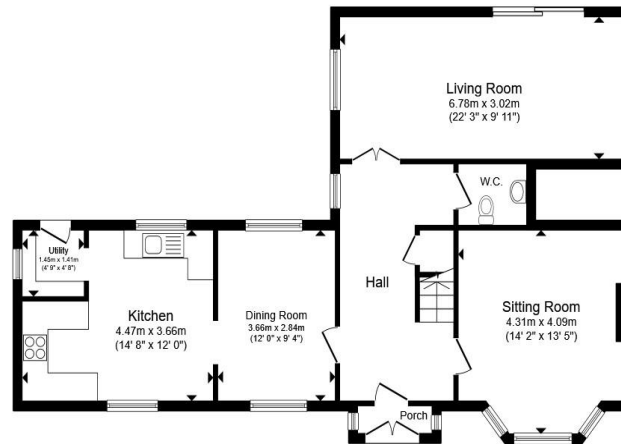
welcome to

Haslucks Green Road, Shirley Solihull

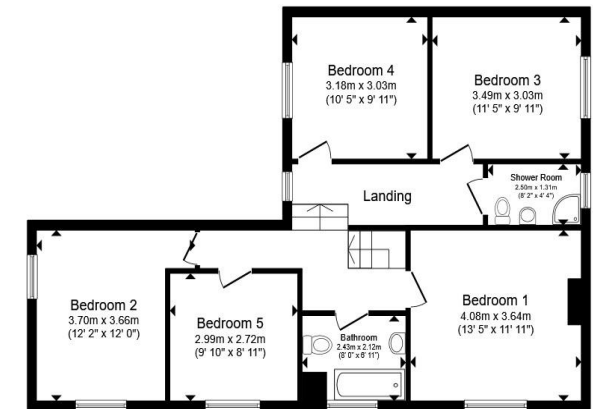
- 5 Bedrooms
- 3 Reception Rooms
- Spacious rooms throughout
- Detached
- Side garage

Tenure: Freehold EPC Rating: E
Council Tax Band: F

£600,000



Ground Floor



First Floor

Total floor area 158.6 m² (1,707 sq.ft.) approx

This floor plan is for illustrative purposes only. It is not drawn to scale. Any measurements, floor areas (including any total floor area), openings and orientation are approximate. No details are guaranteed, they cannot be relied upon for any purpose and they do not form part of any agreement. No liability is taken for any error, omission or misstatement. A party must rely upon its own inspection(s). Powered by www.propertybox.io



view this property online shipways.co.uk/Property/SLY112190



Property Ref:
SLY112190 - 0005

1. MONEY LAUNDERING REGULATIONS Intending purchasers will be asked to produce identification documentation at a later stage and we would ask for your co-operation in order that there is no delay in agreeing the sale. 2. These particulars do not constitute part or all of an offer or contract. 3. The measurements indicated are supplied for guidance only and as such must be considered incorrect. Potential buyers are advised to recheck measurements before committing to any expense. 4. We have not tested any apparatus, equipment, fixtures or services and it is in the buyers interest to check the working condition of any appliances. 5. Where an EPC, or a Home Report (Scotland only) is held for this property, it is available for inspection at the branch by appointment. If you require a printed version of a Home Report, you will need to pay a reasonable production charge reflecting printing and other costs. 6. We are not able to offer an opinion either written or verbal on the content of these reports and this must be obtained from your legal representative. 7. Whilst we take care in preparing these reports, a buyer should ensure that his/her legal representative confirms as soon as possible all matters relating to title including the extent and boundaries of the property and other important matters before exchange of contracts.



0121 744 4595



shirley@shipways.co.uk



208 Stratford Road, Shirley, SOLIHULL, West Midlands, B90 3AG



shipways.co.uk