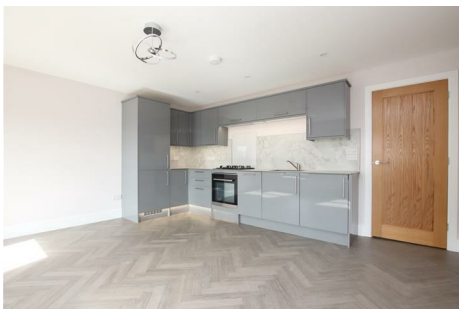




ASPIRE

— TO MOVE —



High Street, Timsbury, Bath, BA2

Video and physical viewings available. Aspire presents this two bedroom flat available in Timsbury High Street which is offered unfurnished and available end of March 2026

The flat is located in Timsbury, a friendly and attractive village in North East Somerset, it is a civil parish and lies around 8 miles south-west of Bath and 12 miles from Bristol.

The village maintains a pre-school and primary school and a village hall named, The Conygre hall. The hall is used for a number of events including village meetings, antique fairs and flower shows. Other amenities include a GP practice, Pharmacy Health food shop, and convenience stores. It also features a play park, tennis/netball courts, and is home to the Bowls club.

£1,300 PCM

High Street, Timsbury, Bath, BA2

- Second Floor Flat
- Allocated parking space
- Available from March 2026
- Modern apartment
- Village setting
- EPC: Rating C
- Two bedrooms
- Council tax band: A - £1,544.37
- Holding deposit - one weeks worth of rent - £300

Video and physical viewings available. Second floor, two bedroom flat available on Timsbury High Street which is offered unfurnished and available late March 2026.

The flat is located in Timsbury, a friendly and attractive village in North East Somerset, it is a civil parish and lies around 8 miles south-west of Bath and 12 miles from Bristol.

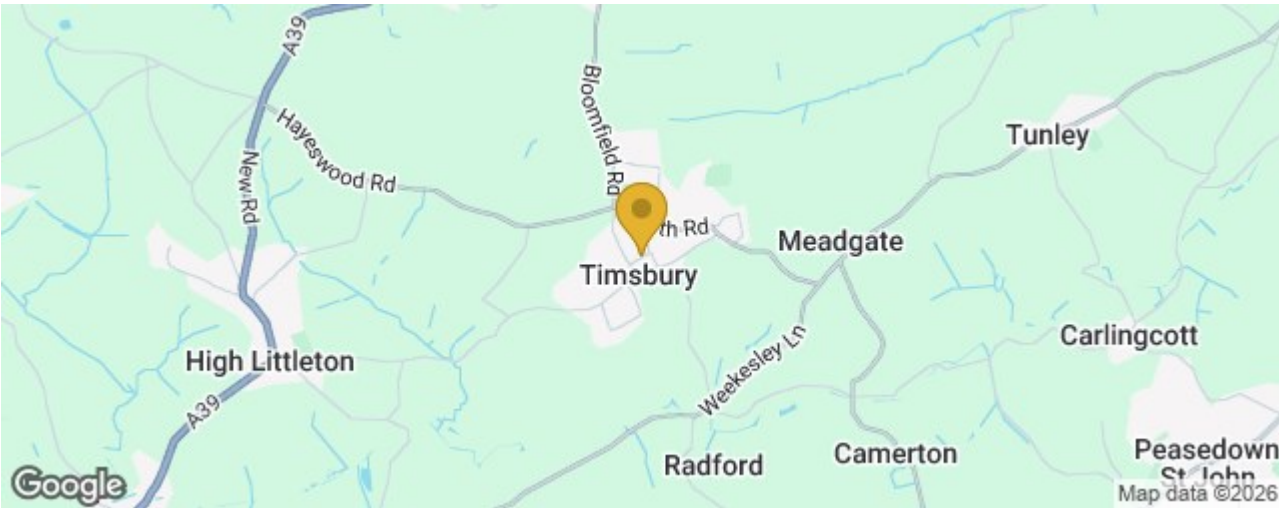
The village maintains a pre-school and primary school and a village hall named, The Conygre hall. The hall is used for a number of events including village meetings, antique fairs and flower shows. Other amenities include a GP practice, Pharmacy Health food shop, and convenience stores. It also features a play park, tennis/netball courts, and is home to the Bowls club.

The flat is located on the second floor and consists of an open plan kitchen, living, dining room with base and wall units, cooker, gas hob, integrated fridge/freezer, slimline dishwasher and washing machine. There are two bedrooms, both of which are doubles. The shower room has shower, WC and sink.

The flat is available for occupation from the end of March and features one allocated parking space and a video intercom system. The flat is offered unfurnished and would best suit a single professional or couple.

*The water for the property is on a split communal meter. You will be provided with a bill allocated to your flat by the landlord and pay directly back.

Council tax band: A - £1,544.37





FIRST FLOOR
513 sq.ft. (47.7 sq.m.) approx.



HIGH STREET, TIMSBURY, BA2

TOTAL FLOOR AREA : 513 sq.ft. (47.7 sq.m.) approx.

Whilst every attempt has been made to ensure the accuracy of the floorplan contained here, measurements of doors, windows, rooms and any other items are approximate and no responsibility is taken for any error, omission or mis-statement. This plan is for illustrative purposes only and should be used as such by any prospective purchaser. The services, systems and appliances shown have not been tested and no guarantee as to their operability or efficiency can be given.
Made with Metropix ©2023

These particulars, whilst believed to be accurate are set out as a general outline only for guidance and do not constitute any part of an offer or contract. Intending purchasers should not rely on them as statements of representation of fact, but must satisfy themselves by inspection or otherwise as to their accuracy. No person in this firms employment has the authority to make or give any representation or warranty in respect of the property.

