



112 Hayes Apartment, The Hayes, CF10 1BL

Cardiff

Fixed Price £195,000

112 Hayes Apartments

If arriving by train at Central Station. Walk through Central Plaza, towards Saint Mary Street. Walk through The Royal Arcade onto The Hayes. The entrance to the development is situated between Starbucks and Laings The Jewellers.

What3words: remote.arena.club

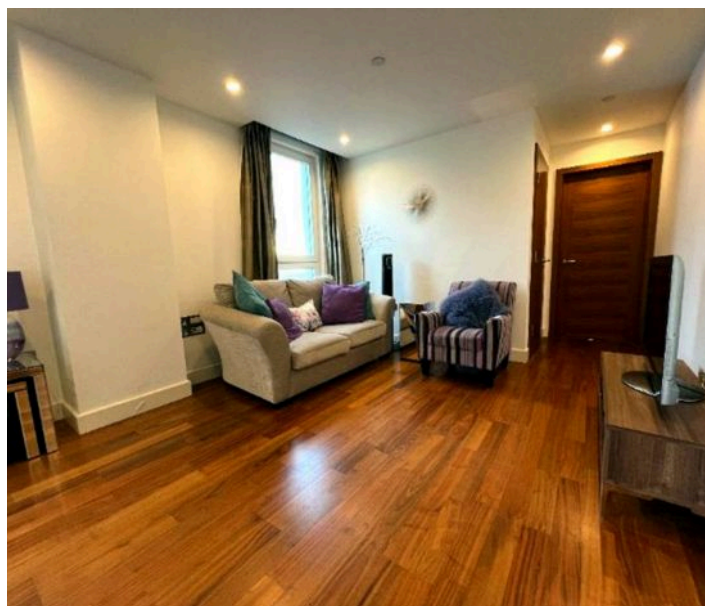
City centre living at its best. This beautifully presented, one double bedroom, sixth floor apartment is situated in the exclusive Hayes development in the heart of Cardiff.

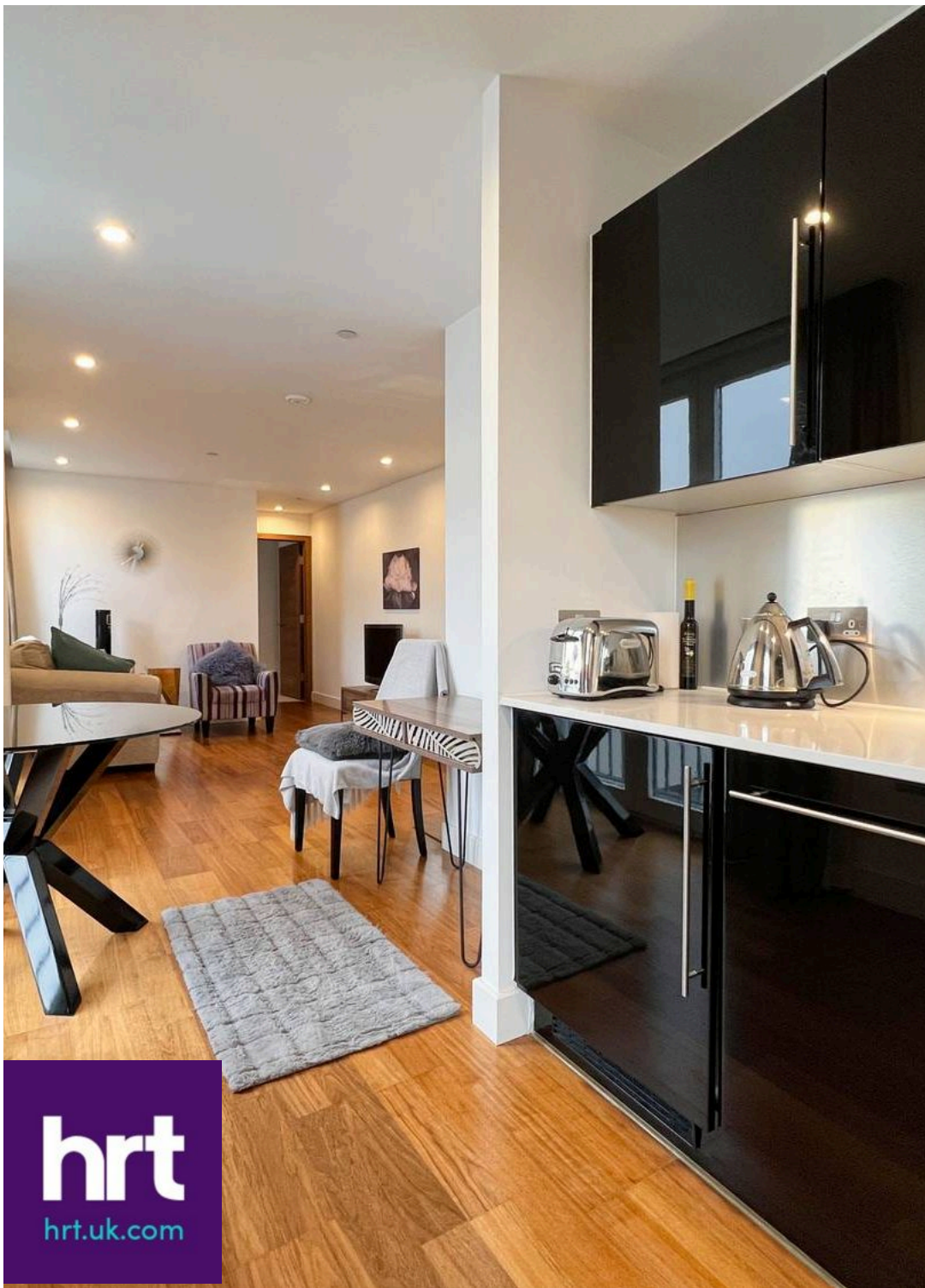
Council Tax band: E

Tenure: Leasehold

EPC Energy Efficiency Rating: C

EPC Environmental Impact Rating: B





112 Hayes Apartments

This light and airy, one double bedroom, sixth floor apartment is situated within the exclusive Hayes development in the heart of Cardiff city centre, it offers beautifully presented accommodation throughout.

The location offers city centre living at its very best, with shops, bars, restaurants, theatres and other attractions on your door step. It is ideal for young professionals, retirees, or persons looking for a city bolt hold.

Accessed from The Hayes, the secure communal hallways are immaculately kept and have stair and lift access to the sixth floor.

The light and airy apartment has tall windows in a southerly direction enjoying the sun throughout the day. All windows have custom made blinds fitted.

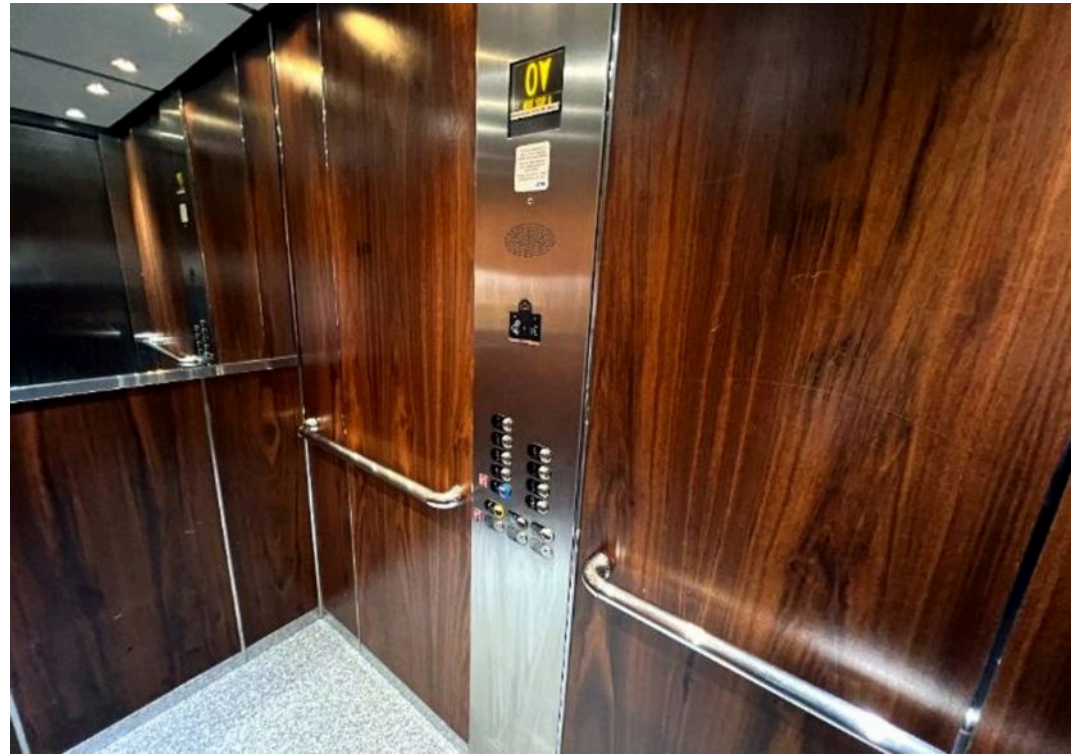
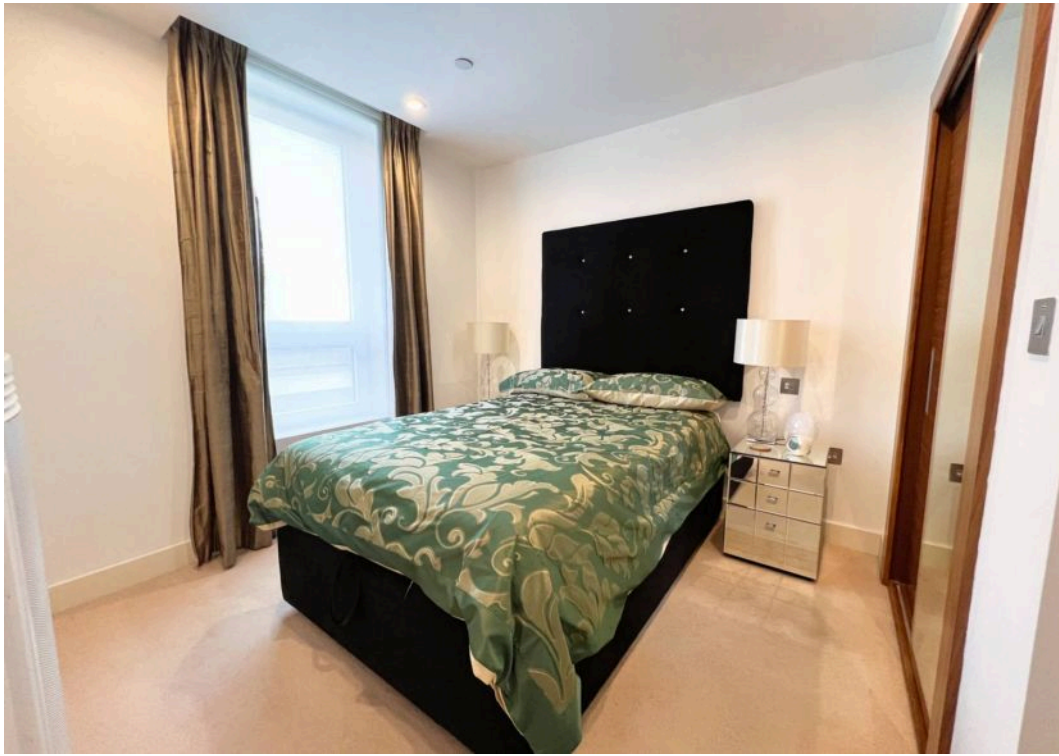
The entrance HALLWAY with cloaks storage cupboard off, has high-quality, walnut affect laminate wood flooring, which continues throughout the living accommodation.

The open plan KITCHEN/DINING/LIVING ROOM has two windows plus French door leading to a Juliette style balcony which overlooks the communal courtyard gardens below. Within the kitchen is a fitted range of high gloss, black, base and wall-mounted units with integrated appliances to remain.

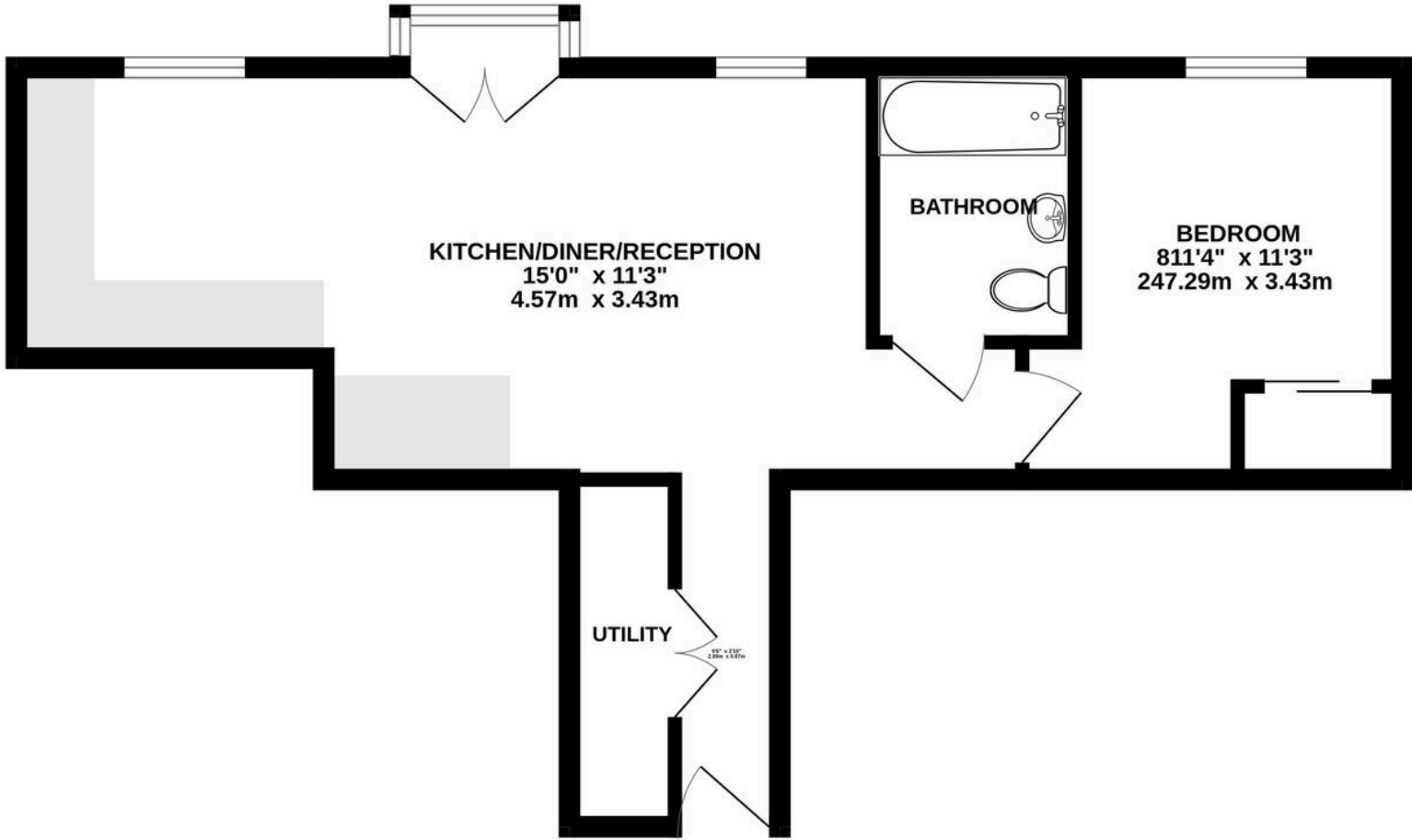
The DOUBLE BEDROOM has built-in wardrobe cupboards with fitted hanging and shelf space.

The FAMILY BATHROOM with white three-piece suite includes a panelled bath with mains power shower over. The room has full tiling to floor and walls, wall-mounted display shelving, chrome heated towel rail and fitted mirrors.

Parking: Residence of The Hayes have discounted parking rates, in the neighbouring St Davids shopping centre car park.



GROUND FLOOR
459 sq.ft. (42.6 sq.m.) approx.



TOTAL FLOOR AREA : 459 sq.ft. (42.6 sq.m.) approx.

Whilst every attempt has been made to ensure the accuracy of the floorplan contained here, measurements of doors, windows, rooms and any other items are approximate and no responsibility is taken for any error, omission or mis-statement. This plan is for illustrative purposes only and should be used as such by any prospective purchaser. The services, systems and appliances shown have not been tested and no guarantee as to their operability or efficiency can be given.
Made with Metropix ©2026





hrt
hrt.uk.com

Herbert R Thomas

H R Thomas Ltd, Unit 11-12 - CF10 4AJ

02922671555 • cardiff@hrt.uk.com • www.hrt.uk.com/

