

PROPERTY AGENTS

**JP**Knight



Toweridge, Wycombe Road, Stokenchurch, HP14 3RG



## Toweridge, Wycombe Road, Stokenchurch

A well-presented 4-bedroom detached family home situated in the sought after village of Stokenchurch offering spacious and versatile accommodation throughout, together with a generous garden, garage and large frontage.

The property is located in the heart of the village close to local shops and amenities. Easy access to the A40 and M40 and a short distance away from the town of High Wycombe.

## Tenure - Freehold

The property is entered via a welcoming entrance hall, with a convenient cloakroom/wc and useful understairs storage cupboard.

There is an lovely kitchen/diner which is fitted with a modern range of wall and base units and benefits from a breakfast bar, integrated appliances, including an oven, induction hob, fridge freezer, dishwasher and washing machine, one and a half bowl sink with drainer, and two windows to the side allowing for plenty of natural lights.





The spacious living/dining room provides a large flexible reception space, ideal for both everyday family life and entertaining, with a striking glazed wall and double doors opening directly on the garden.

Upstairs, the property offers four good sized bedrooms, two of which benefit from built in storage, together with additional storage from the landing. The family bathroom is fitted with a three-piece suite comprising a bathroom with shower over and shower screen, wash hand basin and w.c.

Outside, the rear garden is a lovely feature of the home, with access from the house onto a large, decked seating area, leading onto a lawned garden. A patio stepping stone pathway extends from the eating area to the garage, creating an attractive and practical outdoor space.

Garage 16'5 x 12'8, window to the front and back with door access to the garden.

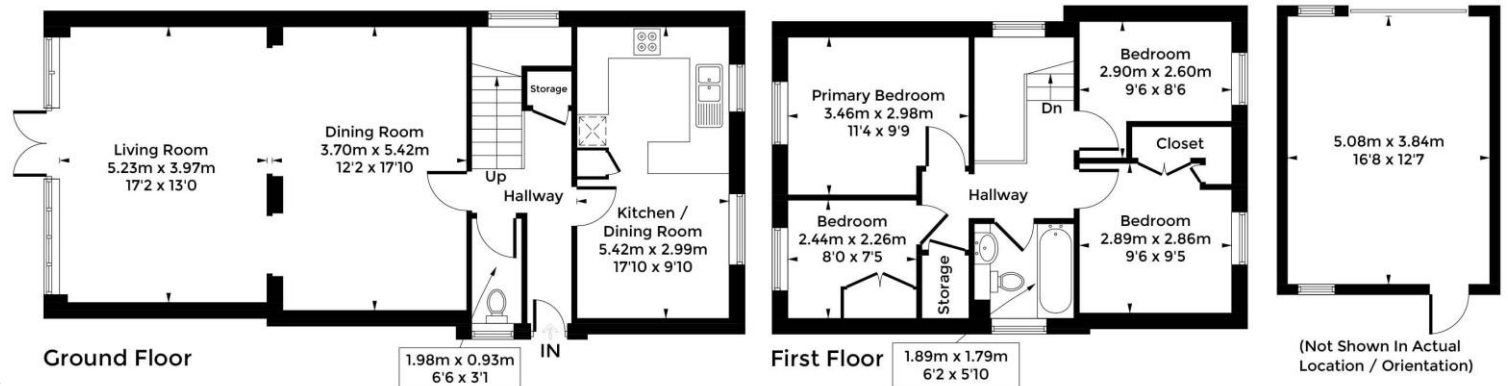
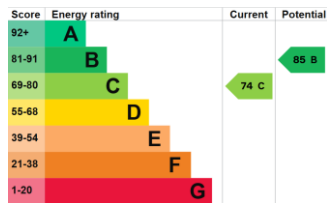
To the front, the property enjoys a large expanse of lawn, enhancing its kerb appeal and setting it back nicely from the road.

There is a small private road to the rear of the property which allows access to the garage and parking.



Directions, from our offices turn right High Street, continue onto The Street, go through 1 roundabout, at the round about, take the 3rd exit onto Crowmarsh Hill, continue to follow A4130 to Henley, turn left onto Huntercombe End, turn left onto B481, turn right onto Patemore Lane, turn left onto Nettlebed Henley, turn left onto Stokenchurch Chinnor, turn right to Butterly Road/A40 continue to follow A40, turn left onto Oxford Rd/A40 continue on to Wycombe Road and the property is located on the left hand side just after Pigeon Farm Road.

Approximate Gross Internal Area = 116.1 sq m / 1249 sq ft  
 Outbuilding = 19.6 sq m / 211 sq ft  
 Total = 135.7 sq m / 1460 sq ft



**Important Information:** All measurements are approximate. We have not tested any appliances or services within this property and cannot verify them to be in working order or within the vendors/s ownership. We have not verified the tenure of the property, type of construction or the condition thereof. Intending purchasers should make appropriate enquiries through their own solicitors and surveyor etc, prior to exchange of contract.

