

## Hotham Road, SW19

£625,000

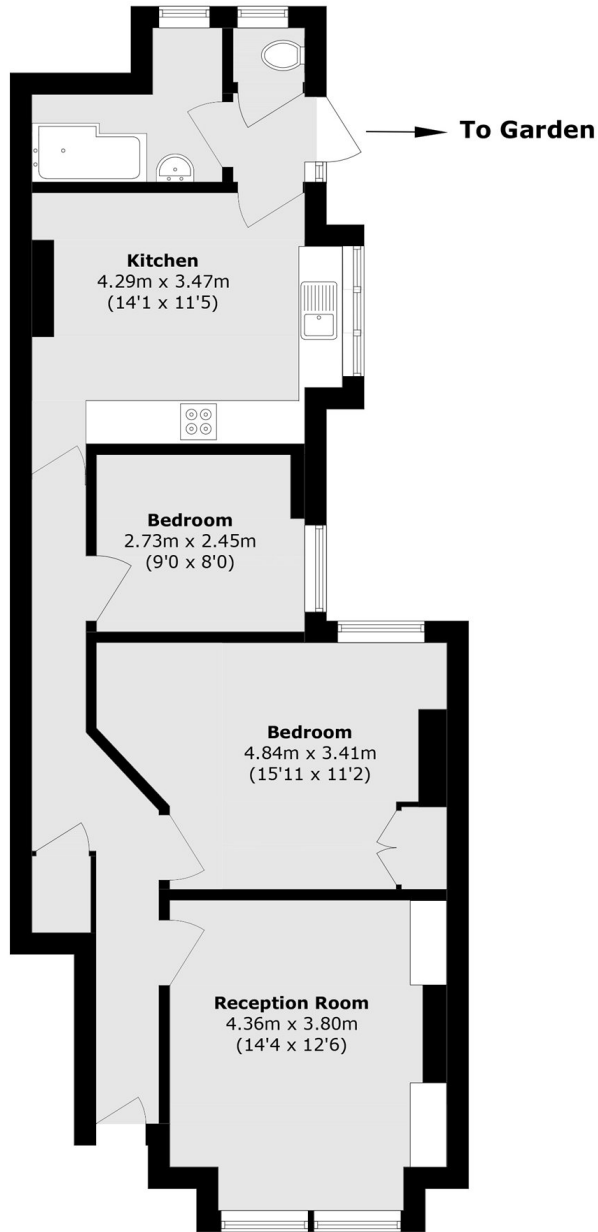
A two double bedroom, ground floor purpose built maisonette. The property is presented in superb condition, with a large private garden and a share of freehold.

Hotham Road is a popular and quiet road between Wimbledon and Colliers Wood. Both Wandle Park and Haydons Recreation Grounds are nearby, with Northern Line and Thames Link just a stone's throw away.

### Features

- Two Double Bedrooms
- Large Private Garden
- Quiet Tree Lined Street
- Share Of Freehold
- Victorian Maisonette
- Near Northern Line

# Hotham Road, London, SW19



Total area (approx.): 71.1 sq. m (765.3 sq. ft)