



Cheltenham Close

, Bedworth, CV12 8TF

Offers over £375,000

* Impressive four-bedroom detached family home located in the desirable area of Cheltenham Close, Bedworth * Nestled in a peaceful cul-de-sac on a generous corner plot, this property offers a perfect blend of comfort and style, making it an ideal choice for families.

Upon entering, you are welcomed by a spacious entrance hall that leads to three well-appointed reception rooms, including a bright and airy lounge, a cosy sitting room, and a versatile kitchen diner, perfect for family gatherings and entertaining guests. The ground floor also features a convenient cloakroom, a delightful conservatory that invites natural light, and a gym area, providing ample space for relaxation and fitness.

The first floor boasts four generously sized bedrooms, including a master suite complete with an en suite shower room, ensuring privacy and convenience. A further family bathroom serves the additional bedrooms, making this home both functional and accommodating for family life.

Externally, the property benefits from well-maintained gardens to both the front and rear, offering a lovely outdoor space for children to play or for hosting summer barbecues. With double glazing and gas central heating, this home ensures warmth and comfort throughout

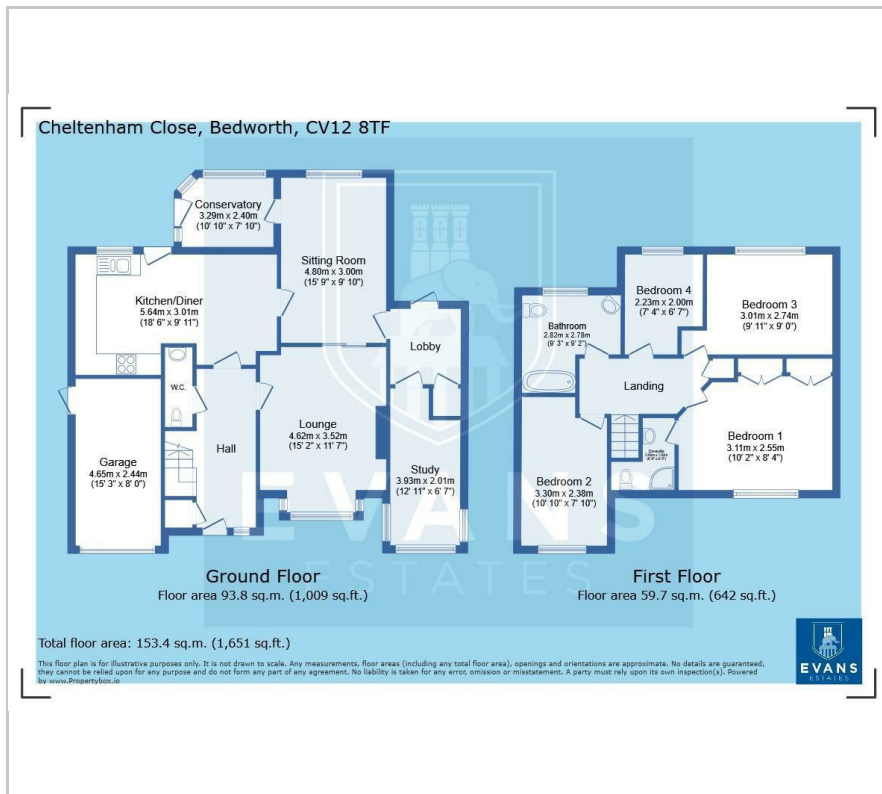
- Detached Family Home
- No Upward Chain
- Four Bedrooms
- Corner Plot

Viewing

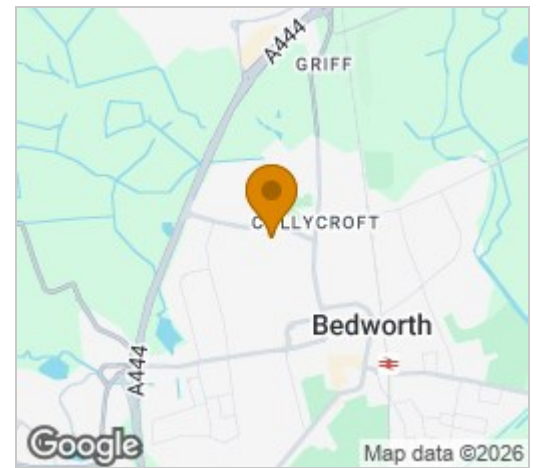
Please contact our Evans Estates Office on 02476333363 if you wish to arrange a viewing appointment for this property or require further information.



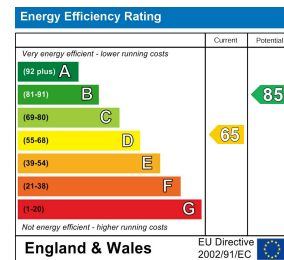
Floor Plan



Area Map



Energy Efficiency Graph



These particulars, whilst believed to be accurate are set out as a general outline only for guidance and do not constitute any part of an offer or contract. Intending purchasers should not rely on them as statements of representation of fact, but must satisfy themselves by inspection or otherwise as to their accuracy. No person in this firm's employment has the authority to make or give any representation or warranty in respect of the property.

47 Headington Avenue, Coventry, West Midlands, CV6 2GX

Tel: 02476333363 Email: info@evans-estates.co.uk <https://www.evans-estates.co.uk>