



TO LET

**Leigh Road,
Leigh-On-Sea SS9 1JA**

£1,650 PCM Deposit Required - £1,903 Council Tax Band - A

- Spacious Accommodation
- Three Double Bedrooms
- One Small Office Room
- Large Kitchen
- Gas Central Heating
- Great Central Location
- Close To All Shops & Bars
- Call Now To Arrange A Viewing

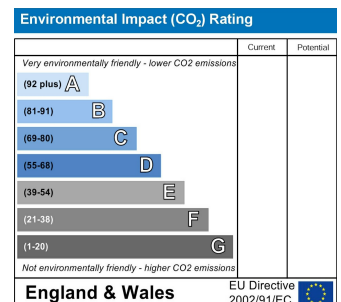
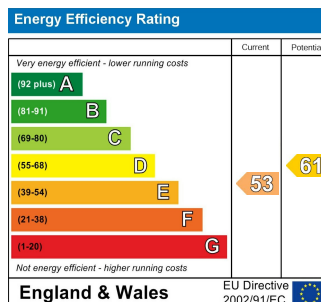
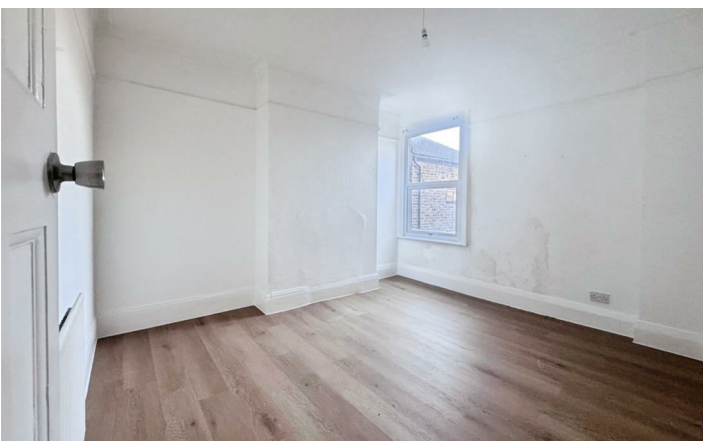
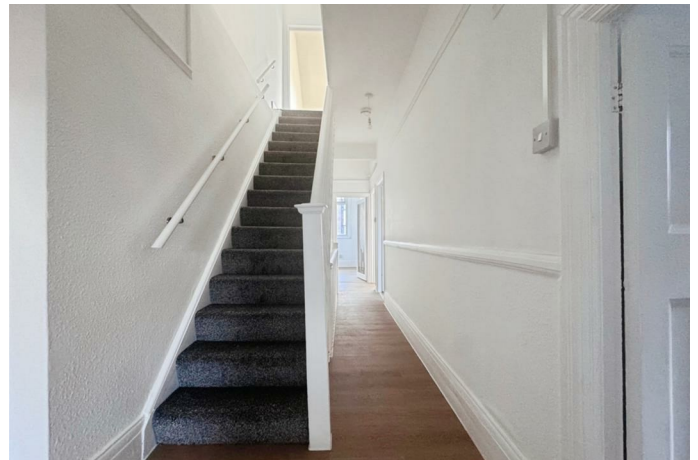
Appointmoor Rental
72 The Ridgeway, Chalkwell, Westcliff, Essex, SS0 8NU
T. 01702 719 966 W. appointmoor.co.uk

appointmoor

Description

THREE BEDROOM FIRST FLOOR FLAT LOCATED ABOVE THE POPULAR PUB "THE BROKER" IN LEIGH ROAD. The property is spacious throughout and all rooms are a good generous size. The first floor consists of a large lounge and double bedroom, a small office space, large kitchen and w/c with separate shower over the bath. The top floor offers two further double

bedrooms. Please note that live music is played in the pub on a Sunday and a quiz is held every Thursday where noise may be heard in the flat. Call now to arrange a viewing.



AGENTS NOTES: Every care has been taken with the preparation of these particulars, but complete accuracy cannot be guaranteed. If there is any point, which is of particular importance to you, please obtain professional confirmation. Alternatively, we will be pleased to check the information for you. All measurements quoted are approximate. Floor plans are not to scale. The Fixtures, Fittings & Appliances have not been tested and therefore no guarantee can be given that they are in working order. Photographs are reproduced for general information, and it cannot be inferred that any item shown is included in the sale.

VIEWINGS: BY APPOINTMENT ONLY