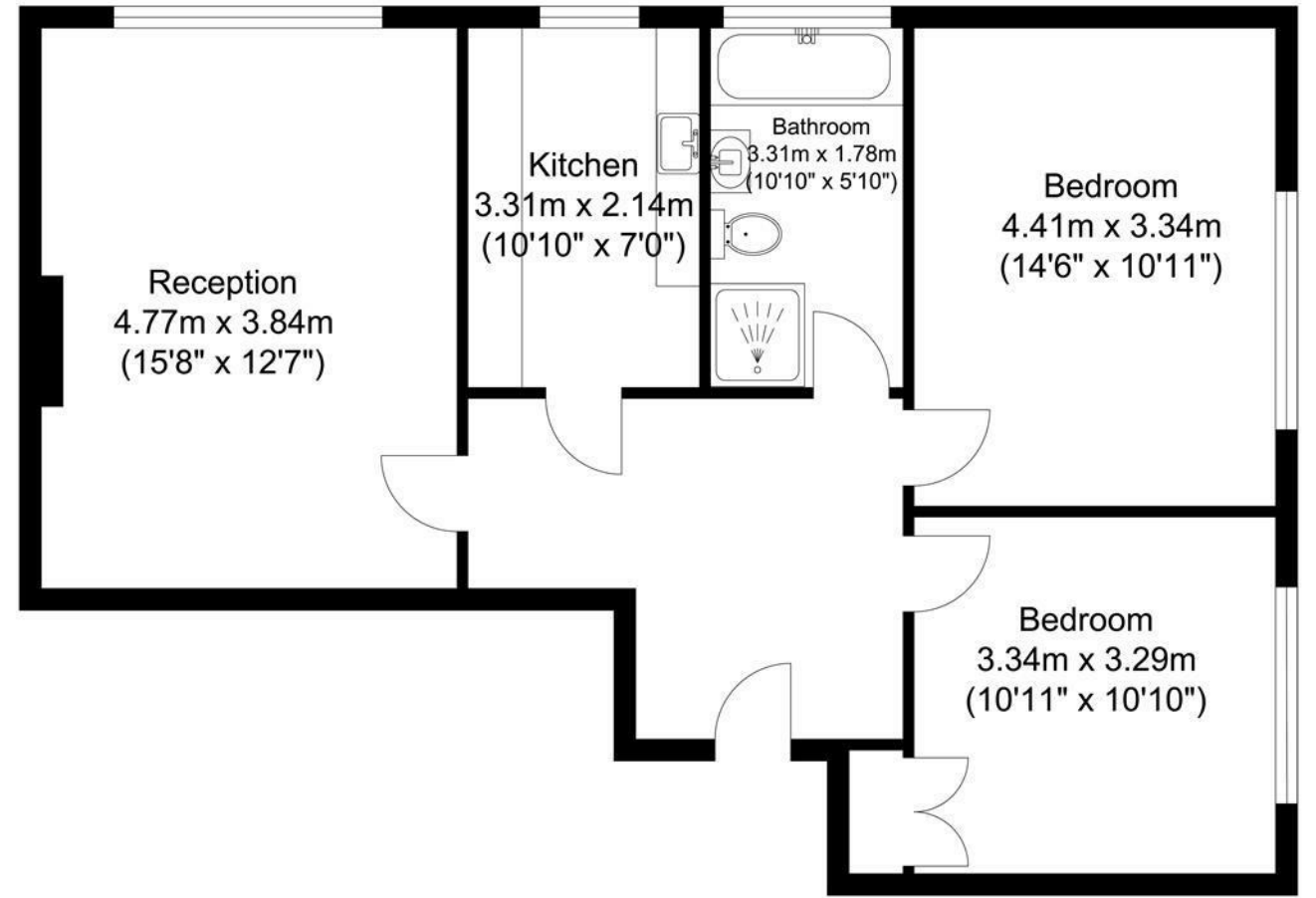
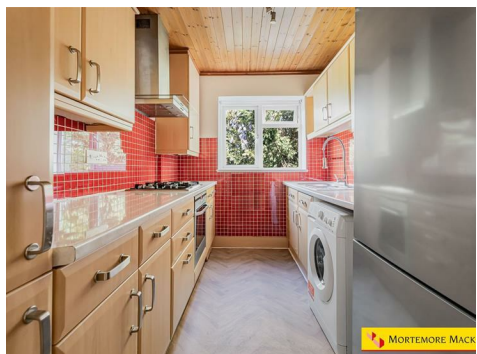


THE GREEN, N21 3NJ



£2,100 Per month

- FIRST FLOOR
- KITCHEN
- BATHROOM
- SET BEHIND ELECTRIC GATES
- WALKING DISTANCE TO STATION
- 2 DOUBLE BEDROOMS
- SPACIOUS LOUNGE
- OWN GARDEN
- WINCHMORE HILL GREEN LOCATION



Total Floor Area
Approximate Floor Area
775.00 sq. ft.
(72.00 sq. m)

Energy Efficiency Rating		
	Current	Potential
Very energy efficient - lower running costs		
(92 plus) A		
(81-91) B		
(69-80) C		
(55-68) D		
(39-54) E		
(21-38) F		
(1-20) G		
Not energy efficient - higher running costs		
England & Wales	EU Directive 2002/91/EC 