



**Yew Trees, Thorpe, Surrey, TW20 8TP**

**£455,000 F/H**



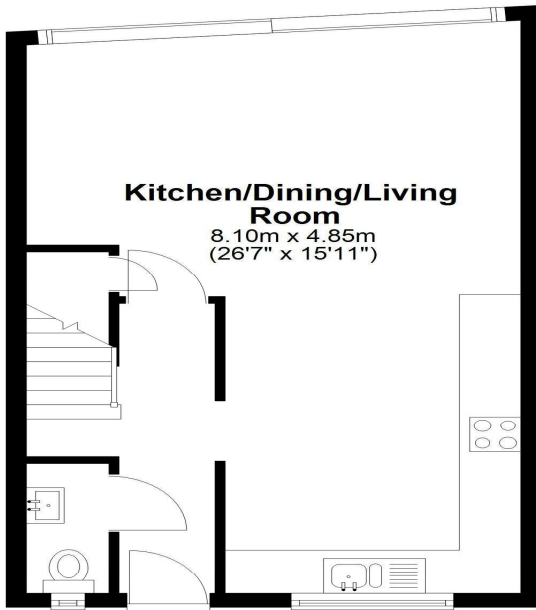
A well presented terraced home, situated in a quiet mews, close to village shop and pub. This spacious property offers three bedrooms, large lounge, open plan kitchen/diner, two bathrooms and downstairs cloakroom. Externally, there is a secluded 30ft (9.14m) garden backing onto a field and access to garage in block. Both Egham and Virginia Water are a mile away. Local school and recreation park are a few minutes' walk. No onward chain.

# Yew Trees, Thorpe, Surrey, TW20 8TP

## FLOOR PLAN

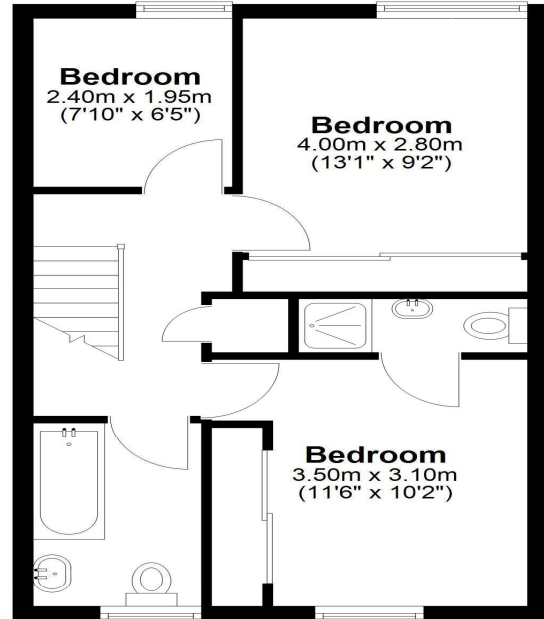
### **Ground Floor**

Approx. 38.4 sq. metres (413.8 sq. feet)



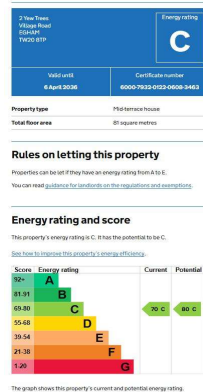
### **First Floor**

Approx. 40.3 sq. metres (433.9 sq. feet)



Total area: approx. 78.7 sq. metres (847.6 sq. feet)

## EPC



### REAR GARDEN:

30ft (9.14m) secluded walled garden

### GARAGE:

Single garage in block

### COUNCIL TAX BAND:

D - Runnymede Borough Council

### VIEWINGS:

By appointment with the clients selling agents,  
Nevin & Wells Residential on 01784 437 437 or visit  
[www.nevinandwells.co.uk](http://www.nevinandwells.co.uk)



All measurements are approximate. Nevin & Wells Residential have not tested any systems or appliances.