

Apartment 17, £175,000

(Other charges apply)

RICHMOND
VILLAGES

Part of Bupa



1



1



EPC - C



1 bedroom first floor apartment

Nestled on the South side of the Courtyard close to the Koi Carp pond and amongst flower borders, No 17 is a bright, sunny beautifully presented apartment. The lounge and bedroom both face Southwards, whilst the kitchen window overlooks the gardens of the Courtyard. The apartment is situated close to the main village centre and village facilities.

Specification

- Spacious and bright living room with south-facing windows.. Modern remote controlled electric fire with feature surround.
- Modern fitted kitchen with built-in appliances, overlooking the courtyard.
- Double bedroom with built in wardrobe and windows with Southerly views.
- Contemporary shower room with a fitted vanity unit with under cupboard and inset hand basin.
- Central heating radiators in all rooms. TV and satellite points*.
- Well stocked flower borders and lawns maintained by the Village Gardeners.
- Allocated parking space for one car.



*Satellite subscription not included.

Important Notice: These particulars are intended to give a fair and substantially correct overall description. Other fees and charges apply, please contact the Village Advisers for further details. Properties are sold on a 125 year lease and this property has X years remaining.

01270 629 080

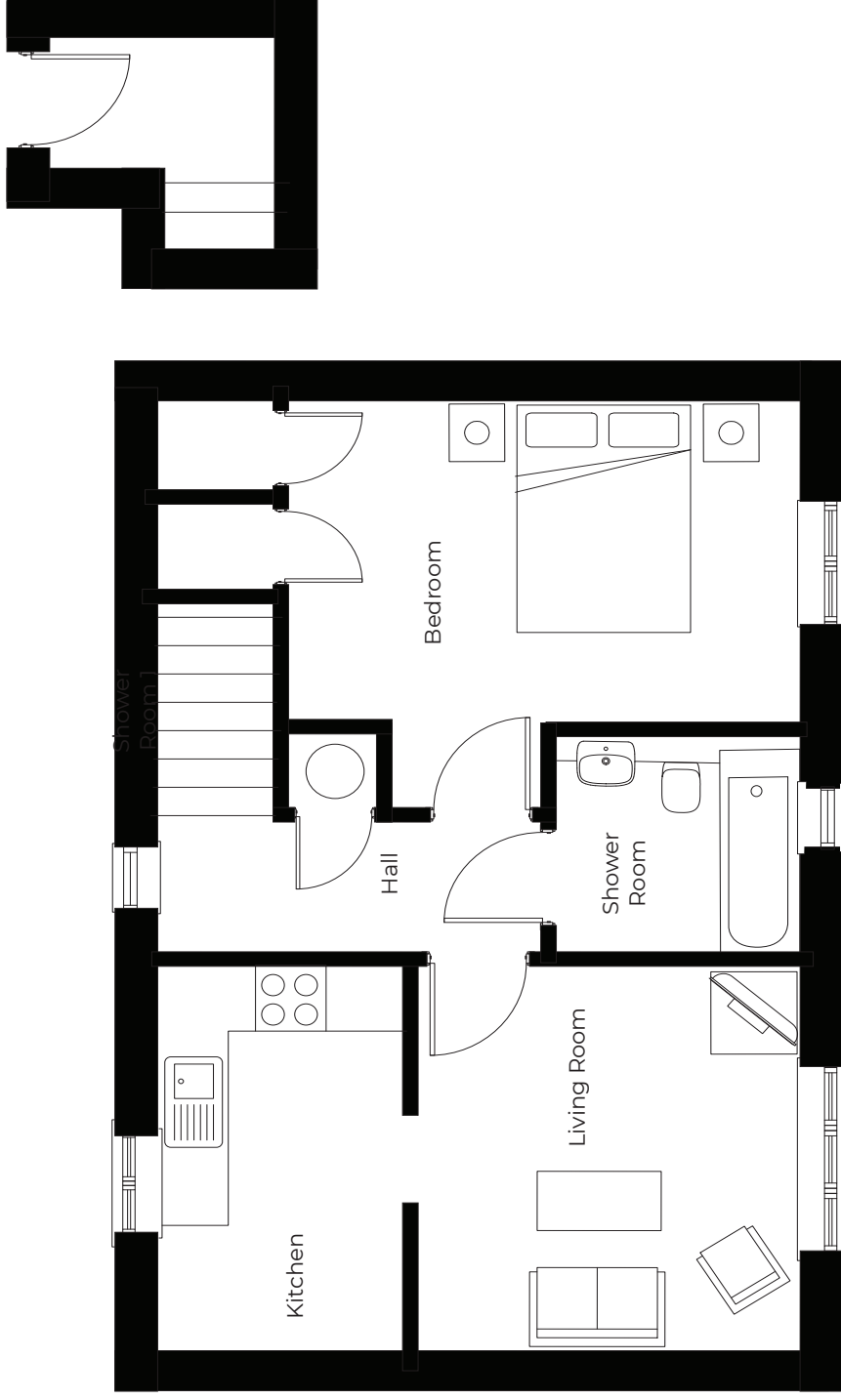
nantwich@richmond-villages.com

Richmond Villages Nantwich,
St Joseph's Way, Nantwich, Cheshire CW5 6LZ

Apartment 17

First Floor

- Kitchen**
11'5" x 6'8"
- Living Room**
11'4" x 10'8"
- Bedroom**
14'3" x 12'1"
- Bathroom**
11'6" x 10'9"



These particulars are intended to give a fair and substantially correct overall description.

Measurements have been taken at 1500mm skirting height.

All dimensions are approximate. Bedroom measurements include the wardrobe if applicable. Room measurements include bay windows if applicable.

Furniture layout is to give an indicative impression. Although all efforts have been made to ensure its accuracy at time of print dimensions, fixtures, fittings, finishes and specifications are subject to change without notice.

The properties are sold unfurnished.

