



3



1



2



B

DavidJames
the estate agent

Wisteria Road, Burton Joyce, Nottingham, NG14 5JA

£1,200 Per Calendar Month

About This Property

A modern town house on the Persimmon Homes 'Rivendell' development. The accommodation is set out over three floors and is immaculately presented throughout. The ground floor has a well-proportioned lounge, inner hallway, cloakroom/Wc and a kitchen/diner with Quartz marble worktops, integrated appliances and French doors that open up into the rear garden. The first floor has two double bedrooms and a bathroom/Wc with white suite and shower over the bath. The second floor hosts Bedroom One which has fitted storage and a fully-tiled ensuite shower room with walk-in enclosure and a rain-forest style shower fitting. Outside, the property benefits from off-road parking for two cars to the front of the property and a private, low maintenance rear garden. There are ample transport links and amenities close by, including Victoria Retail Park, a Nature Reserve and good schools.

TENANCY DETAILS

Available From: 28th July 2026

Furnishing: Unfurnished

EPC Rating: B

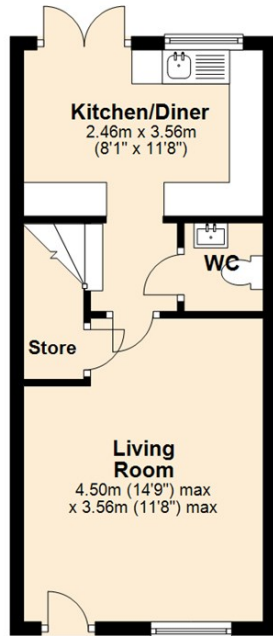
Council Band: C

- Modern three-storey townhouse
- Three bedrooms
- Well-proportioned living room
- Modern kitchen diner with Quartz marble worktops and integrated appliances
- Two bath/shower rooms & ground floor Wc
- UPVC double glazing
- Combination gas central heating
- Low maintenance rear garden
- 2x off-street parking spaces
- Ample transport links & amenities close by, including Victoria Retail Park

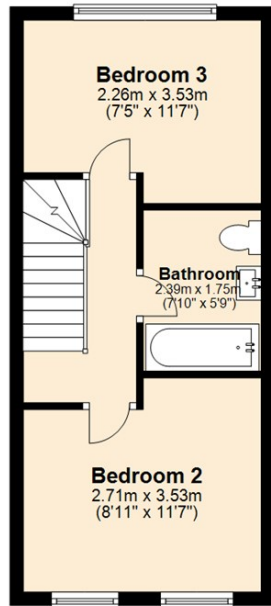




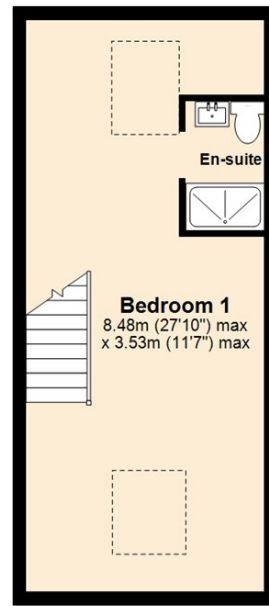
Ground Floor
Approx. 30.2 sq. metres (324.5 sq. feet)



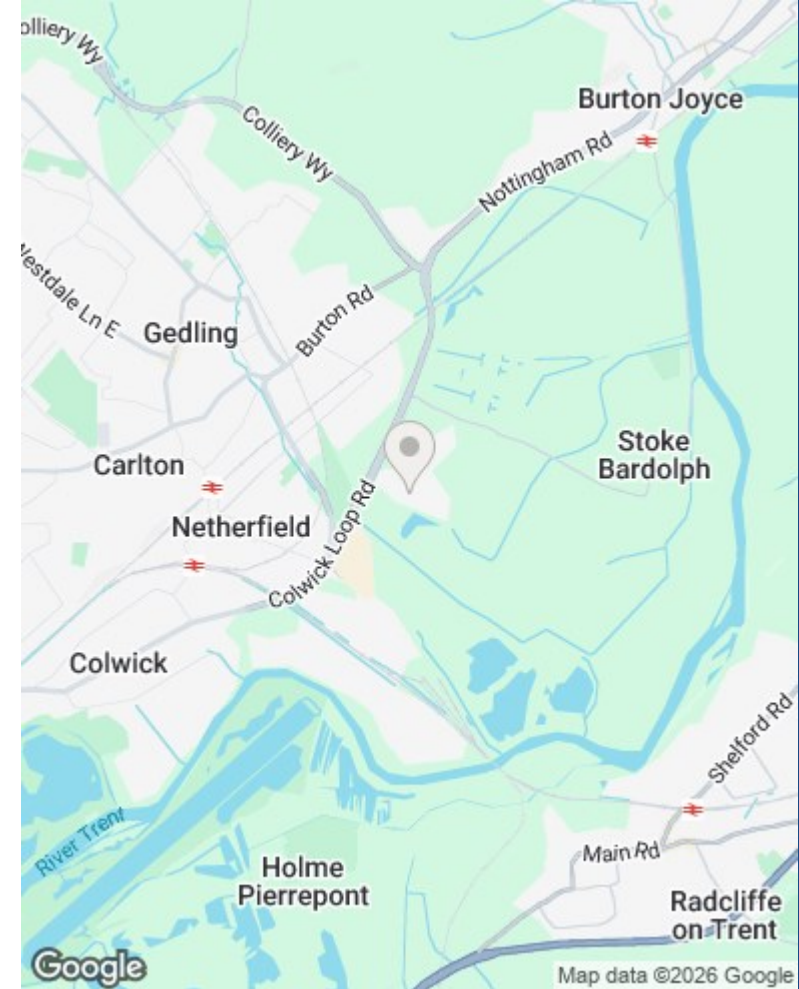
First Floor
Approx. 30.1 sq. metres (324.4 sq. feet)



Second Floor
Approx. 29.7 sq. metres (319.3 sq. feet)



Total area: approx. 90.0 sq. metres (968.2 sq. feet)



These particulars are produced in good faith, are set out as a general guide only and do not constitute any part of a contract. No person in the employment of David James Estate Agents Ltd has any authority to make any representation whatsoever in relation to the property. All services, together with electrical fittings or fitted appliances have NOT been tested. All the measurements given in the details are approximate. Floor plans are for illustrative purposes only and are not drawn to scale. The position and size of doors, windows, appliances and other features are approximate only. The photographs of this property have been taken with a 10mm wide-angle lens. No responsibility can be accepted for any loss or expense incurred in viewing. If you have a property to sell you may wish to take advantage of our free valuation service. David James Estate Agents have established professional relationships with third-party suppliers for the provision of services to Clients. As remuneration for this professional relationship, the agent receives referral commission from the third-party company. David James Estate Agents receives the following commission from each third party supplier on a per referral basis: W A Barnes Ltd: £60 including VAT. All Moves UK Ltd: 18% including VAT of the invoice total (£107 including VAT average). MoveWithUs Limited: £188 including VAT (average).

Council Tax Band: C
Gedling Borough Council

DavidJames
the estate agent

David James Estate Agents
45b Plains Road, Mapperley, Nottingham, NG3 5JU
t: 0115 962 4213 e: lettings@david-james.com

