



The Sherwood, plot 118



The Sherwood, plot

Abbotsham Park, Clovelly Road, Bideford, EX39
3011
Bideford Town Centre 2 miles Barnstaple 7 miles Instow 6 miles

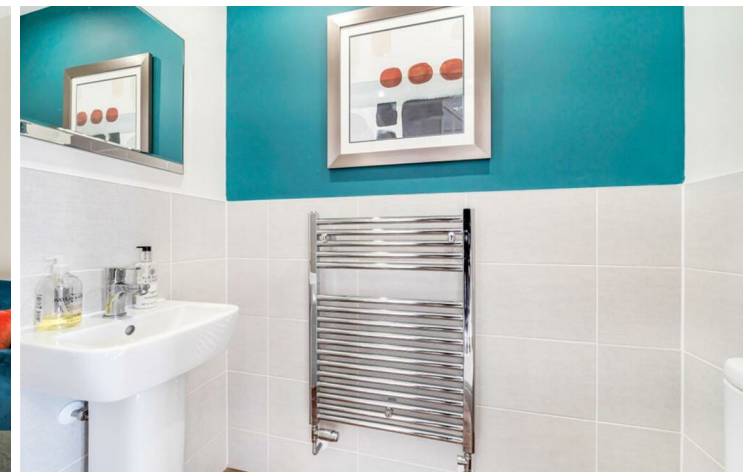
The Sherwood is a thoughtfully designed 3 bedroom detached home offering a bright, modern layout perfect for couples, young families, or anyone looking for a practical and stylish space.

- 3 bedroom detached
- Utility room
- Family bathroom
- Single garage
- EPC TBC
- Open plan kitchen/dining area
- Bedroom 1 with ensuite
- 10 year warranty
- Freehold
- Council tax band TBC

Guide Price £324,995

SITUATION

Welcome to Abbotsham Park – coastal living in a lovely riverside town. Explore the modern new houses for sale in Bideford Devon, including a choice of two, three and four bedroom homes. Nestled between the North Devon National Landscape and the Hartland Devon Heritage Coast, Abbotsham Park is just minutes from the sea. Designed for modern life, each home comes with quality finishes and energy-saving features.



DESCRIPTION

The Sherwood opens its doors to family life, with the balance of an open-plan kitchen/dining room and a separate living room. That means a balance of family time and quiet time for you all to make the most of. Three bedrooms and two bathrooms mean calm mornings getting ready for school and work, and French doors to the garden mean a lovely place to start and end the day.

OUTSIDE

This home benefits from a single garage, 2 parking spaces and a private rear garden.

AGENT NOTES

Annual service charge will be payable. Some images may be CGI. Internal photos are provided to illustrate the high-quality finish and are taken from a similar property.

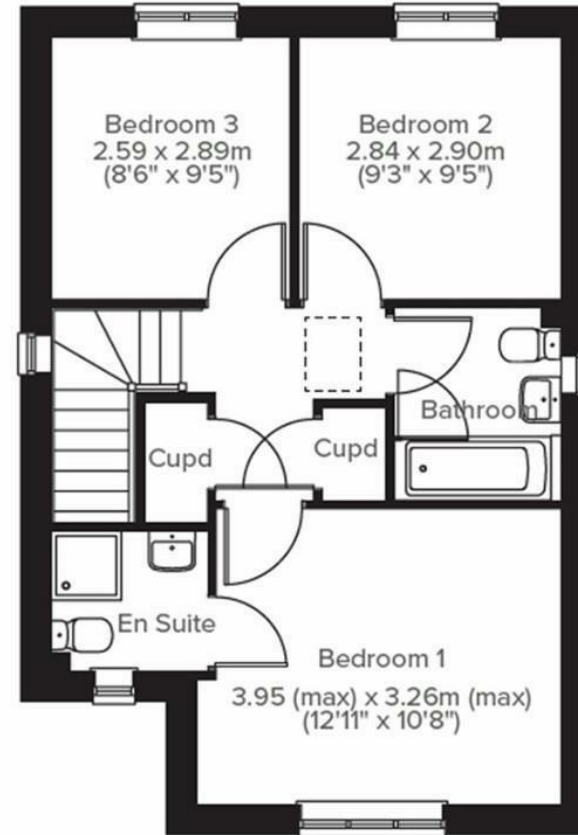
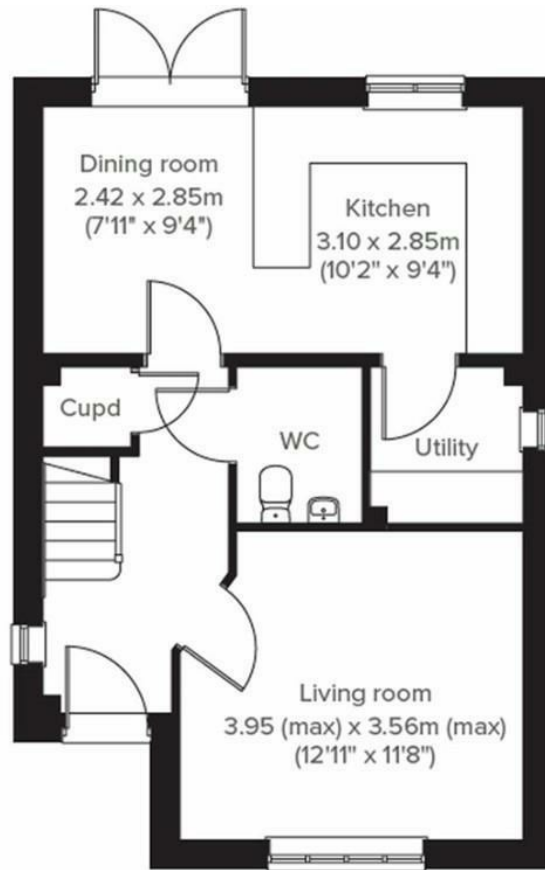
VIEWINGS

Please call the Stags Bideford office on 01237 425030.

DIRECTIONS

Abbotsham Park is situated off the A39 Atlantic Highway, on Clovelly Road.





IMPORTANT: Stags gives notice that: 1. These particulars are a general guide to the description of the property and are not to be relied upon for any purpose. 2. These particulars do not constitute part of an offer or contract. 3. We have not carried out a structural survey and the services, appliances and fittings have not been tested or assessed. Purchasers must satisfy themselves. 4. All photographs, measurements, floorplans and distances referred to are given as a guide only. 5. It should not be assumed that the property has all necessary planning, building regulation or other consents. 6. Whilst we have tried to describe the property as accurately as possible, if there is anything you have particular concerns over or sensitivities to, or would like further information about, please ask prior to arranging a viewing.



4 The Quay, Bideford, Devon, EX39 2HW

bideford@stags.co.uk

01237 425030



@StagsProperty

Cornwall | Devon | Somerset | Dorset | London