



*Jordan fishwick*

9 Kingsley House, 15 Newton Street, M1  
£925 Per Calendar Month



## Kingsley House Manchester M1 1HE

£925 Per Calendar Month




### The Property

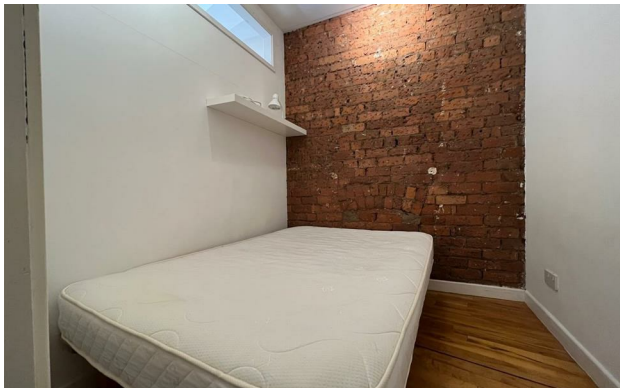
Available Now. Located in the heart of the Northern Quarter, this second floor, quirky one bedroom apartment/studio is perfect for those wanting a very central location. The flat itself boasts high ceilings and exposed brickwork and there is also a large separate kitchen. The living room is a good sized with large windows, there is a separate, sectioned off bedroom. There is a large bathroom with exposed columns and beams and a large storage cupboard utilised as a separate wardrobe. Furnished. No Parking, Council Tax Band B. EPC Rating D. No Pets allowed

**\*VIDEO OFFERS NOT ACCEPTED - PLEASE BOOK AN INPERSON VIEWING\***

- Available Now
- 1 bedroom
- City Centre location
- Close to Transport link
- Furnished
- Tax Band B
- EPC Rating D
- No Parking
- No Pets allowed



Energy Efficiency Rating		
	Current	Potential
Very energy efficient - lower running costs		
(92 plus) <b>A</b>		
(81-91) <b>B</b>		
(69-80) <b>C</b>		
(55-68) <b>D</b>	<b>63</b>	<b>65</b>
(39-54) <b>E</b>		
(21-38) <b>F</b>		
(1-20) <b>G</b>		
Not energy efficient - higher running costs		
<b>England &amp; Wales</b>	EU Directive 2002/91/EC 	





These particulars are believed to be accurate but they are not guaranteed and do not form a contract. Neither Jordan Fishwick nor the vendor or lessor accept any responsibility in respect of these particulars, which are not intended to be statements or representations of fact and any intending purchaser or lessee must satisfy himself by inspection or otherwise as to the correctness of each of the statements contained in these particulars. Any floorplans on this brochure are for illustrative purposes only and are not necessarily to scale.

Offices at: Offices at Chorlton, Didsbury, Disley, Hale, Glossop, Macclesfield, Manchester Deansgate, Manchester Whitworth Street, New Mills, Sale, Wilmslow and Withington