



3 Balcon Terrace

Palace Close



3 Balcon Terrace, Palace Close, St Saviour, JE2 7SH

Ideally located within walking distance to major schools and just a short way from town and all local amenities, yet tucked away from busy roads is this tastefully updated and decorated three bed property.

On the ground floor you will find a spacious lounge which leads through into a beautifully newly fitted kitchen, complete with a centre Island and breakfast bar. From the kitchen double doors lead out onto the low maintenance south facing garden currently laid with artificial lawn. Also contained on the ground floor is a toilet and a separate utility room.

Upstairs you will find three double bedrooms with the principle room having built in wardrobes. The house bathroom has been beautifully modernised and contains a shower over the bath.

Outside the front of the property is a small garage currently utilised as a gym and two designated parking spaces.

Early viewing is recommended to appreciate what this move in ready property has to offer.



3



1



1

Parish: St Saviour

Qualification: Qualified

Tenure: Freehold

Price £680,000



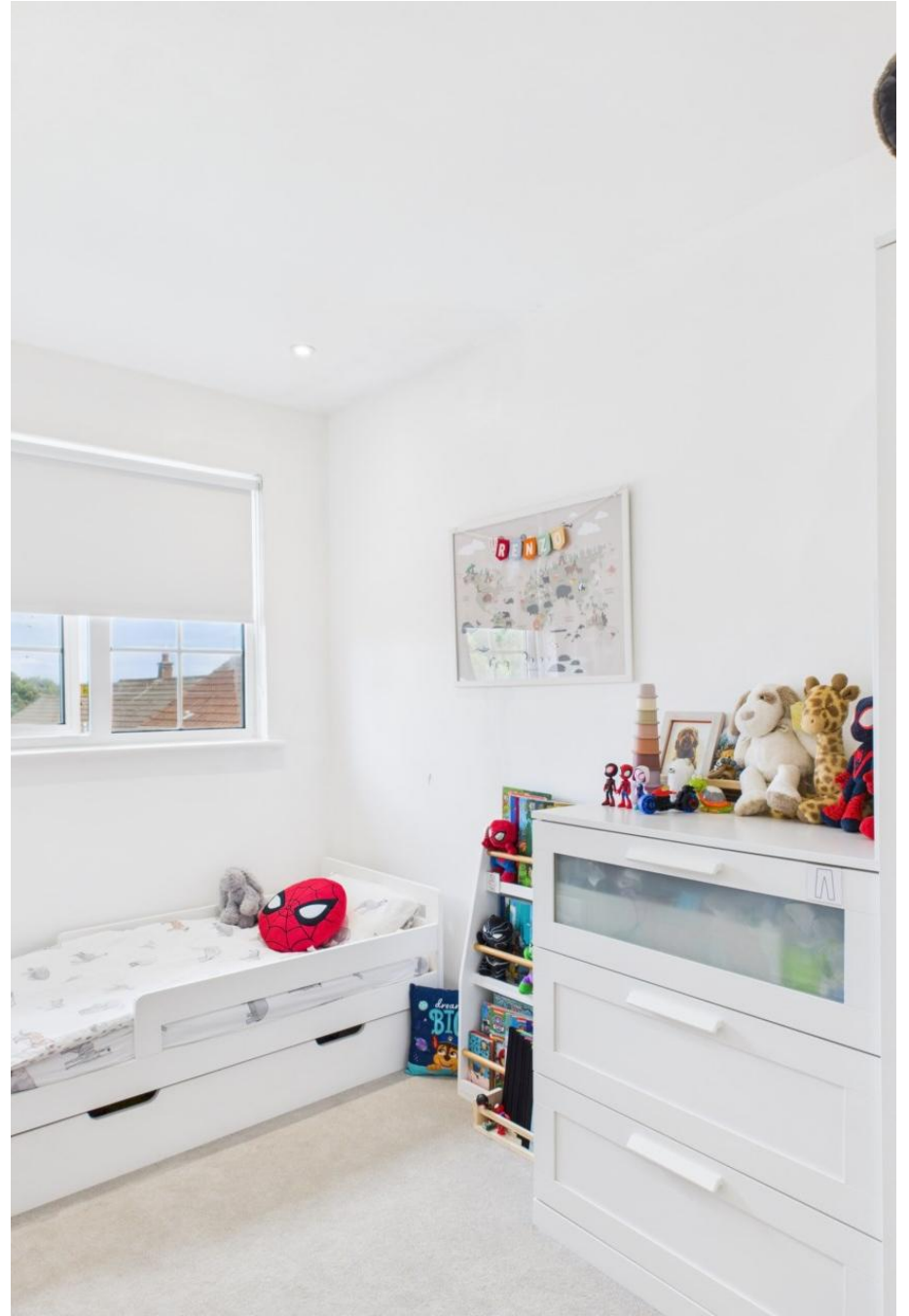
- Modernised three bed home
- Located close to major schools
- Two designated parking spaces
- Garage and utility
- Enclosed South facing garden
- Move in ready













STAIN REMOVAL

LAUNDRY ROOM

LAUNDRY

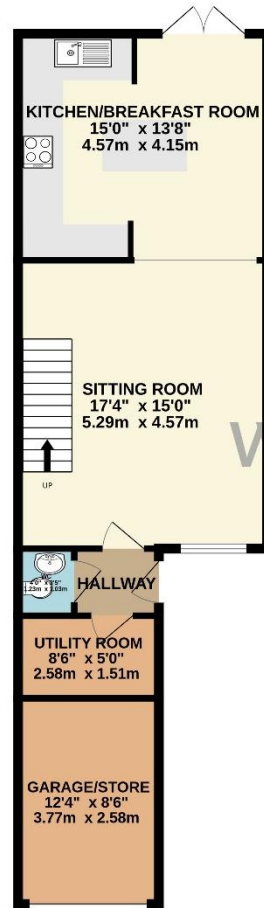
ICE KING
2 YEAR WARRANTY
FREE DELIVERY

ICE KING

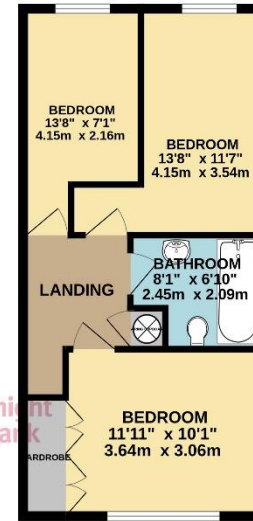
SAMSUNG



GROUND FLOOR
644 sq.ft. (59.8 sq.m.) approx.



1ST FLOOR
443 sq.ft. (41.1 sq.m.) approx.



WILSONS | Knight Frank

TOTAL FLOOR AREA: 1087 sq.ft. (101.0 sq.m.) approx.
 Whilst every attempt has been made to ensure the accuracy of the floorplan contained here, measurements of doors, windows, rooms and any other items are approximate and no responsibility is taken for any error, omission or mis-statement. This plan is for illustrative purposes only and should be used as such by any prospective purchaser. The services, systems and appliances shown have not been tested and no guarantee as to their operability or efficiency can be given.
 Made with Metropix ©2025

This plan is for layout guidance only. Not drawn to scale unless stated. Windows and door openings are approximate. Whilst every care is taken in the preparation of this plan, please check all dimensions, shapes and compass bearings before making any decisions reliant upon them.

Services

Electric heating

Mains water

Mains drains

+441534 877977

Knight Frank Jersey

37-39 Halkett Place, St. Helier, Jersey JE2 4WG

knightfrank.je

Your partners in property

1. Particulars: These particulars are not an offer or contract, nor part of one. You should not rely on statements given by Knight Frank Jersey in the particulars, by word of mouth or in writing (“information”) as being factually accurate about the property, its condition or its value. Neither Knight Frank Jersey nor any joint agent has any authority to make any representations about the property, and accordingly any information given is entirely without responsibility on the part of Knight Frank Jersey. 2. Material Information: Please note that the material information is provided to Knight Frank Jersey by third parties and is provided here as a guide only. While Knight Frank Jersey has taken steps to verify this information, we advise you to confirm the details of any such material information prior to any offer being submitted. If we are informed of changes to this information by the seller or another third party, we will use reasonable endeavours to update this as soon as practical. 3. Photos, Videos etc: The photographs, property videos and virtual viewings etc. show only certain parts of the property as they appeared at the time they were taken. Areas, measurements and distances given are approximate only. 4. Regulations etc: Any reference to alterations to, or use of, any part of the property does not mean that any necessary planning, building regulations or other consent has been obtained. A buyer must find out by inspection or in other ways that these matters have been properly dealt with and that all information is correct. 5. Fixtures and fittings: A list of the fitted carpets, curtains, light fittings and other items fixed to the property which are included in the sale (or may be available by separate negotiation) will be provided by the Seller’s Lawyer. Particulars dated 08/09/2025. All information is correct at the time of going to print.

