

- Well-presented two-bedroom unfurnished ground floor flat
- Freshly decorated throughout in modern, neutral décor
- Bright, contemporary interior with a stylish finish

Flat 0/2, 12 Glenkirk Drive, Glasgow, G15 6DH

£850 pcm

EVE Property are delighted to bring to the rental market this well-presented two-bedroom unfurnished ground floor flat, ideally situated in the popular residential area of Glenkirk Drive.



## Property Description

EVE Property are delighted to bring to the rental market this well-presented two-bedroom unfurnished ground floor flat, ideally situated in the popular residential area of Glenkirk Drive.

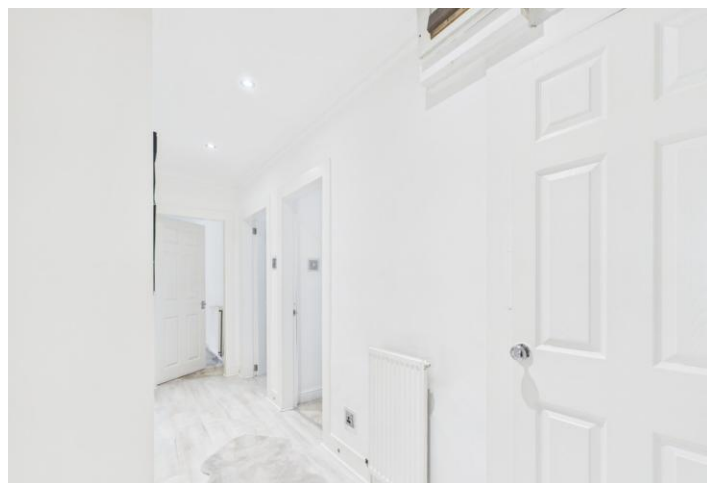
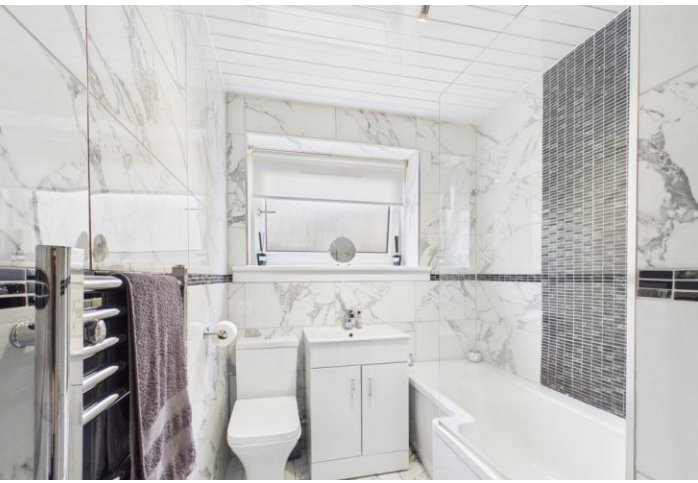
Freshly decorated throughout in modern neutral tones, the property offers bright and spacious accommodation with the added benefits of double glazing and gas central heating.

Accessed via a secure door entry system into a well-maintained communal hallway, the accommodation comprises a welcoming entrance hall, a spacious lounge, a modern fitted kitchen complete with appliances, two generously sized double bedrooms, and a contemporary family bathroom with a shower over the bath.

Glenkirk Drive enjoys a convenient location just off Drumchapel Road and Kinfauns Drive via Cloan Avenue. The property is well placed for a range of local amenities, schools, and transport links. Drumchapel Train Station is located just over half a mile away, providing regular services to Glasgow city centre and surrounding destinations. Excellent bus links are also available, with regular services on Glenkirk Drive and additional routes on Drumchapel Road and Kinfauns Drive.

This attractive home is ideal for professionals, couples, or small families seeking comfortable accommodation in a well-connected location.







%epcGraph\_c\_1\_334%

1 Herschell Street, Anniesland,  
Glasgow, Lanarkshire, G13 1HR

[www.eve-property.co.uk](http://www.eve-property.co.uk)  
0141 255 0020  
[hello@eve-property.co.uk](mailto:hello@eve-property.co.uk)

Agents Note: Whilst every care has been taken to prepare these particulars, they are for guidance purposes only. All measurements are approximate and for general guidance purposes only and whilst every care has been taken to ensure their accuracy, they should not be relied upon and potential buyers/tenants are advised to recheck the measurements.