

## Burrells Wharf Square, E14

### £325,000

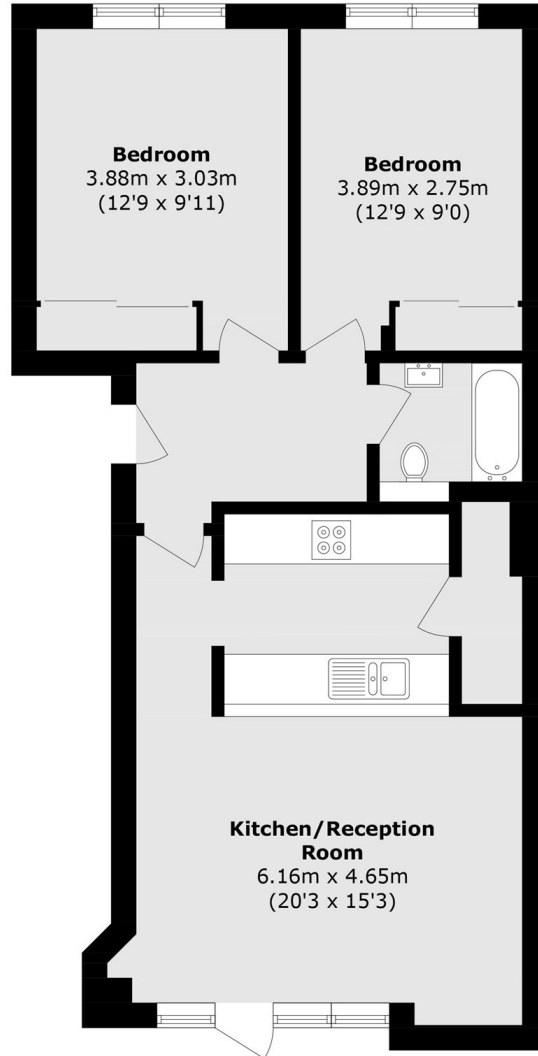
We are delighted to present this two-bedroom apartment to the market, set within the sought-after Burrells Wharf development. The property offers a spacious open-plan reception room, wooden flooring throughout, a concierge service and access to residents' leisure facilities.

Burrells Wharf is conveniently located just 0.1 miles from Mast House Terrace Pier, offering Uber Boat services providing scenic river access across London. Alternatively, Mudchute DLR station is approximately 0.5 miles away, offering swift connections to Canary Wharf, the City and beyond.

### Features

- Burrells Wharf Development
- Two Double Bedrooms
- Wooden Flooring Throughout
- Open Planned Reception
- Concierge Services
- Resident Facilities

# Burrells Wharf Square, London, E14



Total area (approx.): 59.8 sq. m (643.6 sq. ft)