



OFFERS OVER

£450,000

Denny Road

Dumbarton, G82 1JT

## PROPERTY SUMMARY

AN EXQUISITE FIVE BEDROOM DETACHED RESIDENCE SET WITHIN EXPANSIVE, SOUTH FACING ESTABLISHED GROUNDS. Arguably one of the finest homes ever offered within this highly exclusive Turnberry development. Gracefully situated within mature and expansive private garden grounds, this incomparable Detached Villa, crafted by the highly regarded Turnberry Homes, occupies one of the most desirable corner plots within the prestigious Castle Quay Development. A home of rare scale, refinement and presence, it offers a level of privacy, magnificent outdoor space and lifestyle versatility seldom found in a modern estate. The property blends contemporary luxury with thoughtful character and a warm, welcoming aesthetic. Every room is beautifully styled, every space impeccably maintained, and every detail reflects a home that has been cherished and elevated to an exceptional standard.

5



4



3



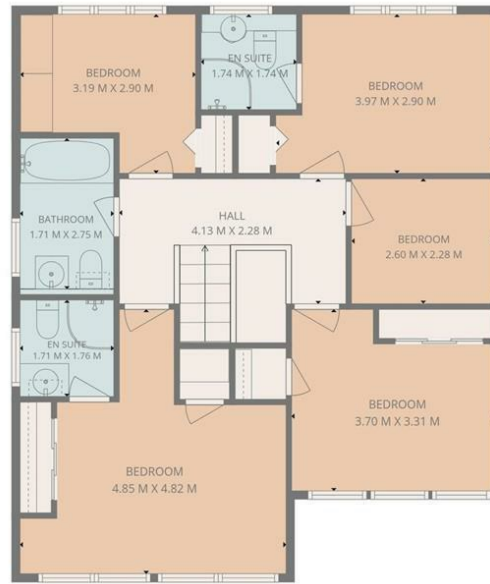








1ST FLOOR



2ND FLOOR

**TOTAL: 165 m2**

1st floor: 84 m2, 2nd floor: 81 m2

EXCLUDED AREAS: GARAGE: 16 m2, FIREPLACE: 0 m2, OPEN TO BELOW: 2 m2, WALLS: 14 m2

THIS PLAN IS FOR LAYOUT GUIDANCE ONLY AND SHOULD NOT BE RELIED UPON AS FACT



**HAXTON**  
PROPERTY

**OFFICE ADDRESS**

15 Station Road  
Dumbarton  
Dunbartonshire  
G82 1SA

**OFFICE DETAILS**

01389 719000  
info@haxtonproperty.co.uk  
www.haxtonproperty.co.uk

**LOCAL AUTHORITY**

West Dunbartonshire

**TENURE**

Freehold

**COUNCIL TAX BAND**

G

**VIEWINGS**

By prior appointment only

Energy Efficiency Rating		Current	Potential
Very energy efficient - lower running costs			
(92 plus) <b>A</b>			
(81-91) <b>B</b>			
(69-80) <b>C</b>		79	83
(55-68) <b>D</b>			
(39-54) <b>E</b>			
(21-38) <b>F</b>			
(1-20) <b>G</b>			
Not energy efficient - higher running costs			
<b>Scotland</b>		EU Directive 2002/91/EC	

Agents Note: Whilst every care has been taken to prepare these particulars, they are for guidance purposes only. All measurements are approximate and are for general guidance purposes only and whilst every care has been taken to ensure their accuracy, they should not be relied upon and potential buyers/tenants are advised to recheck the measurements

