



24 Epple Road,

Guide Price £350,000

DOMINIC MURPHY POWERED BY **exp** TM UK

@ dominic.murphy@exp.uk.com

🌐 dominicmurphy.exp.uk.com

☎ 01304 746 016

24 Epple Road,

LOCATION, LOCATION, LOCATION!

Situated in the ever-popular Epple Road with *no chain worries*, just moments from the beautiful Epple Bay, this spacious four-bedroom semi-detached home offers versatile accommodation arranged over three floors.

The ground floor features an entrance hall with useful storage, a downstairs WC, a comfortable front lounge complete with a built-in media wall, and an attractive extended fitted kitchen/diner - the perfect space for entertaining and an ideal family hub. There is also a handy utility room which is located in the former garage.

To the first floor, there is a master bedroom with en-suite shower room, two further bedrooms and a family bathroom. The second floor provides a fourth bedroom together with a generous walk-in wardrobe/dressing room.

Further benefits include off-street parking for two cars, gas-fired central heating, double glazing and a rear garden mainly laid to lawn.

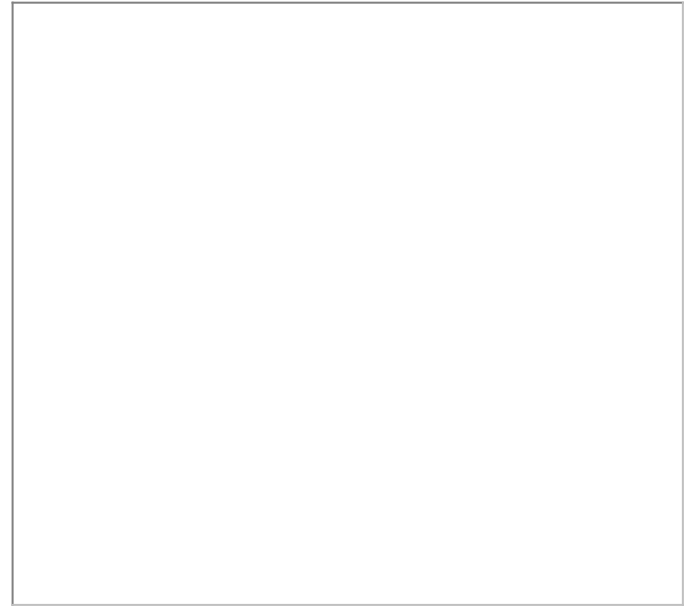
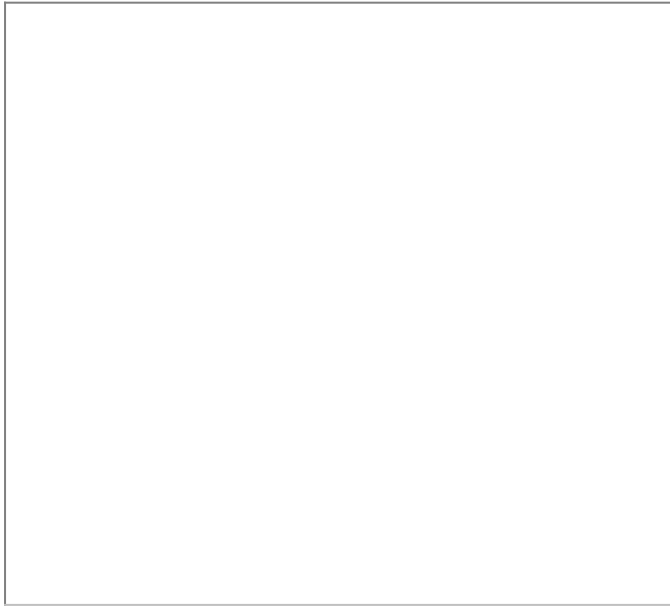
Perfectly positioned within easy reach of Epple Bay, Birchington Golf Course and local amenities, this is a fantastic coastal home in a highly sought-after location.



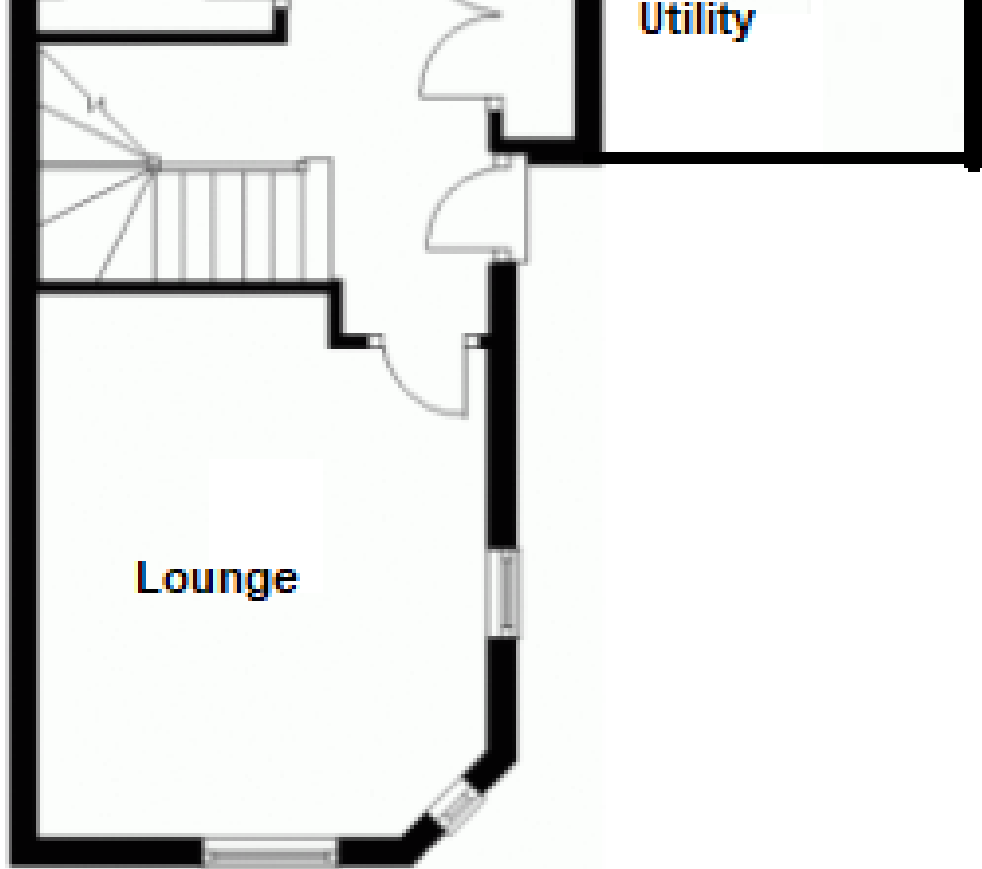




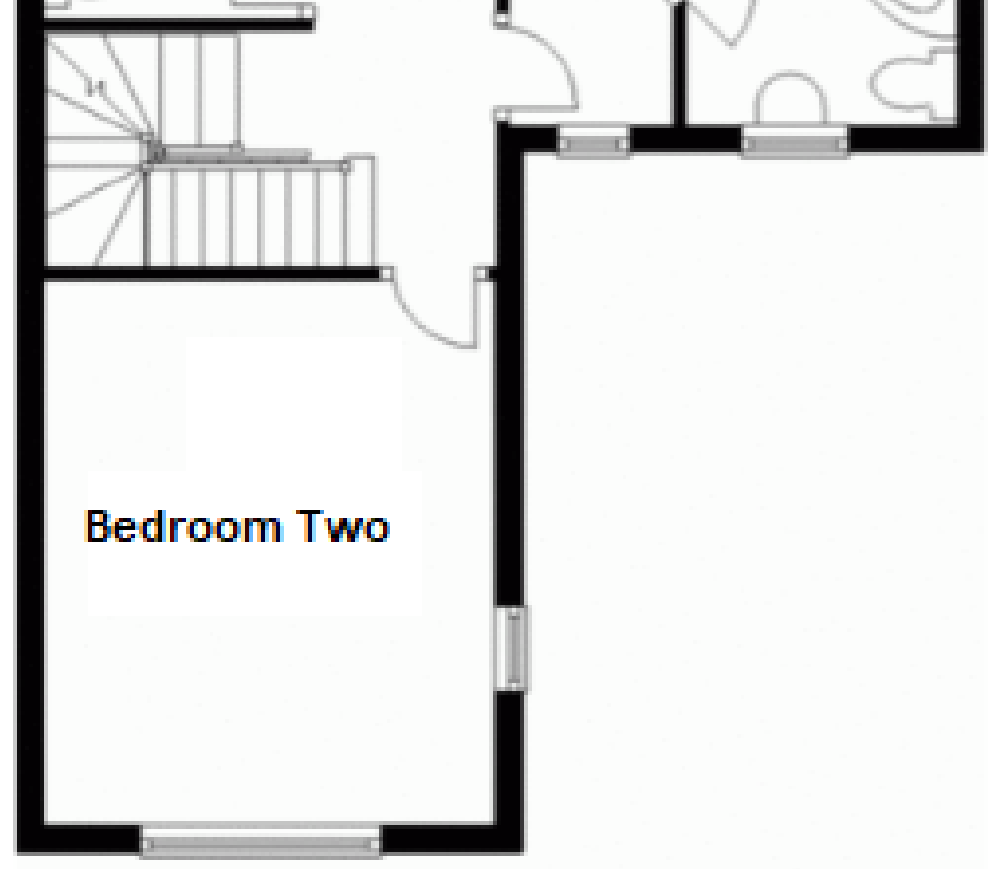




Utility



GROUND FLOOR



FIRST FLOOR

