



Apartment 4, The Yarrows

Church Hill | | Camberley | GU15 2HA

Price Guide £400,000 Leasehold - Share of Freehold



Apartment 4, The Yarrows

Church Hill |

Camberley | GU15 2HA

Price Guide £400,000

An attractive 3 bedroom first floor apartment set within a converted Victorian building with communal grounds, whilst benefitting from two allocated parking spaces and a garage. SHARE OF FREEHOLD

- 3 bedroom apartment
- Refitted kitchen
- Modern bathroom
- 16ft living room
- Two parking spaces
- Garage
- Communal garden
- Private setting

Accommodation

This attractive Victorian building was originally built in 1886 for Major General Mullins and was converted to six apartments in the 1950's. The main entrance hall gives access to four apartments and enjoys many original features, the stairs lead to the first floor and the front door of the apartment opens to a spacious entrance hall. The dual aspect living/dining room has high ceilings, a feature fireplace and a delightful bay window. The adjacent kitchen has a good range of shaker styled cabinets with a peninsular worksurface and a range of integrated appliances. The main bedroom has two sets of recently fitted floor to ceiling wardrobes and has views towards the communal gardens. The second bedroom is of equal proportions and has fitted wardrobes and views towards the communal gardens, the neighbouring 3rd bedroom or study, is served by a modern bathroom. The apartment has benefitted from several improvements including replacement sash windows and a replacement boiler. Residents have access to a basement for storage.

SHARE OF FREEHOLD
113 YEARS REMAINING
Ground rent: £0
Service charge £1610 p.a



Private setting

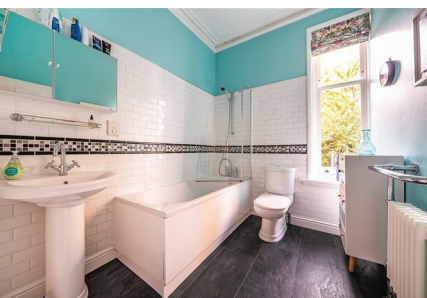


Location

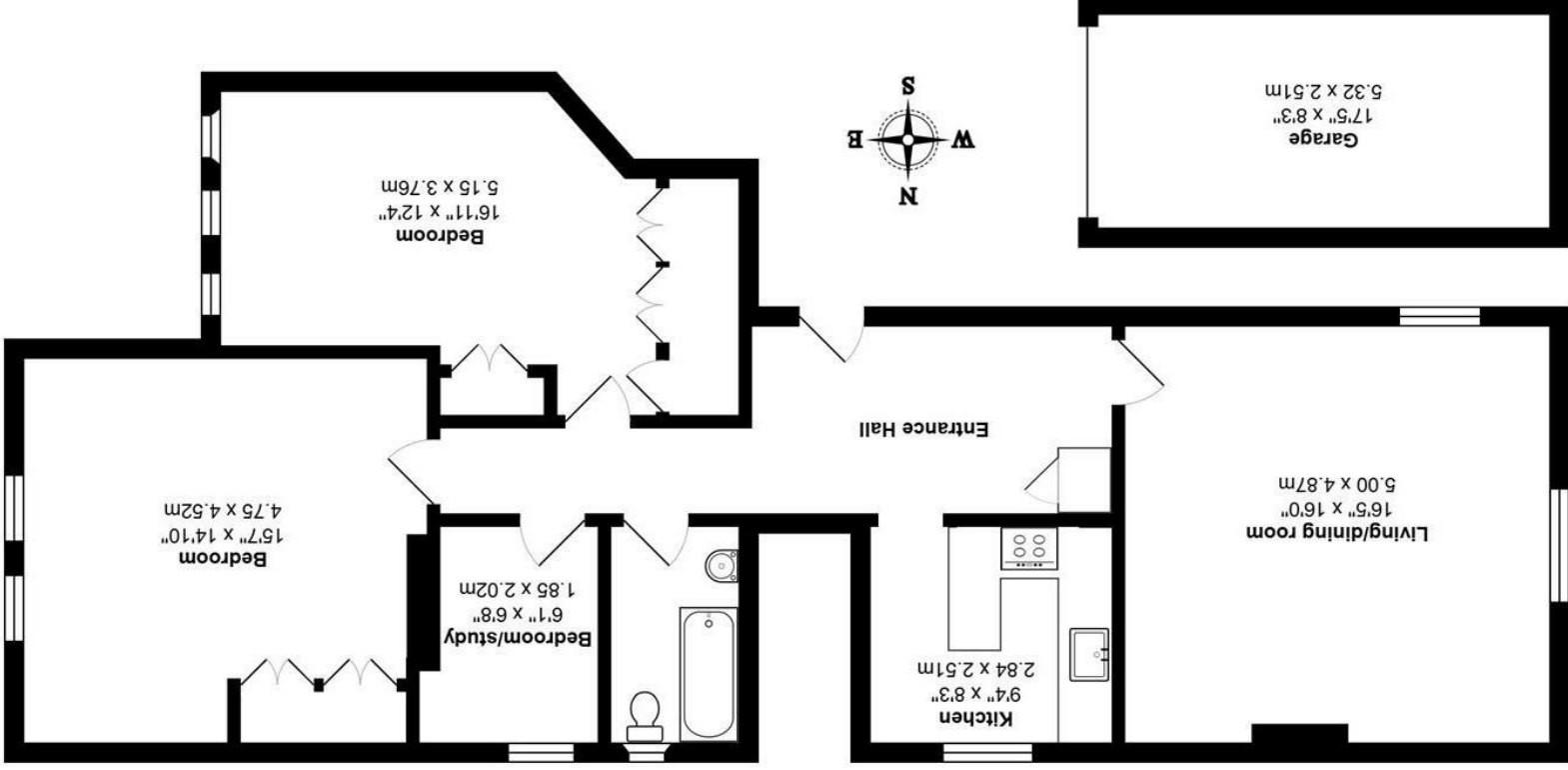
The property is set back from Church Hill along a private drive, but is conveniently located close to excellent local schools, including Prior Heath Infant School, Crawley Ridge Infant & Junior Schools, Ravenscote Junior School, and Collingwood Secondary School. Camberley is ideally situated 35 miles southwest of central London on the A30, with easy access to junctions 3 and 4 of the M3 motorway. Regular trains run from London to Camberley, with fast trains from Farnborough to Waterloo taking just 45 minutes. Camberley offers a variety of high street retailers, and The Atrium complex includes a nine-screen cinema, bowling alley, health & fitness club, cafés, and restaurants. Nearby, The Meadows features superstores including Marks and Spencer and Next. Additionally, Camberley Heath Golf Course, Camberley Cricket Club, and the Camberley Theatre provide excellent recreational facilities.

Outside

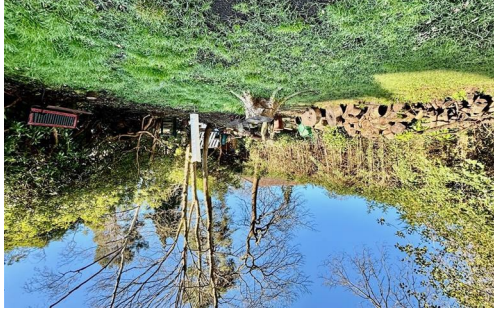
The apartments are approached by a private driveway, leading to the front courtyard with two allocated parking spaces and a garage. The communal gardens are to the side and rear, mainly lawned with a variety of shrub borders.



The Yarrows, 23, Church Hill, Camberley, GU15 2HA



Total Area: 1054 ft² ... 97.9 m² Excluding Garage
All measurements are approximate and for display purposes only



Energy Efficiency Rating	
Current	Target
72	66

Energy Efficiency Rating	
Very energy efficient - lower running costs	Very energy inefficient - higher running costs
A (92-100)	G (1-20)
B (81-91)	F (21-30)
C (69-80)	E (31-40)
D (55-68)	D (41-54)
E (39-54)	C (55-68)
F (21-30)	B (69-80)
G (1-20)	A (92-100)

27 High Street
Camberley
Surrey
GU15 3RB
01276 665666
camberley@waterfords.co.uk