



Glenister Park Road, London, SW16
London

Guide Price
£750,000

Bedrooms: 4 | Bathrooms: 3 | Receptions: 1

Ref: SW16 5DR | Price: £750,000

This truly amazing four-bedroom terraced family home, meticulously refurbished and extending to approximately 1,435 sq ft over three floors, offers a luxurious and contemporary living experience, perfect for those seeking sophisticated comfort and convenience.

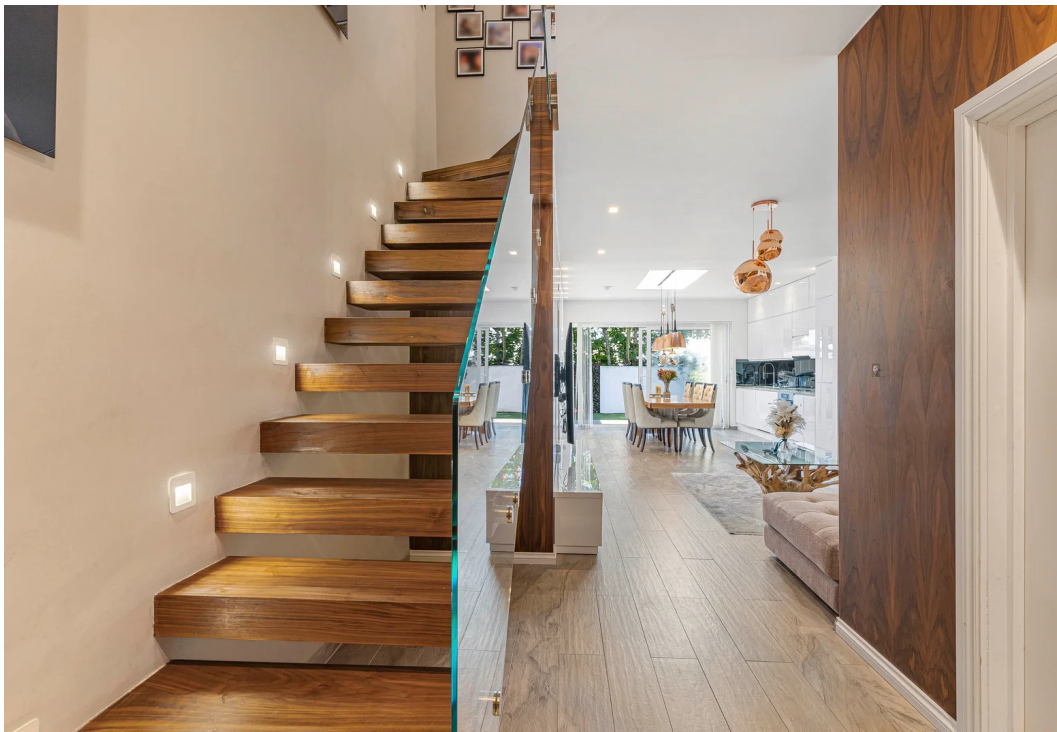
Step inside to discover a home where every detail has been thoughtfully considered. The inviting reception room leads seamlessly into a stunning open-plan kitchen and dining area, exceptionally designed for both everyday living and entertaining. This expansive space is bathed in natural light, creating an airy and sophisticated atmosphere. A feature floating staircase with a glass balustrade adds a touch of modern elegance, while a downstairs WC provides added convenience.

The property boasts four well-proportioned double bedrooms, each offering a private and tranquil retreat. Two of these bedrooms are complemented by luxurious en-suite shower rooms, providing an elevated sense of comfort. A beautifully appointed family bathroom serves the remaining bedrooms, ensuring ample facilities for a busy household.

Outside, a private rear garden offers a serene and verdant escape, ideal for tranquil relaxation, outdoor dining, and leisurely moments, serving as a perfect urban oasis.

Nestled in a peaceful residential enclave, this exceptional home is just a leisurely stroll from an array of charming local shops and restaurants. Excellent transport links are effortlessly accessible, with Streatham Common Station a short walk away, providing swift and convenient access into Central London and beyond.









Ani Alia

07468 513 301 / 020 3576 0535

ani.alia@exp.uk.com

<https://anialia.exp.uk.com>