



Guide Price
£290,000

Freehold

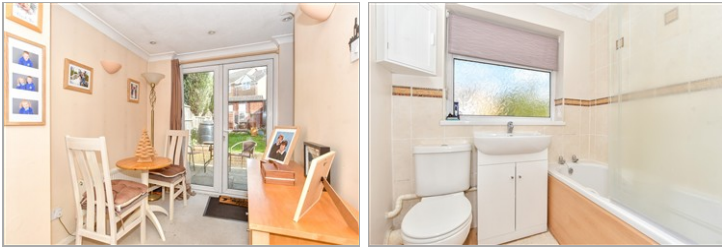
3x  1x  1x 

**Crofton Close,
Waterlooville,
Hampshire, PO7**

OVER 60?

Secure this property
for up to **59% less!**

cubitt & west
Helping you move forwards



Main features

- Spacious and extended home
- Neutral décor throughout
- Low maintenance sunny aspect rear garden
- Garage and driveway to the rear of property
- Fantastic location close to schools and amenities

Accommodation

GROUND FLOOR

- Entrance Hall
- Cloakroom
- Lounge/Diner: 23'0 x 13'8 (7.02m x 4.17m)
- Kitchen: 16'2 x 7'9 (4.93m x 2.36m)
- Breakfast Area: 6'10 x 6'7 (2.08m x 2.01m)

FIRST FLOOR

- Landing
- Bedroom 1: 11'3 x 8'6 (3.43m x 2.59m)
- Bedroom 2: 10'0 x 9'5 (3.05m x 2.87m)
- Bedroom 3: 8'5 x 7'11 (2.57m x 2.41m)
- Bathroom

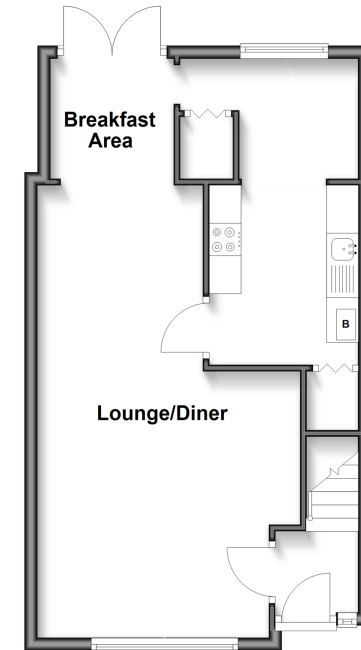
OUTSIDE

- Front and Rear Gardens
- Garage and Off Road Parking

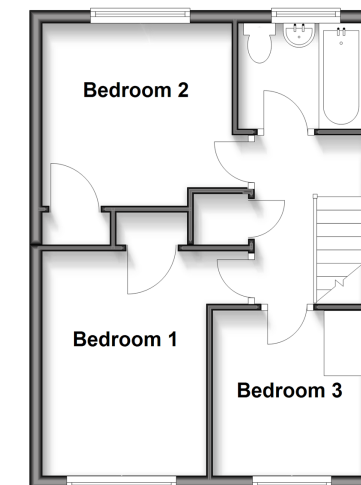
Call Waterloo - 02392 267244 ■ cubittandwest.co.uk

- Legal advice should be taken to verify fixtures/fittings, planning, alterations and/or lease details
- Appliances & services are untested, dimensions are approximate and floor plans are not to scale
- Through a Homewise Home For Life Plan people aged 60+ can secure this property for up to 50% less, by purchasing a Lifetime Lease.

Ground Floor
Approx. 44.5 sq. metres (479.2 sq. feet)



First Floor
Approx. 35.5 sq. metres (382.6 sq. feet)



42410733/20250930/EH/EC