



Great Portland Street, W1W

£975,000

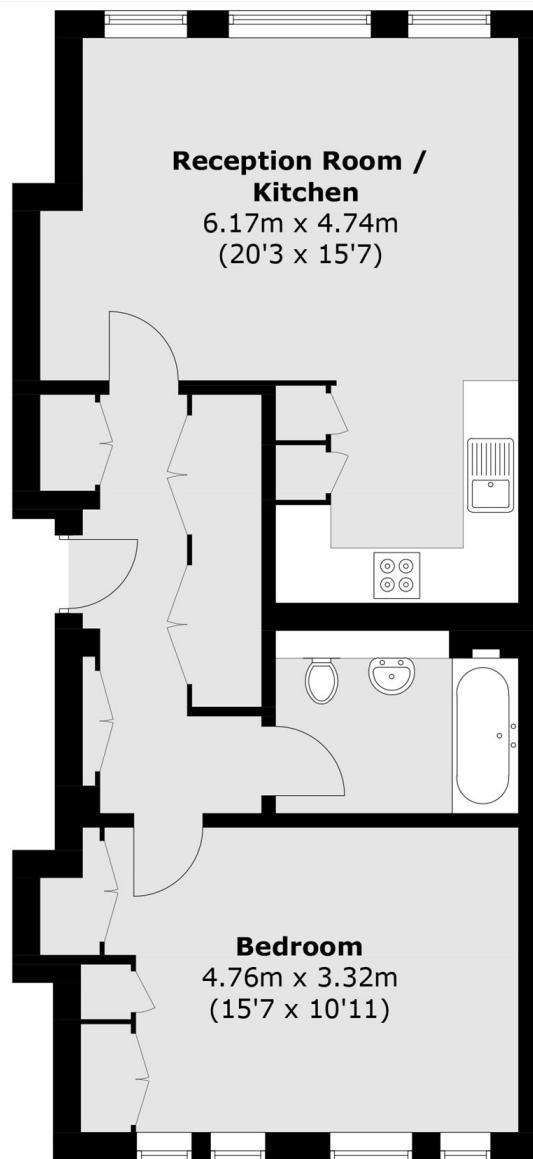
A bright dual aspect apartment on the third floor of a small modern building. Developed by Great Portland Estates with 2.65m high ceilings and AC behind a striking part modern, part period facade.

Located in Fitzrovia on the borders with Marylebone close to a host of world leading universities including UCL, KCL and LSE. Both Oxford & Regent Street, are located within a 5 minute walk allowing easy access to world-class shopping facilities, and transport links.

Features

- One Double Bedroom
- Third Floor
- Reception - Dining Room
- Passenger Lift
- Long Lease To 3016
- AC & Underfloor Heating

Great Portland Street, London, W1W



Third Floor

Total area (approx.): 58.4 sq. m (628.6 sq. ft)