



## Prince Of Wales Road, NW5

### £650,000

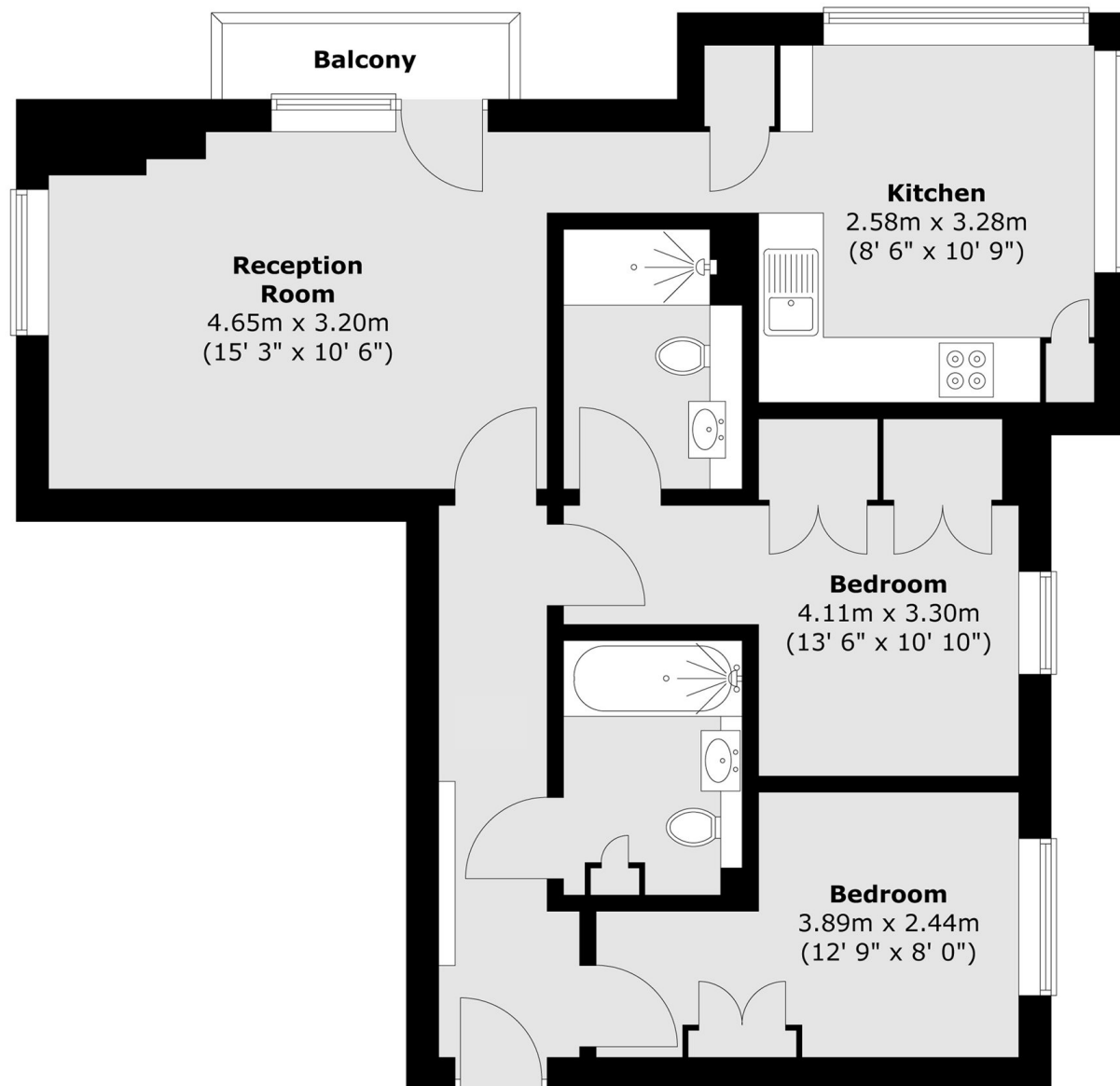
This two double bedroom, two bathroom apartment is in great condition throughout. The apartment has a large reception room, a separate kitchen, great views, and AC and underfloor heating throughout.

Located at the west end of Prince of Wales Road, the property is close to Primrose Hill and Belsize Park. It also has excellent transport links, with both Chalk Farm tube and Kentish Town West overground nearby.

### Features

- Two Double Bedrooms
- Two Bathrooms
- Chain Free
- Leasehold
- AC Throughout
- Underfloor Heating Throughout

# Prince Of Wales Road, London, NW5



Total area (approx.) : 59.6 sq. m (642 sq. ft)  
Total balcony area (approx.) : 1.8 sq. m (19 sq. ft)