

# clever



## Flat 4 17 Woodland Terrace, , Plymouth, PL4 8NL

**£151**



This charming two-bedroom apartment is perfectly located near the University of Plymouth and local amenities, making it an ideal spot for students or professionals alike.

As you step inside, you'll be greeted by a spacious open plan living room and kitchen, providing a comfortable and modern living space. The property boasts one bathroom, ensuring convenience for all residents.

One of the perks of this apartment is the first-come, first-served parking, making it easy for you and your guests to find parking right on Greenbank Road by Aldi.

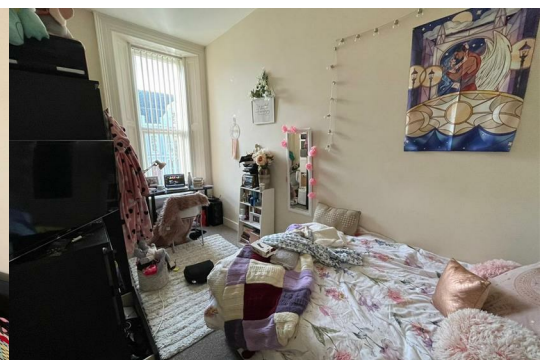
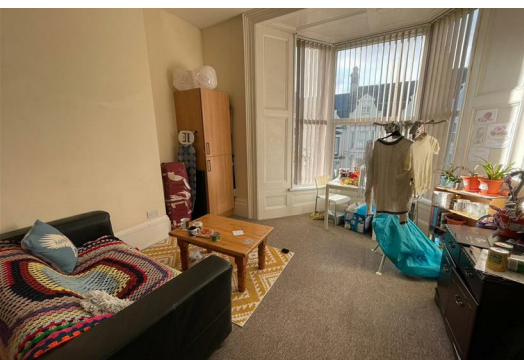
Don't miss out on the opportunity to make this apartment your new home. With its convenient location and cozy interior, this property has all the makings of a wonderful place to live.

£147 per week per room based on 44 week tenancy

Student property- Available 1st September

Gas, electric water and WIFI included! (fair usage policy applies)

Council tax band A



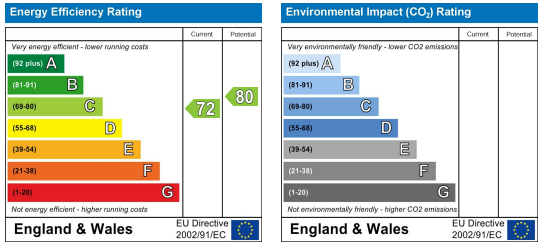
### Area Map



### Floor Plans



### Energy Efficiency Graph



These particulars, whilst believed to be accurate are set out as a general outline only for guidance and do not constitute any part of an offer or contract. Intending purchasers should not rely on them as statements of representation of fact, but must satisfy themselves by inspection or otherwise as to their accuracy. No person in this firm's employment has the authority to make or give any representation or warranty in respect of the property.