



Haydons Road, SW19

£450,000

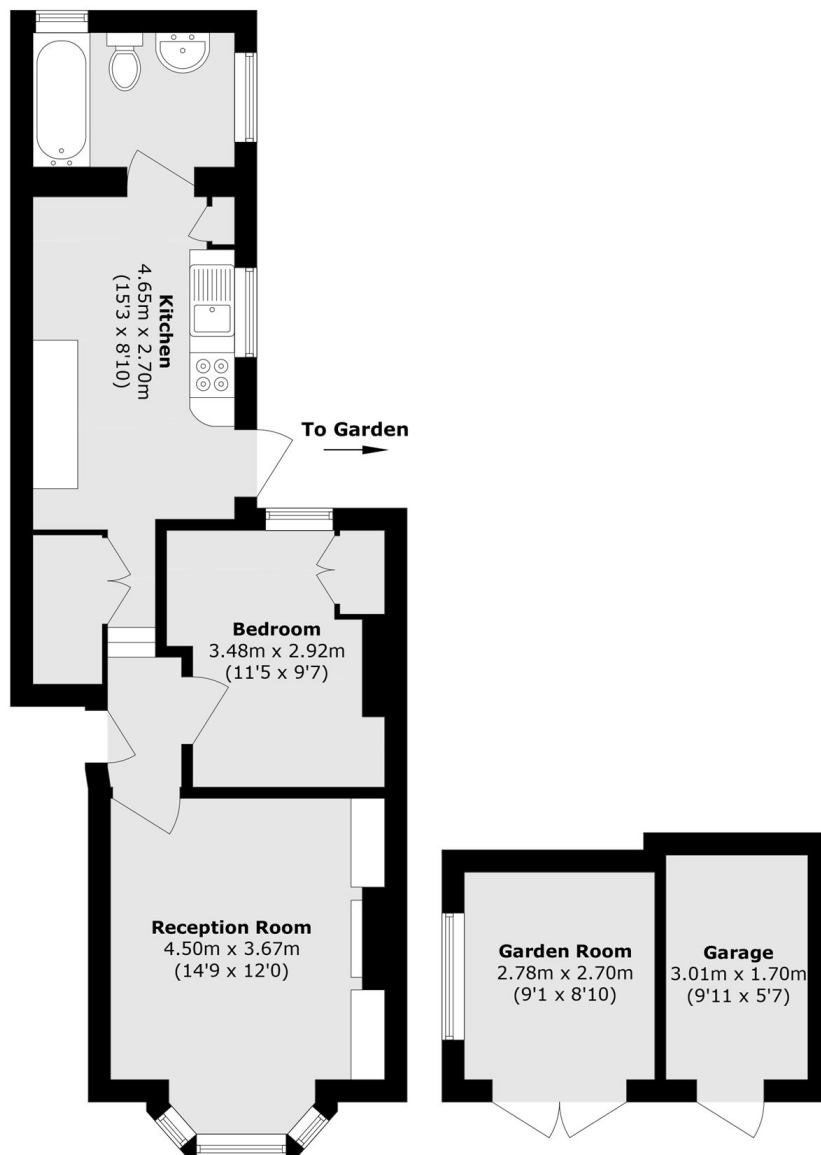
A large one double bedroom, ground floor flat. The property has a large private rear garden, landscaped to a beautiful standard, with a home garden office and a striking front reception room.

Haydons Road is just within a short walk of both South Wimbledon Northern line tube and Wimbledon District line tube. Wimbledon Broadway is close by with a vast array of shops, bars and restaurants.

Features

- Garden Flat
- Large Private Garden
- Garden Home Office
- Over 520 Square Feet
- Victorian Conversion
- No Service Charge

Haydons Road, London, SW19



Ground Floor

Outsourcing

Total area (approx.): 48.4 sq. m (520.9 sq. ft)
Outbuilding area (approx.): 13.2 sq. m (142 sq. ft)