




Church Road, Fleet, GU51 4ND

£290,000

 2  1  1

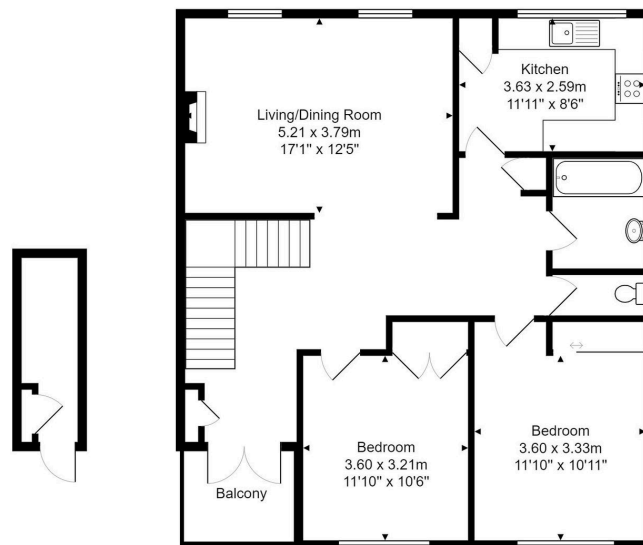


Located in Fleet town centre is this spacious two double bedroom first floor flat with balcony, parking, presented in excellent order and offered with no onward chain complications.

## Key Features

- Fleet Town Centre
- Over 900 Year Lease
- Large Living Dining Room
- Bathroom & Seprate WC
- Allocated Parking
- First Floor
- Two Double Bedrooms
- Fitted Kitchen
- Balcony
- No Onward Chain

Flat 8, Church Court, Church Road, Fleet, GU51 4ND



Total Area: 90.8 m<sup>2</sup> ... 978 ft<sup>2</sup> (excluding balcony)  
All measurements are approximate and for display purposes only