



Flowers Avenue, Ruislip - HA4 8GH

Guide Price £660,000 | Freehold



LAWRENCE RAND



Key Features & Description

- FOUR BEDROOM TOWNHOUSE
- SPACIOUS RECEPTION ON FIRST FLOOR
- ARRANGED OVER THREE FLOORS
- LARGE EAT IN KITCHEN LEADING TO CONSERVATORY
- THREE BATHROOMS
- GROUND FLOOR WC
- OFF STREET PARKING & GARAGE

Located in a sought-after area, this beautifully presented four-bedroom terraced home is set over three spacious floors, offering modern and versatile living for families.

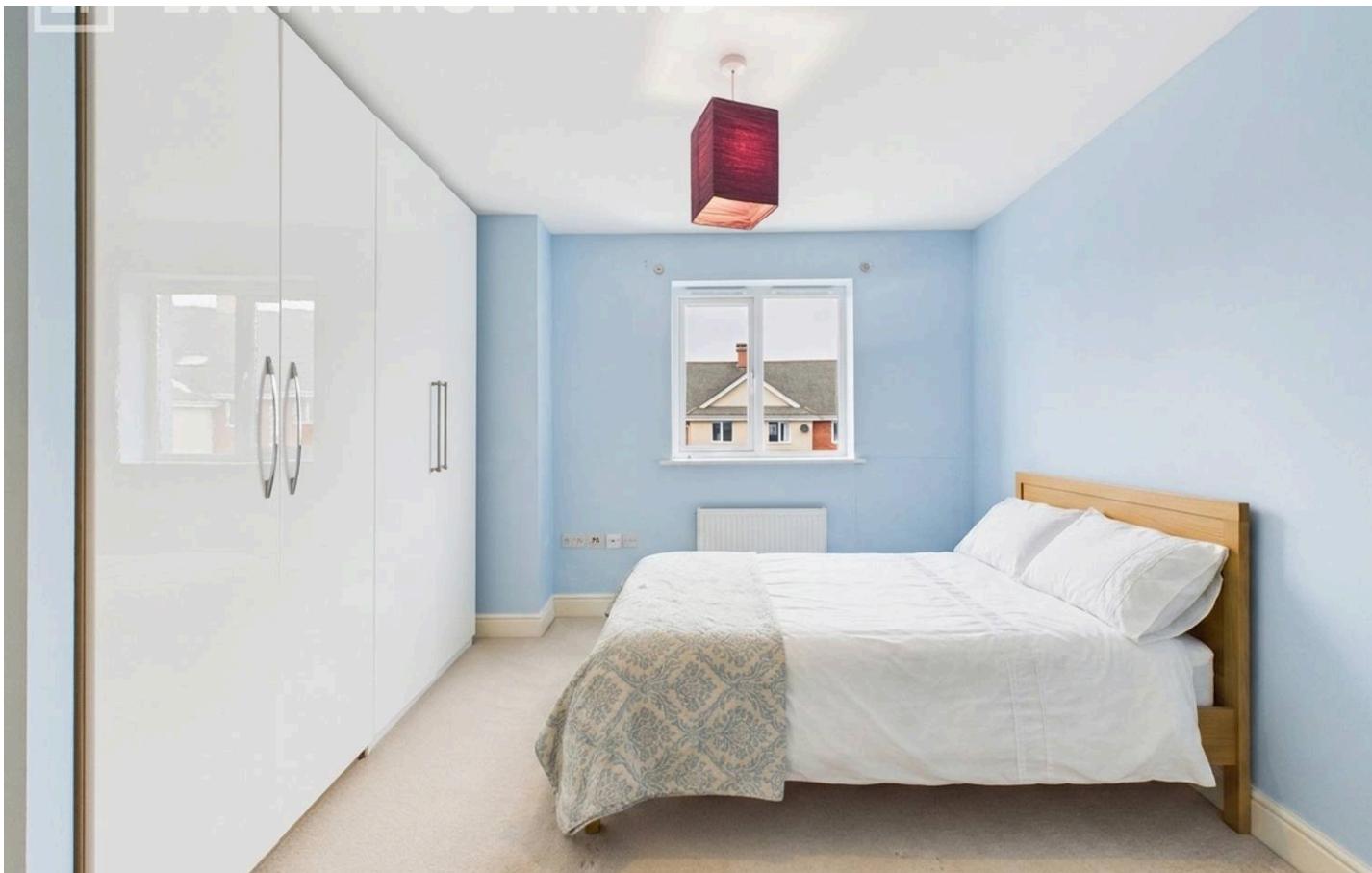
The ground floor features a bright hallway with guest WC, storage, tiled flooring and access to the integral garage. A contemporary kitchen opens into a light-filled conservatory with doors to the private rear garden.

On the first floor is a spacious reception room with balcony, a modern shower room and a double bedroom. The top floor includes a principal bedroom with ensuite, a further double bedroom with fitted wardrobes and ensuite shower room, plus a fourth bedroom ideal as a nursery, study or home office.

Situated on Flowers Avenue, the property is within walking distance of Ruislip High Street, transport links via the Metropolitan and Piccadilly lines, local parks and well-regarded schools including Bishop Ramsey School.

Presented with care by Lawrence Rand – helping you find the place you'll love to call home.





Nearest Station

- Eastcote – approx 0.6 miles
- Ruislip Manor – approx 0.7 miles
- Ruislip – approx 1 mile

Verified Material Information:

Council Tax band: F

EPC Energy Efficiency Rating: C

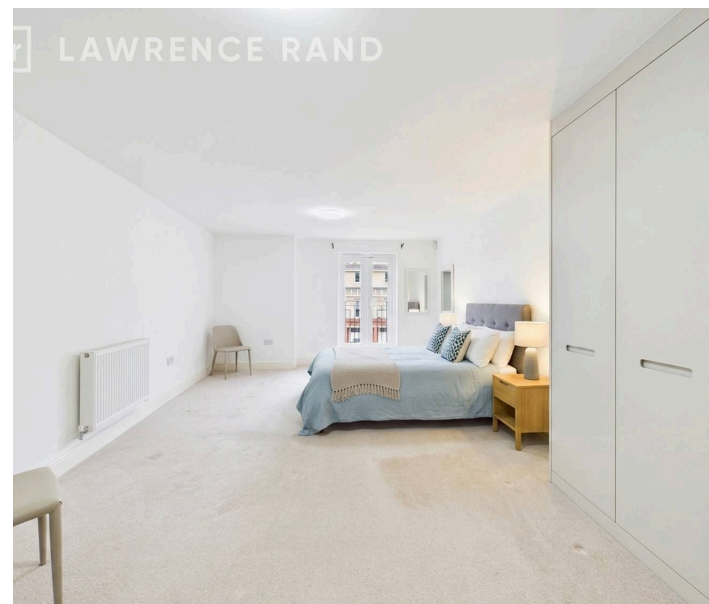
Suppliers:

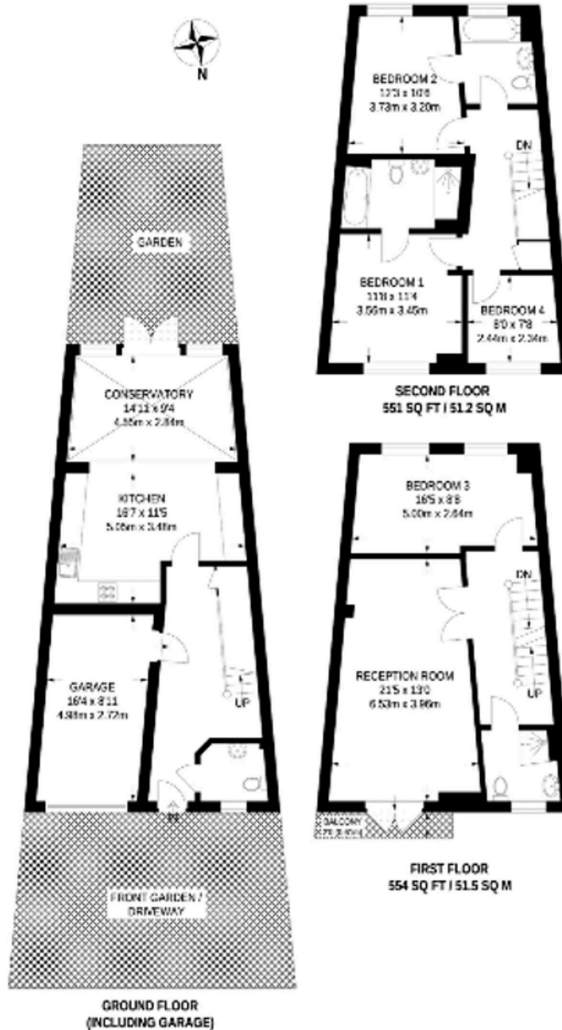
- Electricity supply: Mains,
- Water supply: Mains water,
- Sewerage: Mains
- Heating: Gas central heating

Broadband & mobile coverage:

Broadband: FTTP (Fibre to the Premises)

Mobile coverage: O2 - Excellent, Vodafone - Excellent, Three - Excellent, EE - Excellent





Lawrence Rand

51 Victoria Road, Ruislip - HA4 9BH

01895 632211

sales@lawrence-rand.co.uk

www.lawrence-rand.co.uk/

Lawrence Rand Limited has made every reasonable effort to ensure the accuracy of the information provided. However, we accept no responsibility for errors, omissions, or misstatements. All measurements, distances, and descriptions are approximate and for guidance only. Prospective purchasers or tenants must verify all details independently. Some images may include AI-generated virtual staging to illustrate the potential of the property and are for visual guidance only. No warranty is given or implied, and these particulars do not form part of any offer or contract. Lawrence Rand reserves the right to amend or withdraw any property without notice.