

MANOR

|| DASHWOOD RISE
BICESTER | OX25 6JQ



A detached bungalow situated within the favourable village of Duns Tew, Oxfordshire. Offering ample living space and privacy throughout. Benefitting from a fully enclosed plot, gated private driveway and a larger than standard garage.

The accommodation comprises of an entrance hall, two reception rooms, a fitted kitchen with dining area, three well proportioned bedrooms, and a sizeable bathroom.

To the rear, open countryside views along with mature grounds. A rural yet private back backdrop compliments the spacious gardens.







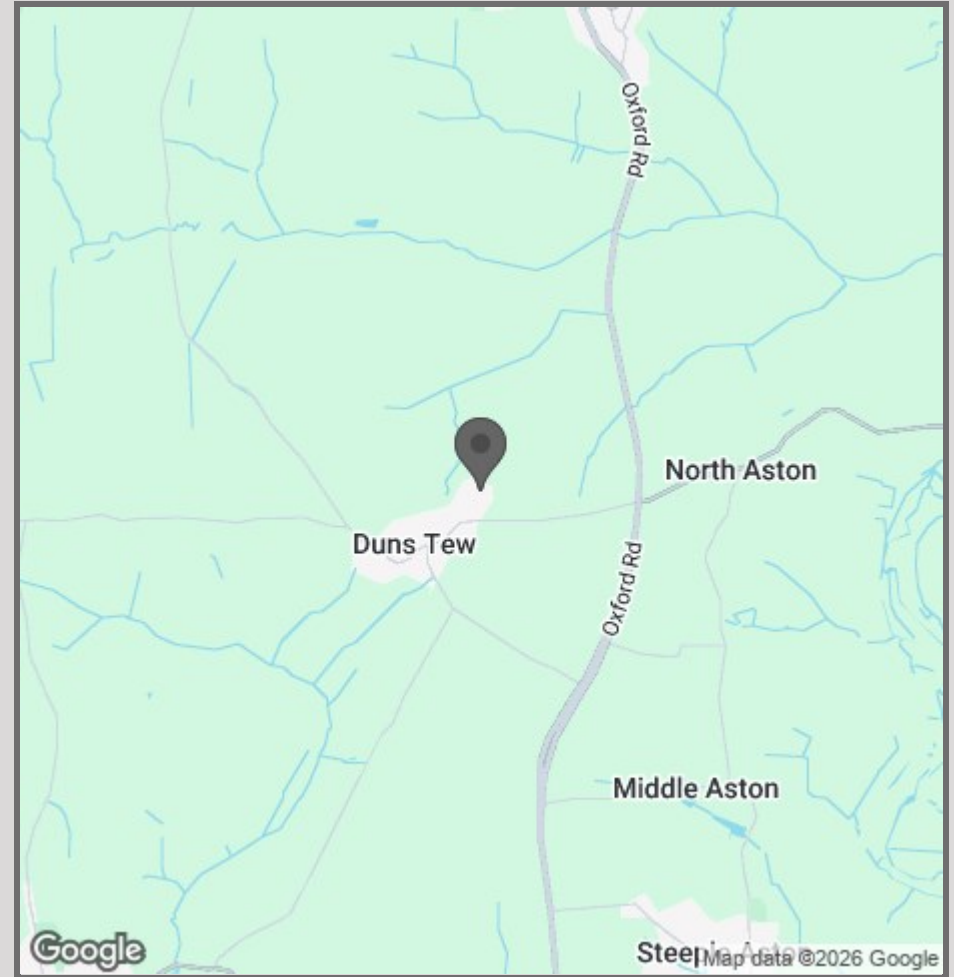
Subject to the necessary planning consents, there is potential to extend or convert the property further, creating additional reception space or en suite bedrooms.

The village is home to The White Horse Inn, a welcoming local pub, as well as a village hall which serves as a space for local events and activities. St Mary Magdalene parish church adds to the village's charm, with the village centre designated an area of special architectural and historic interest.





- Detached
- Sizeable Plot
- Gated Driveway
- Garage
- Ample Reception Space
- Fitted Kitchen
- Countryside Views
- Landscaped Private Gardens



42 High Street
Woodstock
OX20 1TG

01865 955500

hello@manoroxford.com

www.manoroxford.com

MANOR

11 Dashwood Rise

Approximate Gross Internal Area = 95.1 sq m / 1024 sq ft

Garage = 18.2 sq m / 196 sq ft

Total = 113.3 sq m / 1220 sq ft

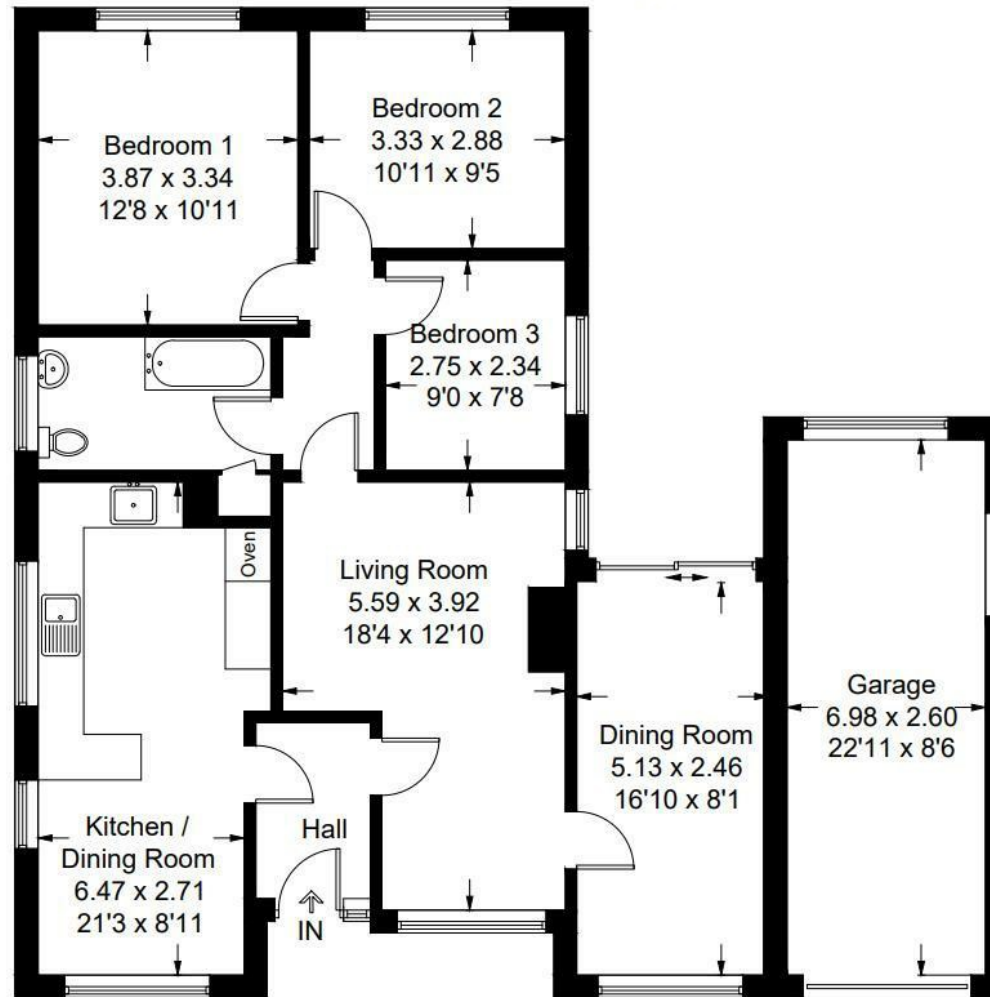


Illustration for identification purposes only, measurements are approximate, not to scale. Fourlabs.co © (ID1310849)

MANOR